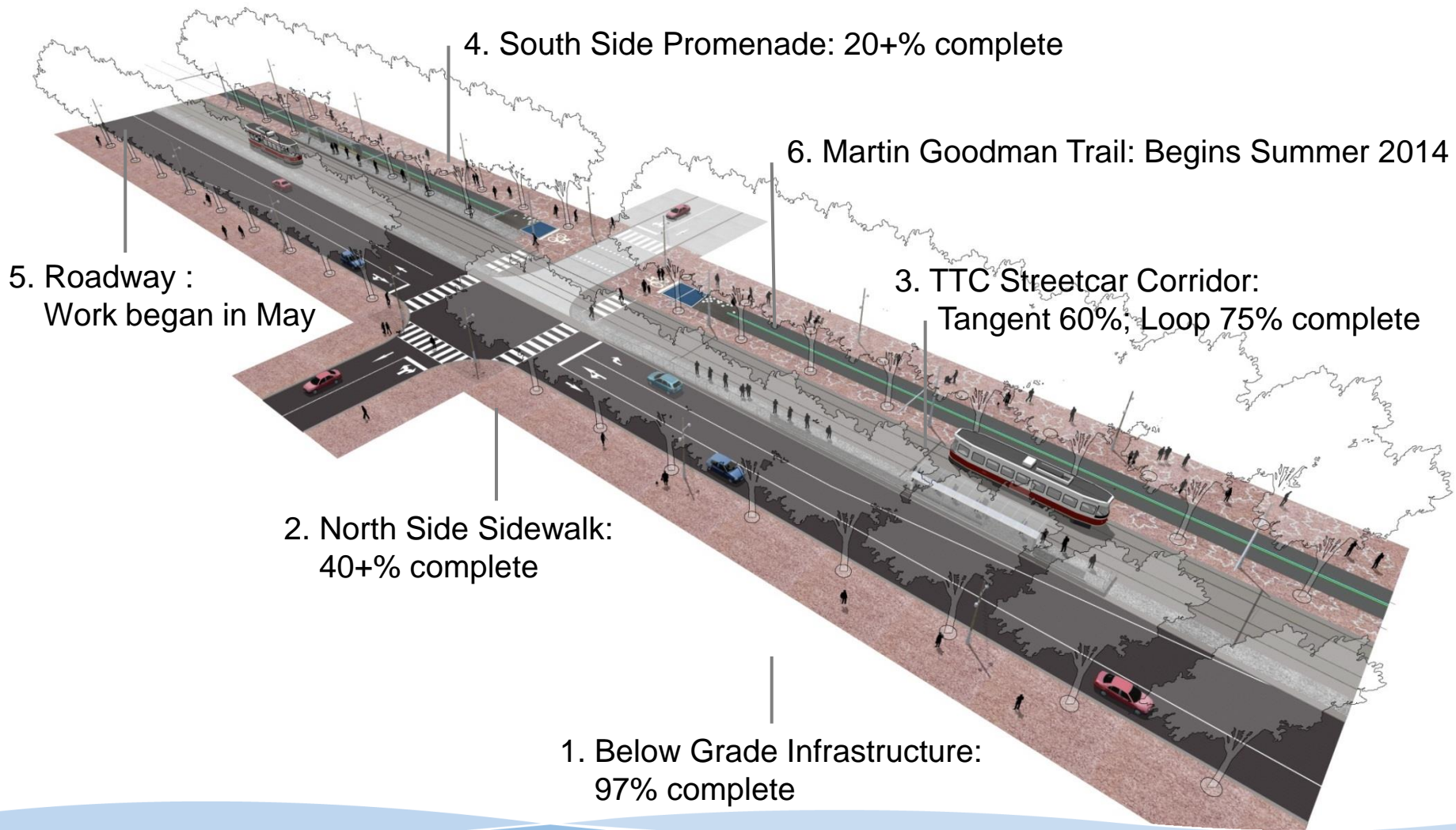


Tour Stop	Location	Discussion
# 1	Northside: York Ramp Parkette	Overview of Major Construction Tasks/ Sequence
# 2	Northside: York/Starbucks Plaza	North side sidewalks
# 3	Northside: Lower Simcoe	Intersection closures/TTC tangent + roadway
# 4	Northside: Rees Parking Lot	Deep services; tree planting
# 5	Southside: Spadina WaveDeck	Spadina Loop
# 6	Southside: HTO East	Water's Edge Promenade
# 7	Southside: Harbourfront Centre	Water's Edge Promenade/ Martin Goodman Trail
# 8	Southside: Bay/Queens Quay	Service roadway at 33 Harbour Square



What We're Building: Construction Sequence

PARTIAL INTERSECTION CLOSURES

- Installing tracks across intersections is the most complicated part of the rebuild
- We are maintaining westbound traffic but must limit north/south movements to and from Queens Quay at these intersections
 - A north/south pedestrian crossing is maintained
- Lower Spadina / Lower Simcoe intersections
 - Lower Spadina reopened on May 27
 - Lower Simcoe to reopen June 2
- York Street / Rees Street
 - York Street: June 2; followed by Rees mid-week
 - Appx 3 weeks



PARTIAL INTERSECTION CLOSURES: York and Rees