

January 2023

Construction Notice #40: Port Lands Flood Protection & Lake Shore Boulevard East Projects



Construction Manager

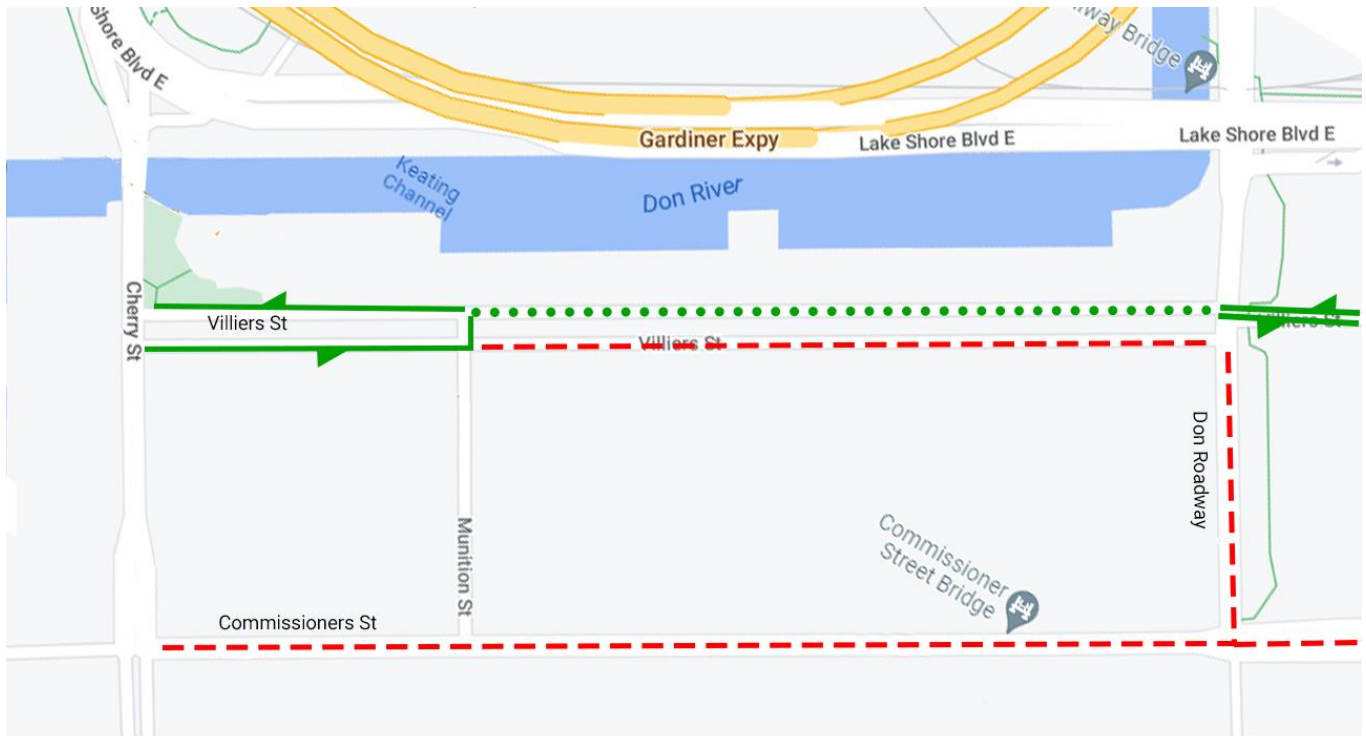


Past construction notices, as well as information about all ongoing construction can be found on the [construction page on the project website \(https://portlandsto.ca/construction/\)](https://portlandsto.ca/construction/).

Traffic Update

Lane Shifts on Villiers Street between Muniton Street and Don Roadway: January 30 – mid February

The eastbound lanes on the south side of Villiers Street will be closed to facilitate utilities work in early February. Eastbound and westbound traffic will be maintained using the westbound lane. Traffic will move in one direction at a time, controlled by flaggers. Cyclists and pedestrians will be shifted to the north side of Villiers Street between Cherry Street and Don Roadway. Access to local businesses will remain open during construction.



Vehicles

- Eastbound traffic will cross at Muniton Street to travel in the westbound lane until Don Roadway
- Westbound traffic will remain in the existing westbound lane

- Traffic on Villiers Street between Munition Street and Don Roadway will alternate direction, controlled by flaggers.

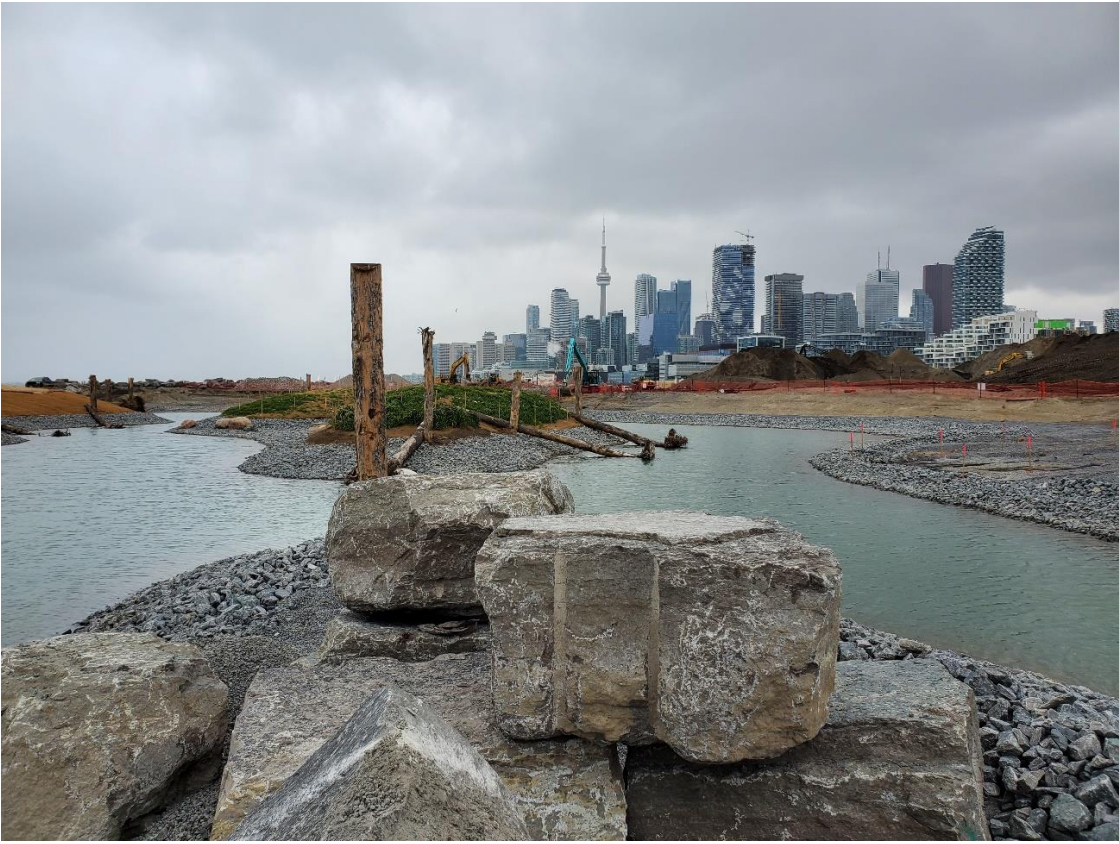
Pedestrians and Cyclists:

- The cycle track on the south side of Villiers Street will be closed between Munition Street and Don Roadway.
- The cycle track between Cherry Street and Munition Street will remain open for local traffic accessing businesses at Villiers Street and Munition Street.
- Cyclists will be directed to use the westbound cycle track on the north side of Villiers Street, which will function as a bi-directional track. At Don Roadway, they can cross back to the south side of Villiers Street.
- The sidewalk on the south side of Villiers Street will be open to local traffic between Cherry Street and Munition Street. It will be closed between Munition Street and Don Roadway.
- Pedestrians are encouraged to use the sidewalk on the north side of Villiers unless accessing local businesses at Villiers Street and Munition Street.

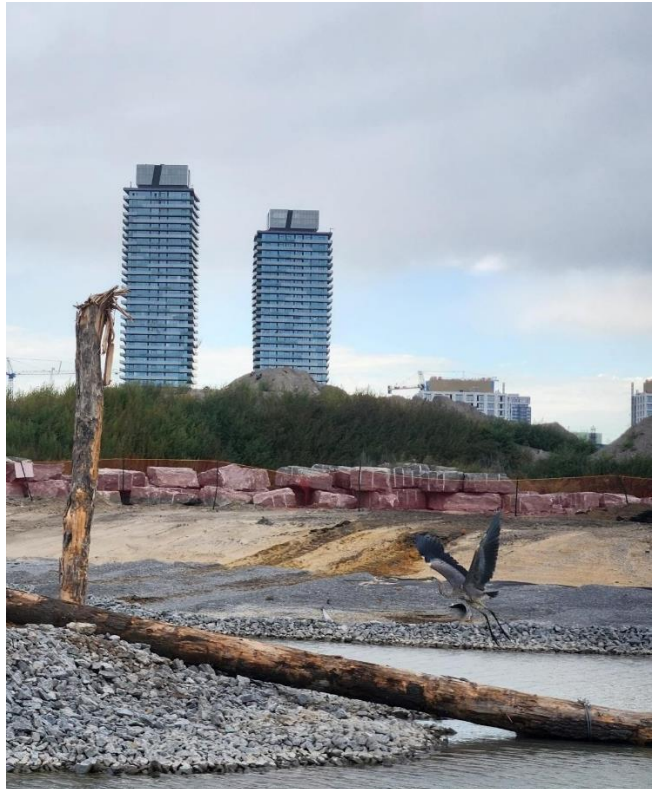
Other Traffic Impacts

- Starting Monday, January 30-mid February: Enbridge Gas is working on Lake Shore Boulevard between Parliament Street and Sherbourne Street resulting in periodic reductions to a single lane for one direction at a time. This work is unrelated to the Port Lands Flood Protection and Lake Shore Boulevard East projects. For more information visit [Enbridge's Website:](https://www.enbridgegas.com/about-enbridge-gas/projects/cherry-to-bathurst)
<https://www.enbridgegas.com/about-enbridge-gas/projects/cherry-to-bathurst>

Construction Update



Above: The islands in Canoe Cove are nearing completion.



Above: A mink and a heron visited canoe cove in January.



Above: The Ice Management Area, where the Don River will meet the new river valley is lined with armour stone.



Above: The Commissioners Street Bridge has a deck. The next step is waterproofing and then installing the road base.



Above: The wall of steel sheet-piles shows where the river will be widened in the Sediment and Debris Management Area. Everything left of the wall will be excavated and become part of the river or a sloped riverbank.

Questions?

To learn more about this project, please visit the [Port Lands Flood Protection project website \(https://portlandsto.ca/\)](https://portlandsto.ca/).

To send us questions or concerns about construction, use this [online inquiry form \(https://portlandsto.ca/contact-us/\)](https://portlandsto.ca/contact-us/).

You can also email us at plfp@ellisdon.com.

For urgent construction related issues, please contact Cameron Coleman, EllisDon, at 416-594-2198.

Waterfront Toronto

20 Bay Street, Suite 1310, Toronto, Ontario M5J 2N8

T. 416-214-1344 | waterfronttoronto.ca | info@waterfronttoronto.ca

