



DELFT Modelling Results

February 2016



Member of Conservation Ontario



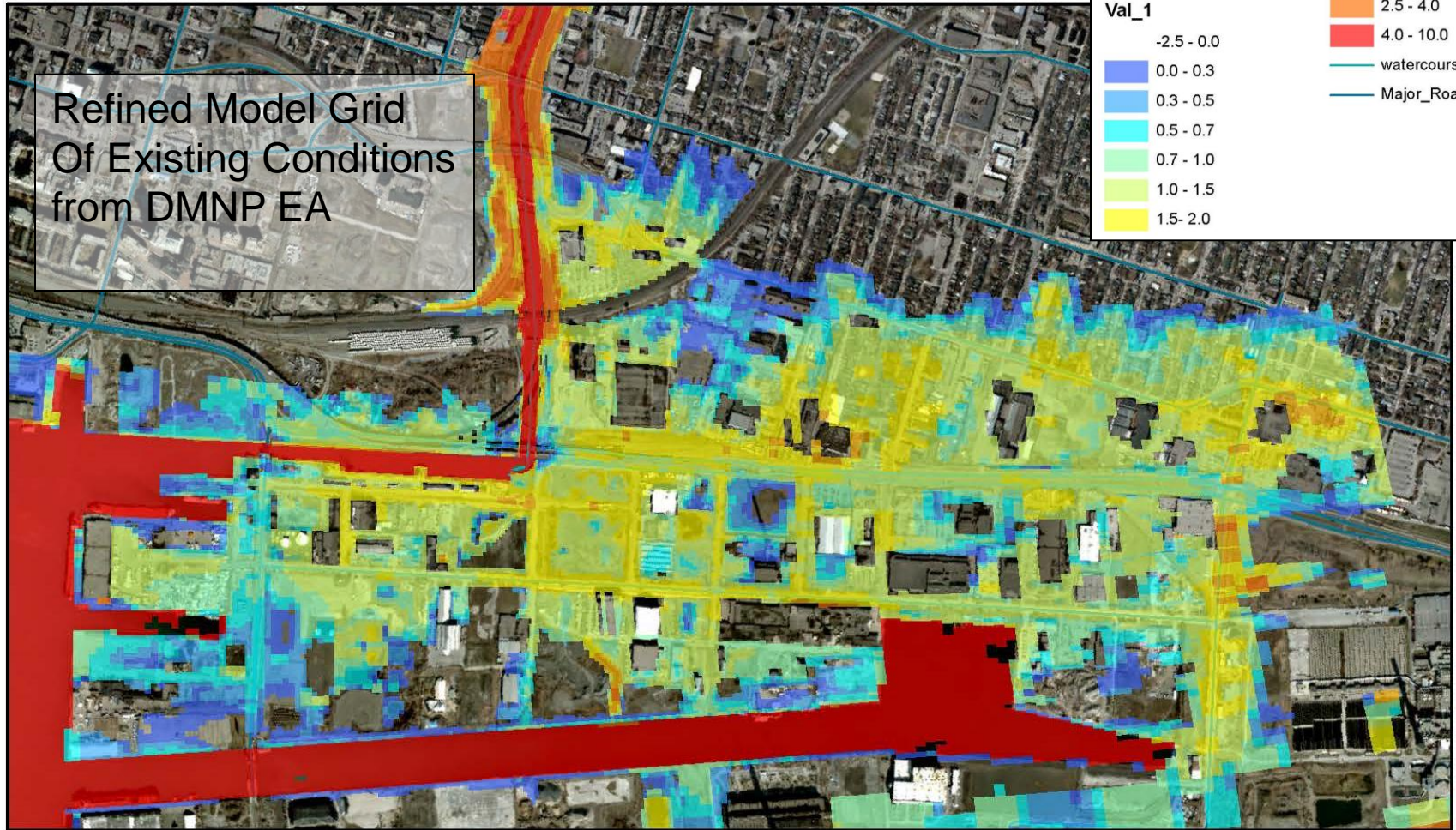
Content

Construction Sequencing

- Depth – Existing
- Depth – Construction Phasing 1
- Depth – Construction Phasing 2
- Depth – Construction Phasing 3
- Depth – Construction Phasing 3 & First Gulf VWF
- Depth – Phase 4 minus First Gulf VWF
- Full Implementation

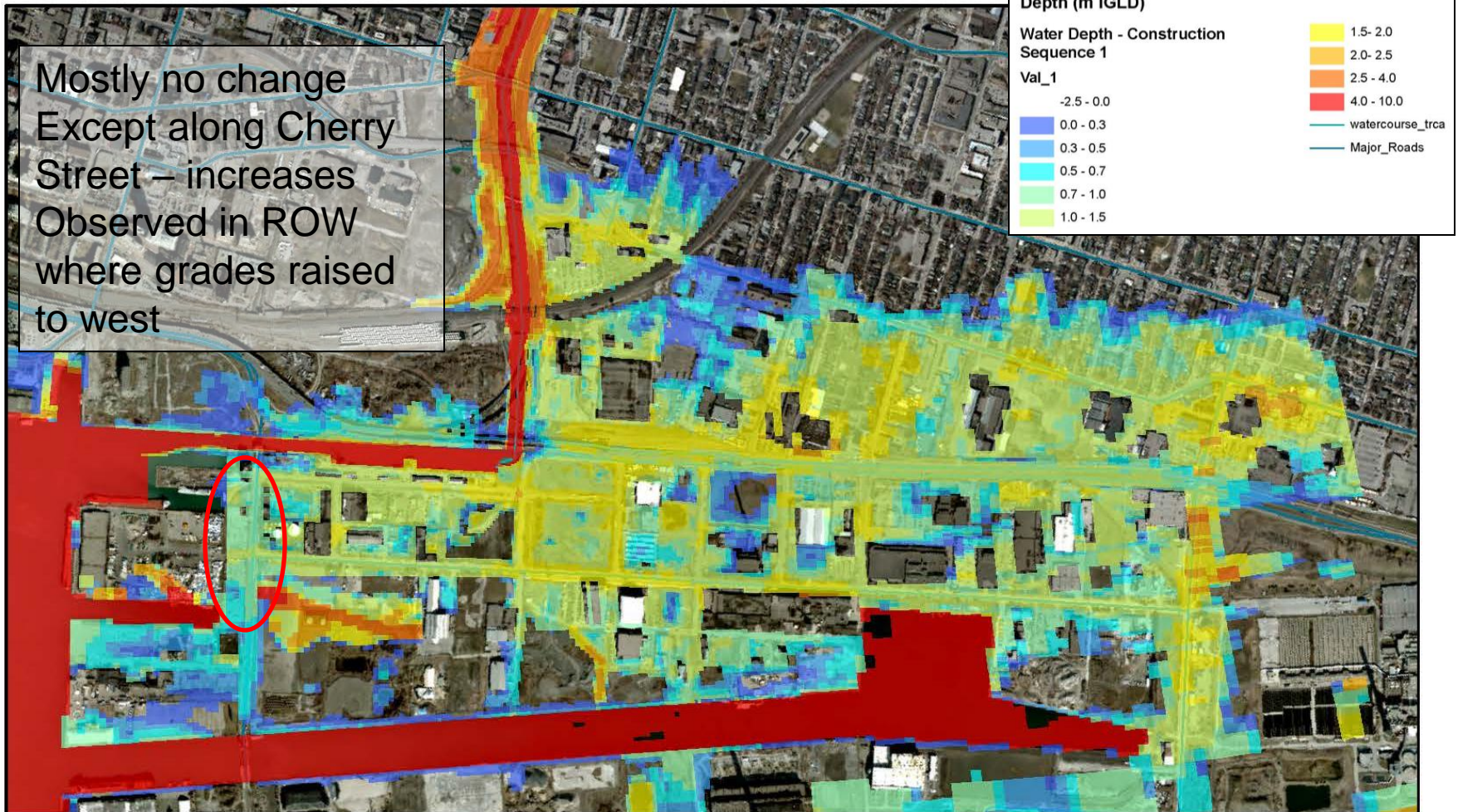


Depth – Refined Existing



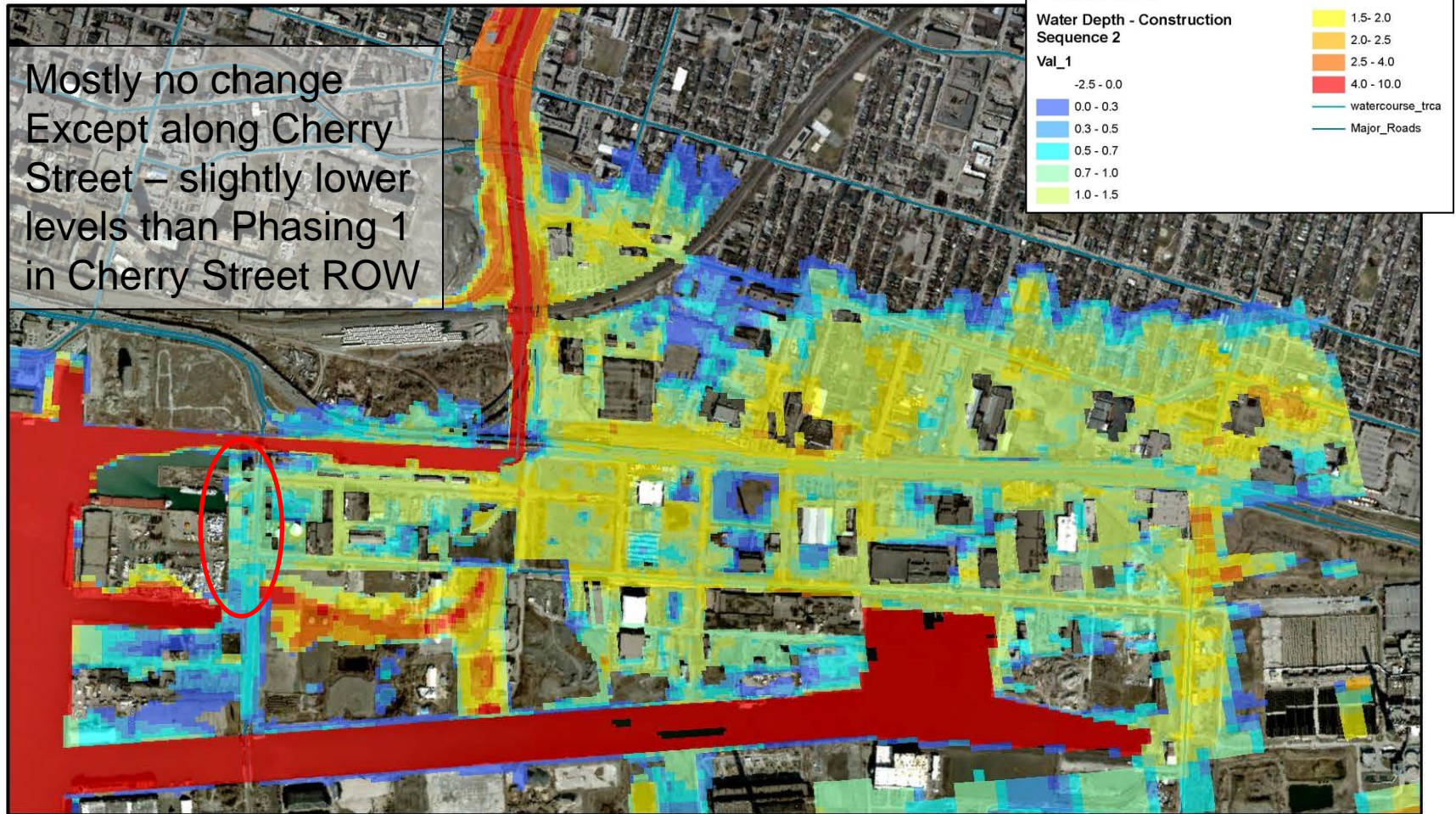


Depth – Construction Phasing 1



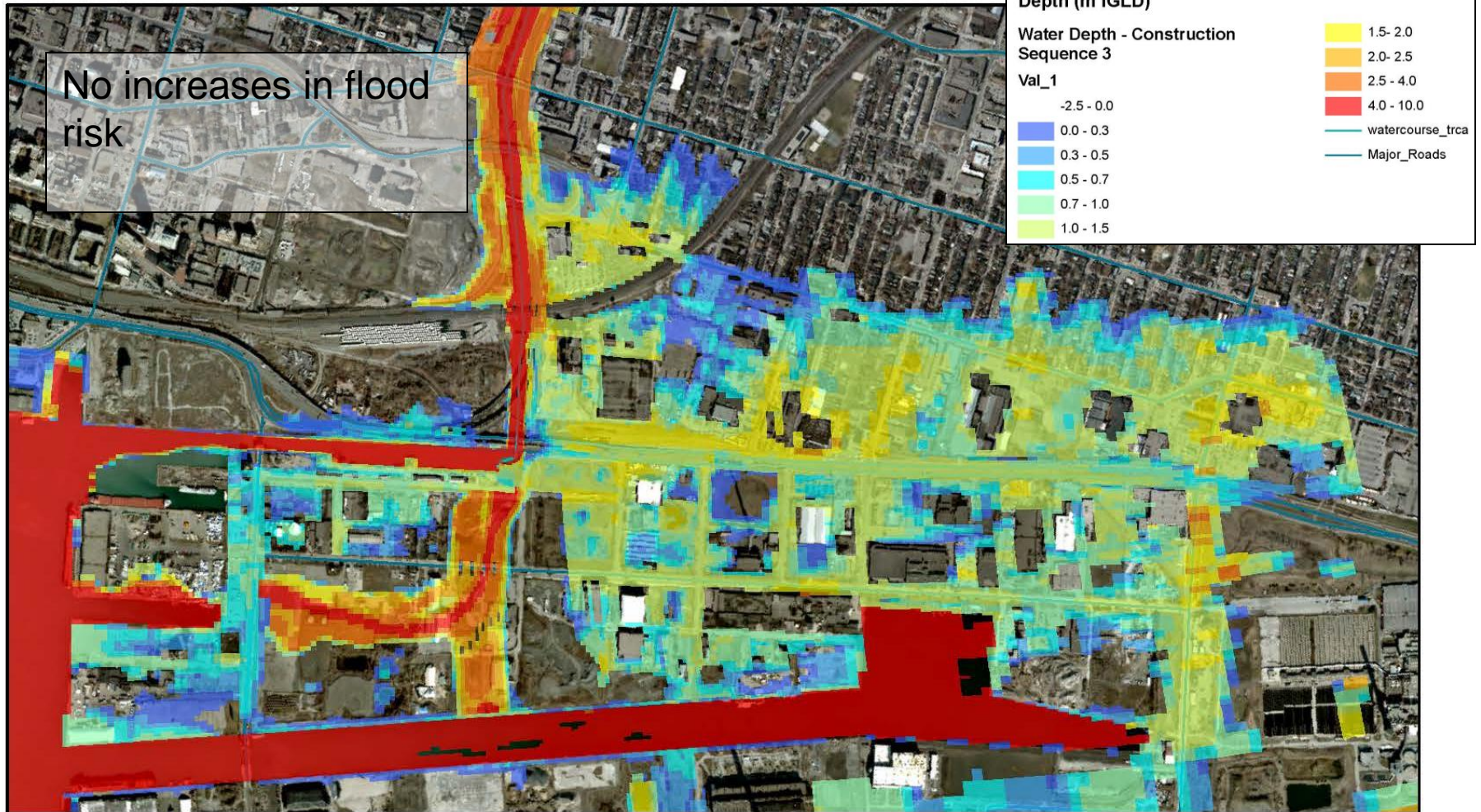


Depth – Construction Phasing 2





Depth – Construction Phasing 3



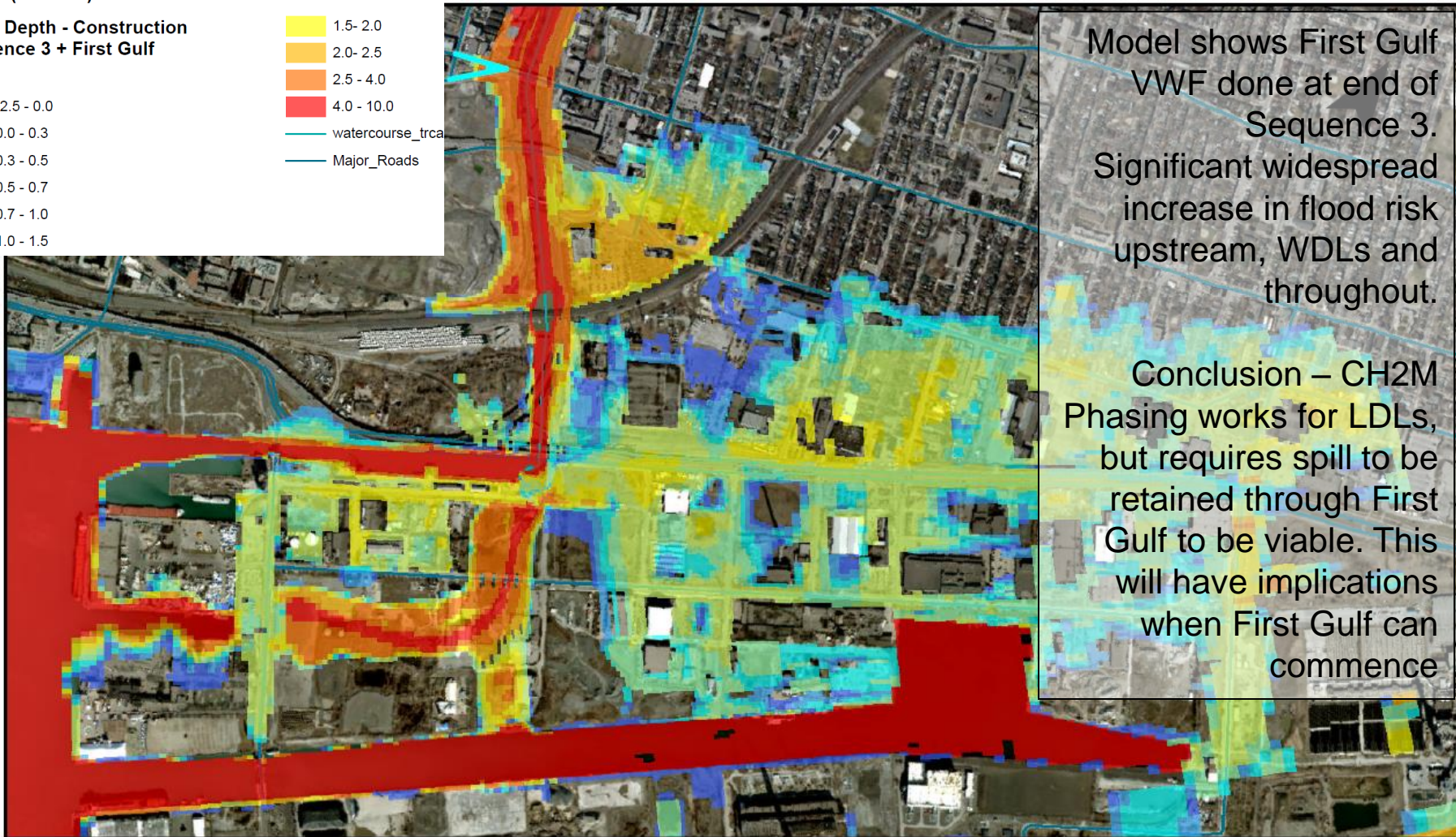
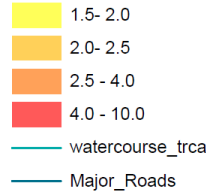
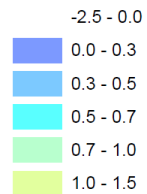


Depth – Construction Phasing 3 & First Gulf

Depth (m IGLD)

Water Depth - Construction
Sequence 3 + First Gulf

Val_1

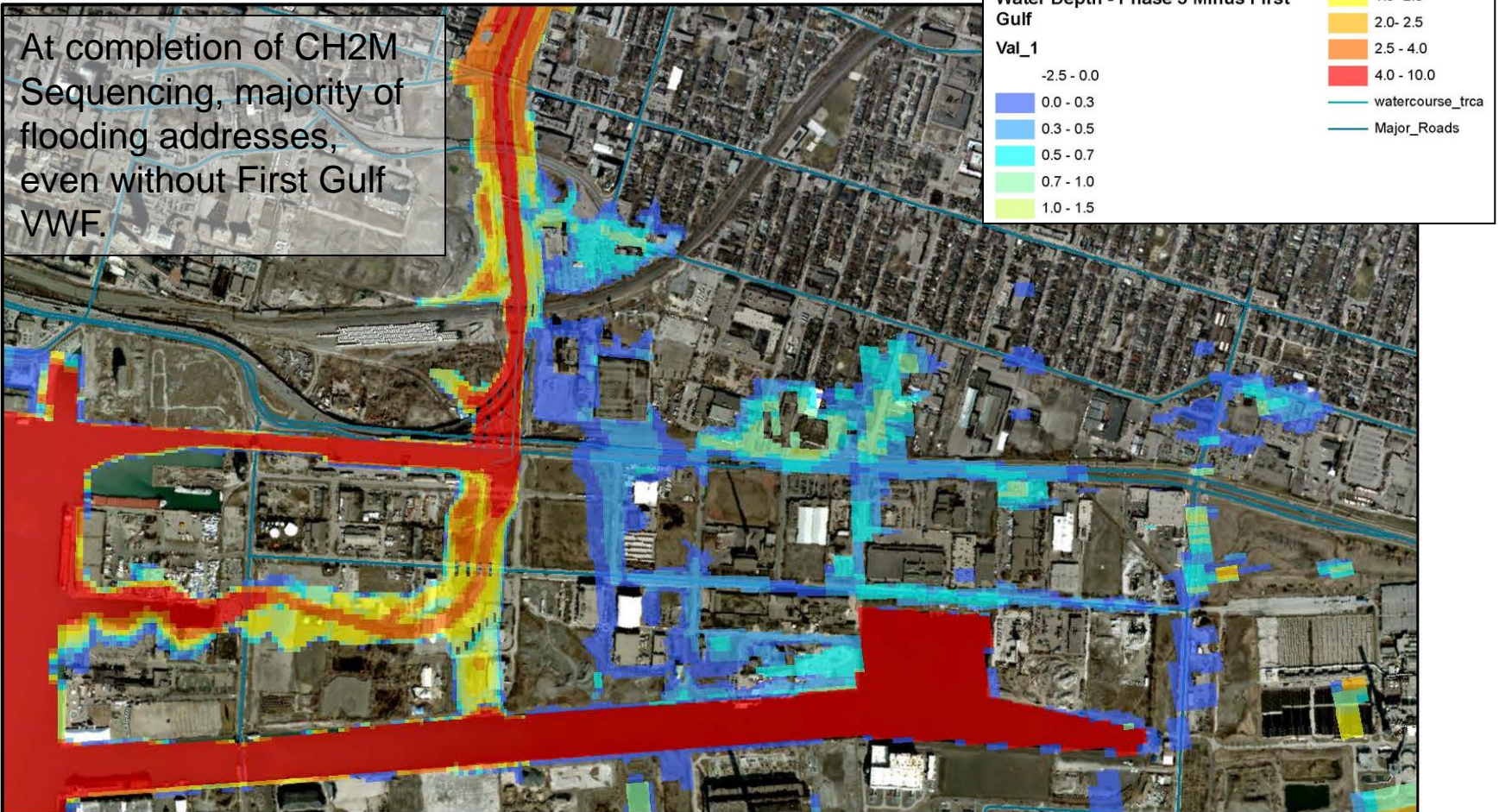


Model shows First Gulf
VWF done at end of
Sequence 3.
Significant widespread
increase in flood risk
upstream, WDLs and
throughout.

Conclusion – CH2M
Phasing works for LDLs,
but requires spill to be
retained through First
Gulf to be viable. This
will have implications
when First Gulf can
commence



Depth – Phase 4 minus First Gulf VWF





Depth – Full Implementation

At completion of CH2M Sequencing and First Gulf VWF – Flooding contained.

