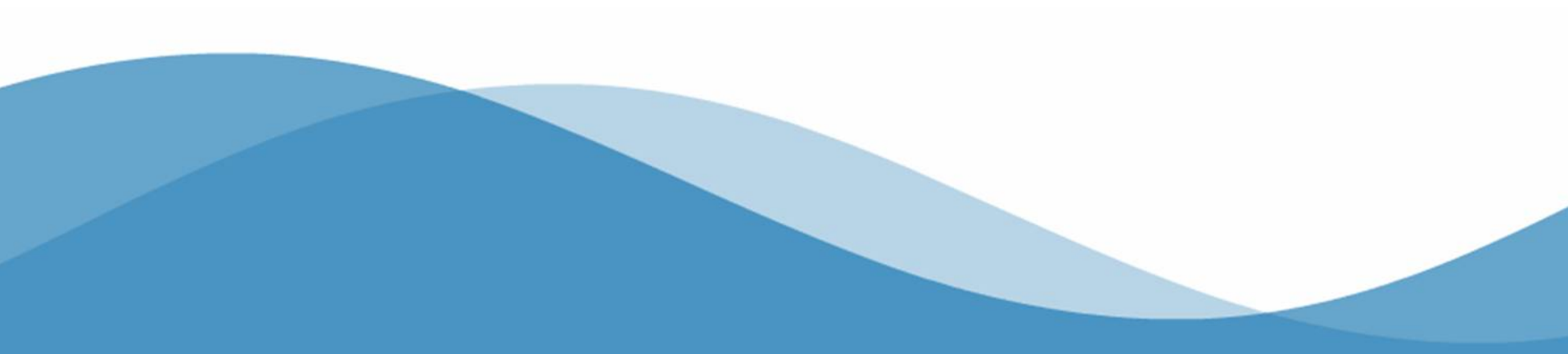




# Toronto Central Waterfront

Queens Quay Revitalization EA  
Lower Spadina Avenue to Lower Jarvis Street  
Municipal Class Environmental Assessment (Schedule C)



# Background





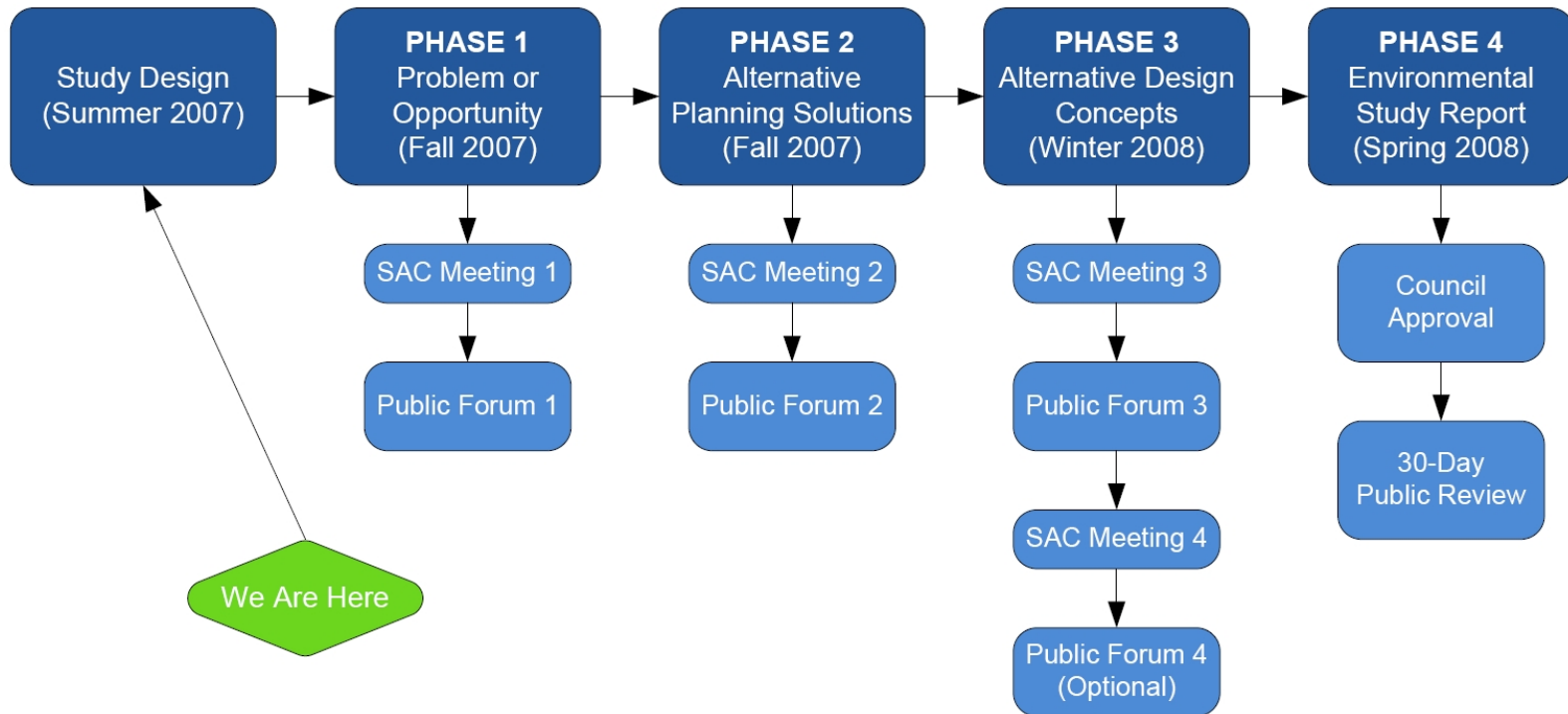
# Purpose of the Undertaking



## Purpose of the Undertaking

- Create a character-defining urban design and city-building element that will announce the central waterfront as a truly public place for the city as a whole, while branding it as a coherent and attractive stage for recreation, residence and employment
- Improve pedestrian comfort and public amenity
- Provide places for public celebration and special events
- Establish a generously scaled central portion of the Martin Goodman Trail for cyclists, inline skaters, skateboarders, runners and walkers
- Provide workable traffic access to the area so that all modes of travel can be acceptably accommodated during work days and busy summer weekends

# Class Environmental Assessment (EA) Process





# Study Design (Summer 2007)



**Figure 1 Queens Quay Traffic Feasibility Study**

- Primary Study Area
- Secondary Study Area

©2007 Google - Map data ©2007 NAVTEQ™ - Terms of Use

## Phase 1 – Problem/Opportunity (Fall 2007)



- Policy Review
- Existing Conditions



# Time Periods to be Evaluated

- Summer Weekends
- Morning Commuter Peak Hour
- Afternoon Commuter Peak Hour



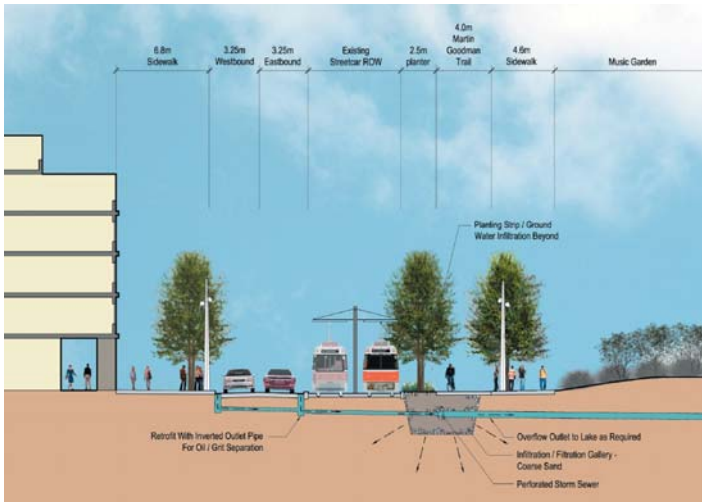
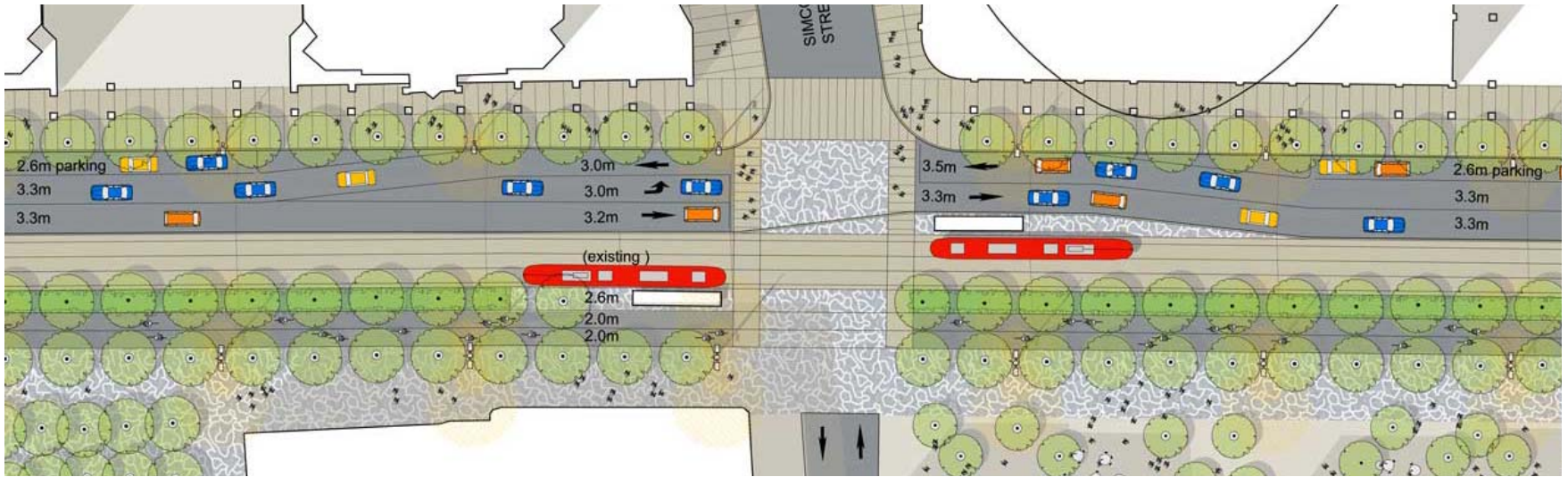


## Phase 2 – Alternative Planning Solutions (Fall 2007)

- Operational changes within the Queens Quay ROW
- Physical changes within the Queens Quay ROW
- Physical changes outside the Queens Quay ROW
- Combinations of the above
- Do nothing



# Phase 3 – Alternative Design Concepts (Winter 2008)



## Phase 4 – Environmental Study Report (ESR) (Spring 2008)

- Document Process and Findings
- File with Municipal Clerk
- Council Approval
- 30-Day Review Period



# Public Consultation

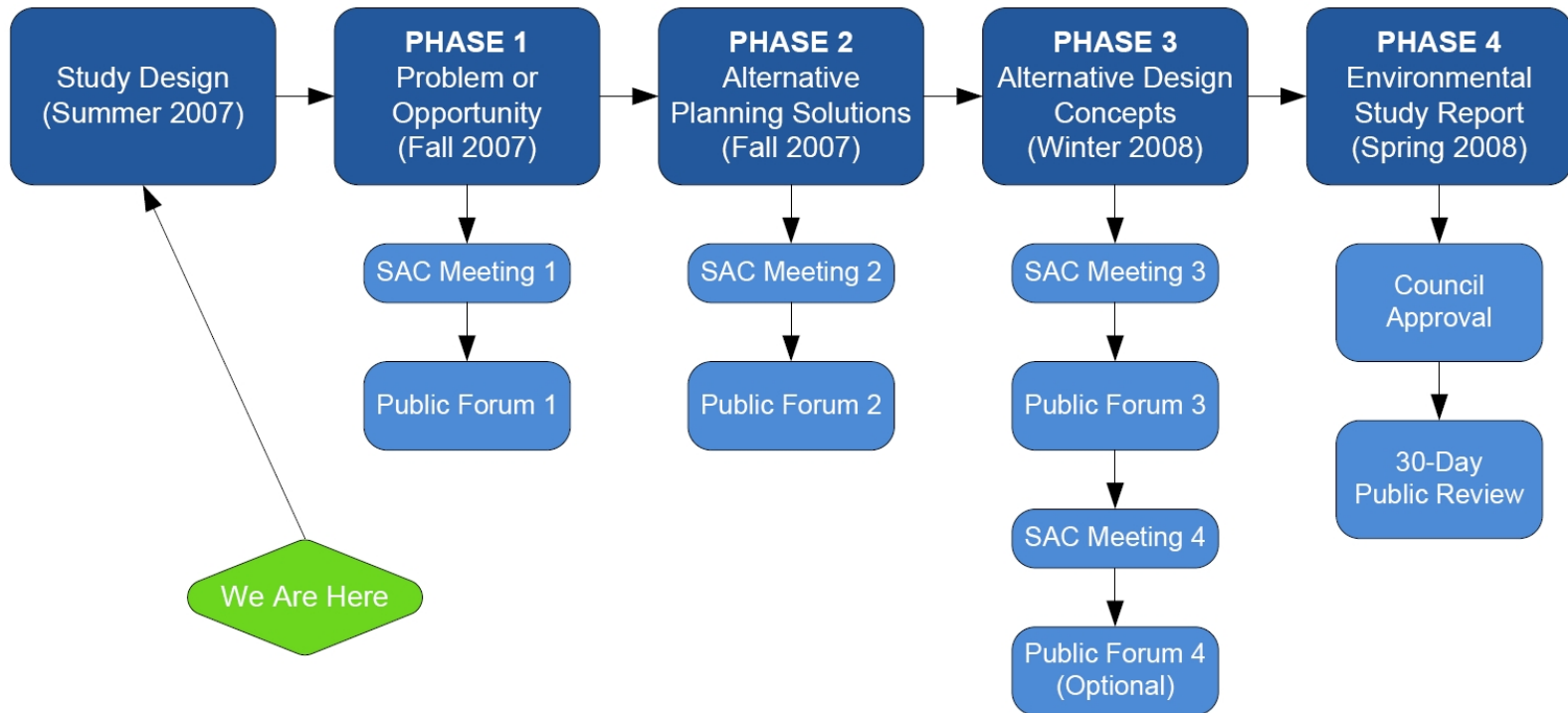
- 3 Public Forums (+1 optional)
- 4 Stakeholder Advisory Committee (SAC) Meetings
- Additional meetings with land owners (as required)



# Coordination with Adjacent Projects



# Class Environmental Assessment (EA) Schedule







[www.WATERFRONToronto.ca](http://www.WATERFRONToronto.ca)

## Stakeholder Advisory Committee (Potential Composition)

- Resident Groups/Associations
  - Bathurst Quay Neighbourhood Association (1)
  - Central Waterfront Neighbourhood Association (1)
  - Harbourfront Community Association (1)
  - York Quay Neighbourhood Association (1)
  - Residents-at-large (2)
- Condominium Boards (2)
- Business/Commercial
  - Queens Quay Harbourfront BIA (1)
  - Other?
- Pedestrian (1)
- Cycling (1)
- Sailing/Boating (1)
- Transit/Transportation (1)
- Heritage (1)
- Tourism (1)
- Waterfront-wide/Island Perspective (2)
- Politicians
  - Local Councillors (2)
  - MPP (1)
  - MP (1)



[www.WATERFRONToronto.ca](http://www.WATERFRONToronto.ca)