



**WATERFRONT**Toronto



**Waterfront Toronto**  
**Annual General Meeting**  
**October 2, 2007**

# Overview

## Progress & Accomplishments

- Parks & Public Realm
- Development
- Sustainability

## 2011 Milestones & Deliverables

- Waterfront West
- Central Waterfront
- West Don Lands
- East Bayfront
- Port Lands



**2006/07**

# **Progress & Accomplishments**



# Central Waterfront

- Work underway on central waterfront
- EA underway; complete 2008
- Spadina Head of Slip
  - 700 m<sup>2</sup> boardwalk
  - Connect existing amenities
  - Complete June 2008



# Mimico Waterfront Linear Park

- Construction well underway
- Provide community access to shoreline
- Waterfront trail, sand dunes, cobble beaches and aquatic habitat
- First phase open Summer 2008



# Port Lands Sports Fields

- Sports Fields are substantially complete
- Two regulation size fields
- Playground and washrooms complete Spring 2008
- Meeting important recreational needs



# Lower Don Lands Innovative Design Competition

- Design competition launched Feb. 2007
- Four international teams competed
- Goal to create vision for area and address infrastructure challenges
- MVVA's "Port Lands Estuary" winning submission
- Transform area into a sustainable "green" city
- Mouth of Don River centerpiece of design



## West Don Lands

- Construction underway on six hectare berm
- Don River Park built on top of berm; complete 2009
- Completion of CN Kingston Bridge and Bala Pedestrian Underpass
- RFQ released in June; five teams short-listed for RFP
- TCHC affordable housing partner; construction underway shortly





# West Don Lands Berm Construction



# West Don Lands Bridge Extension



# East Bayfront

- \$12.5M invested in First Waterfront Place
- Corus Entertainment's Toronto headquarters as anchor tenant
- Significant employment district for city
- LEED Gold certification



TEDCO-CORUS South Elevation—Diamond + Schmitt Architects

# Sustainability

- District Energy
- Waterfront Transit
- Aquatic Habitat Restoration Strategy
- Staff LEED Accreditation



# Partners – Thank You!

- Shareholders – federal, provincial and municipal governments and their waterfront staff
- Community Stakeholders
- Partners - TRCA, ORC, TEDCO, TPA, TCHC, TTC, HFC
- Staff, consultants, board members and design review panel



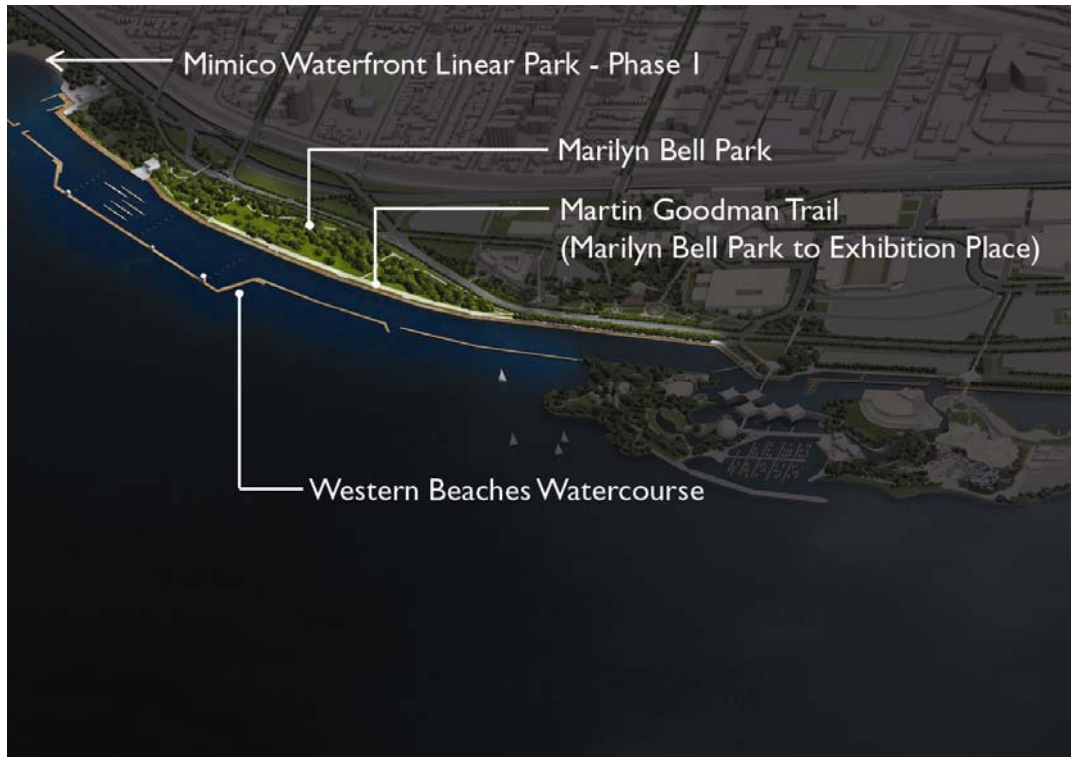
**2007-2011**

# **Milestones and Deliverables**



# 2007

## Waterfront West



# 2008

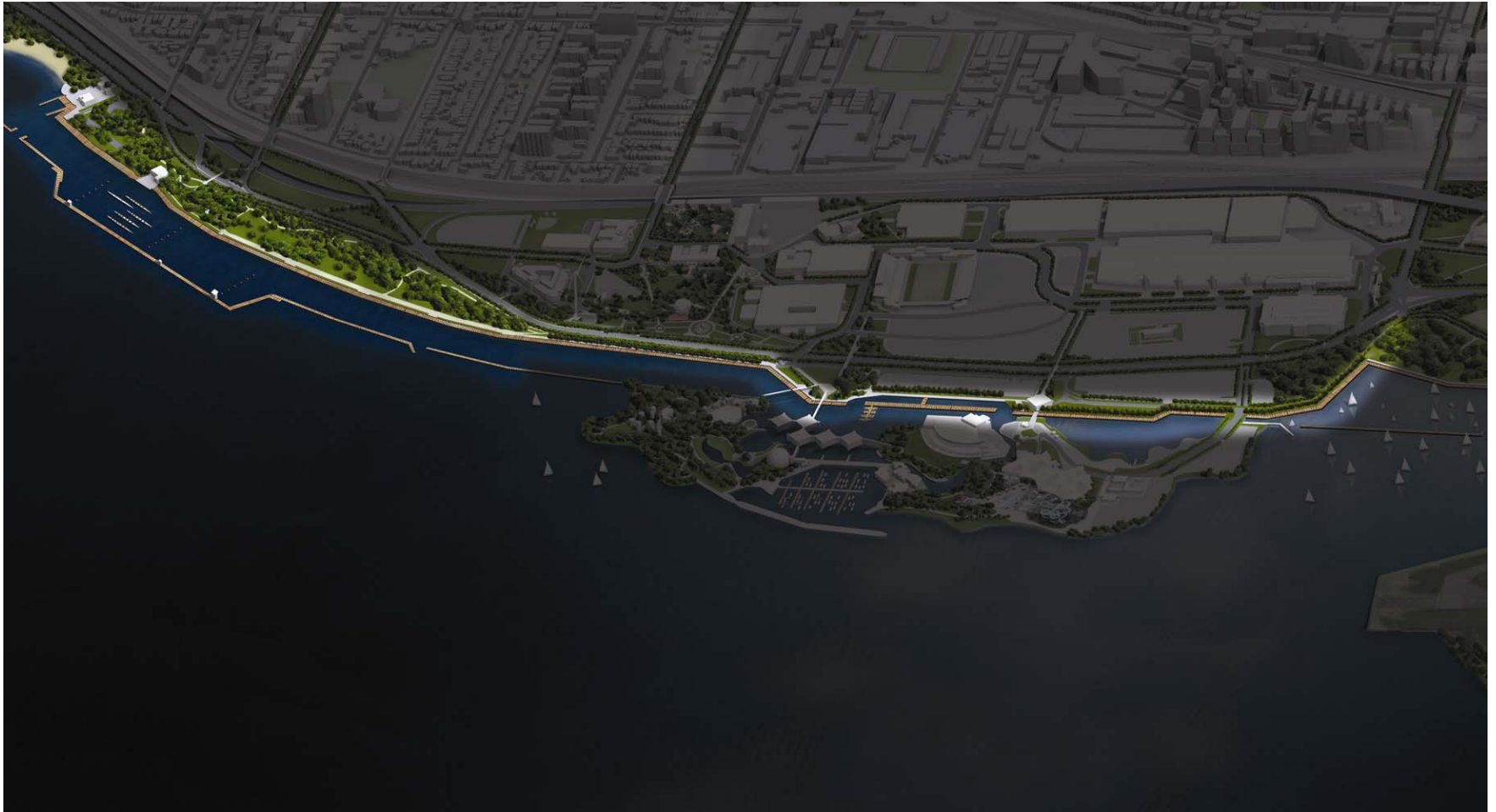
## Waterfront West





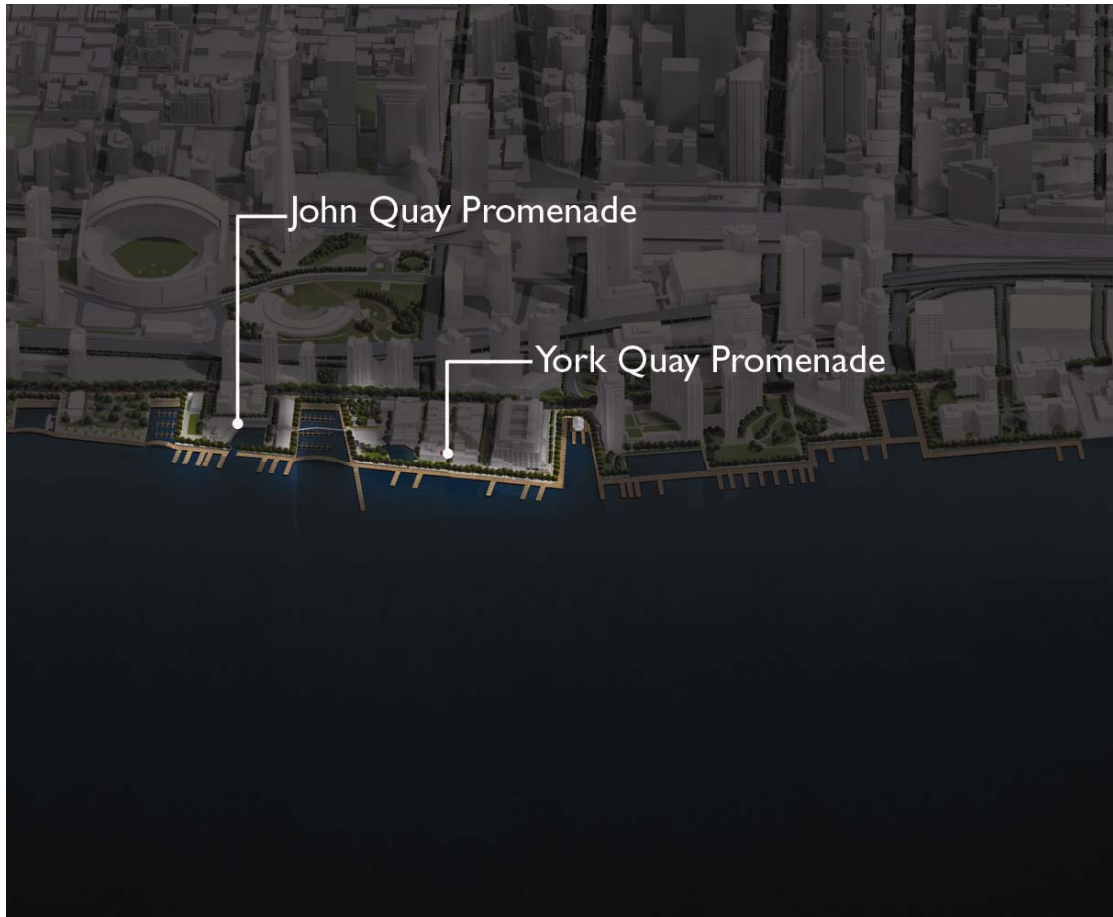
2007-2011

# Waterfront West



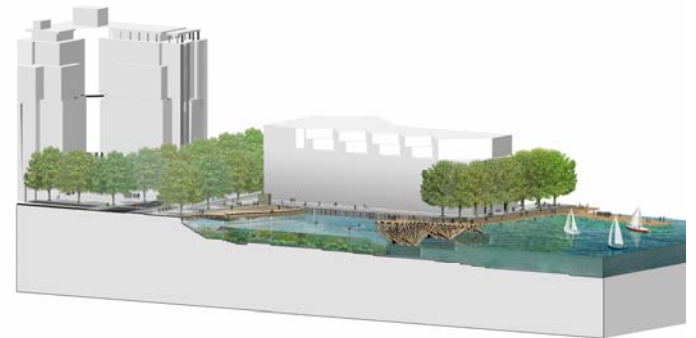
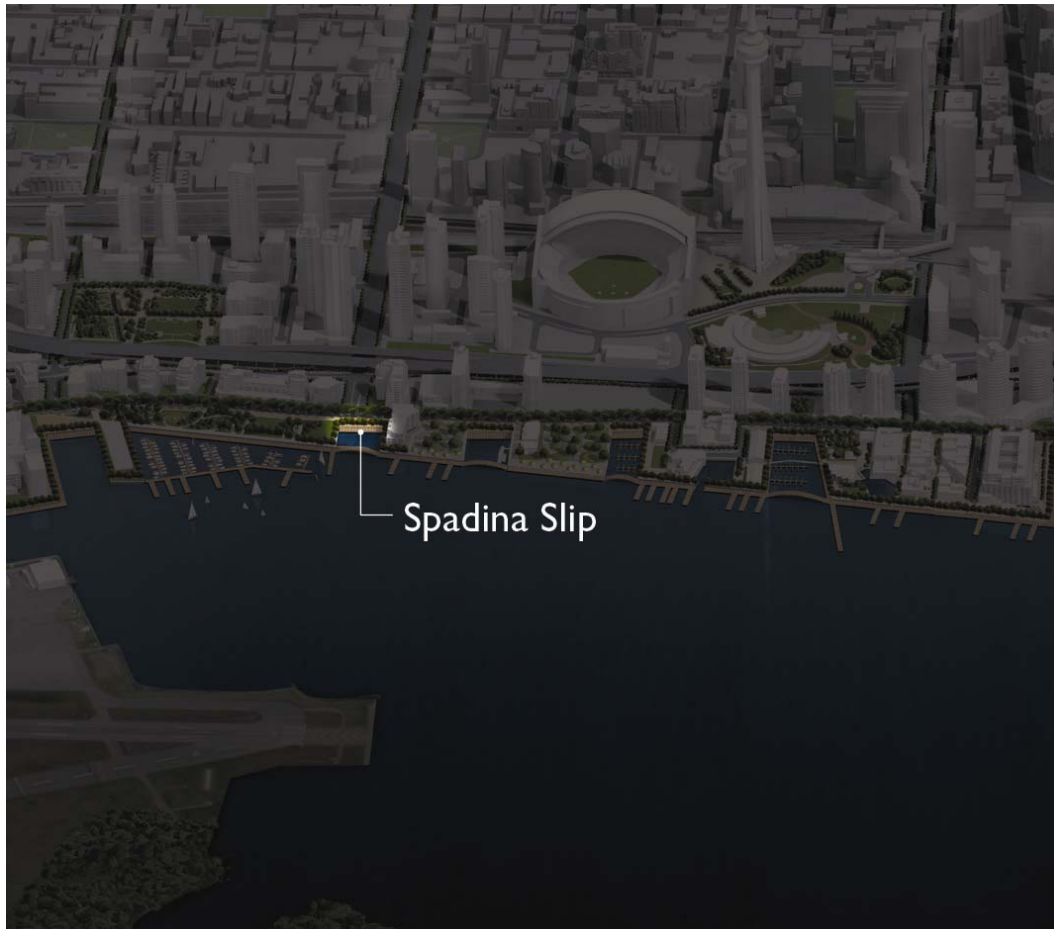
# 2007

## Central Waterfront



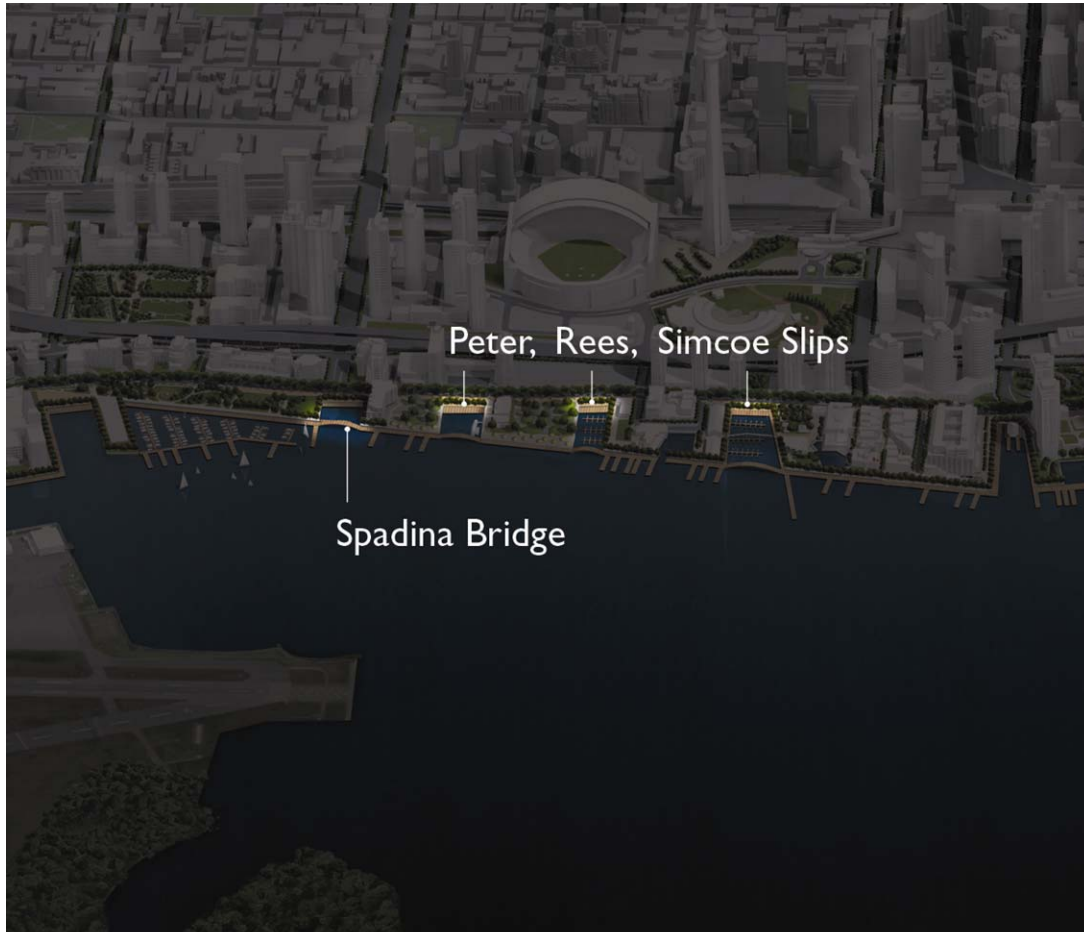
# 2008

## Central Waterfront



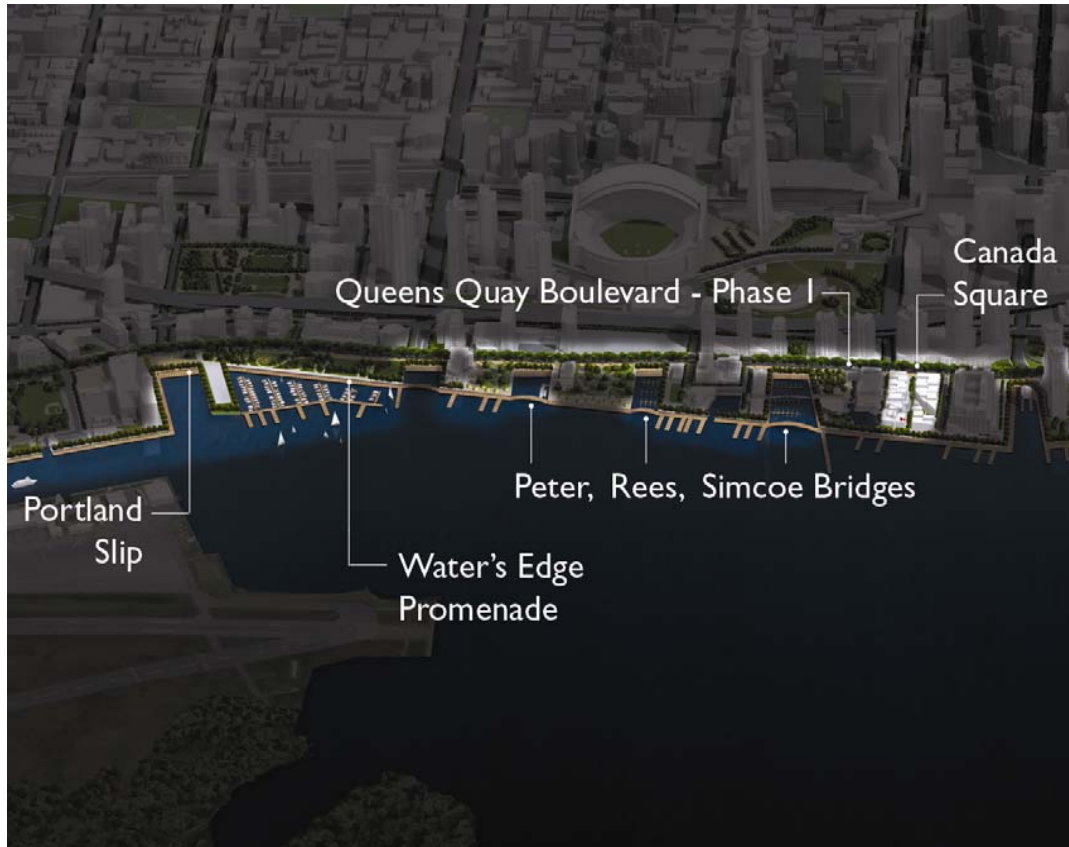
# 2009

## Central Waterfront



# 2010

## Central Waterfront



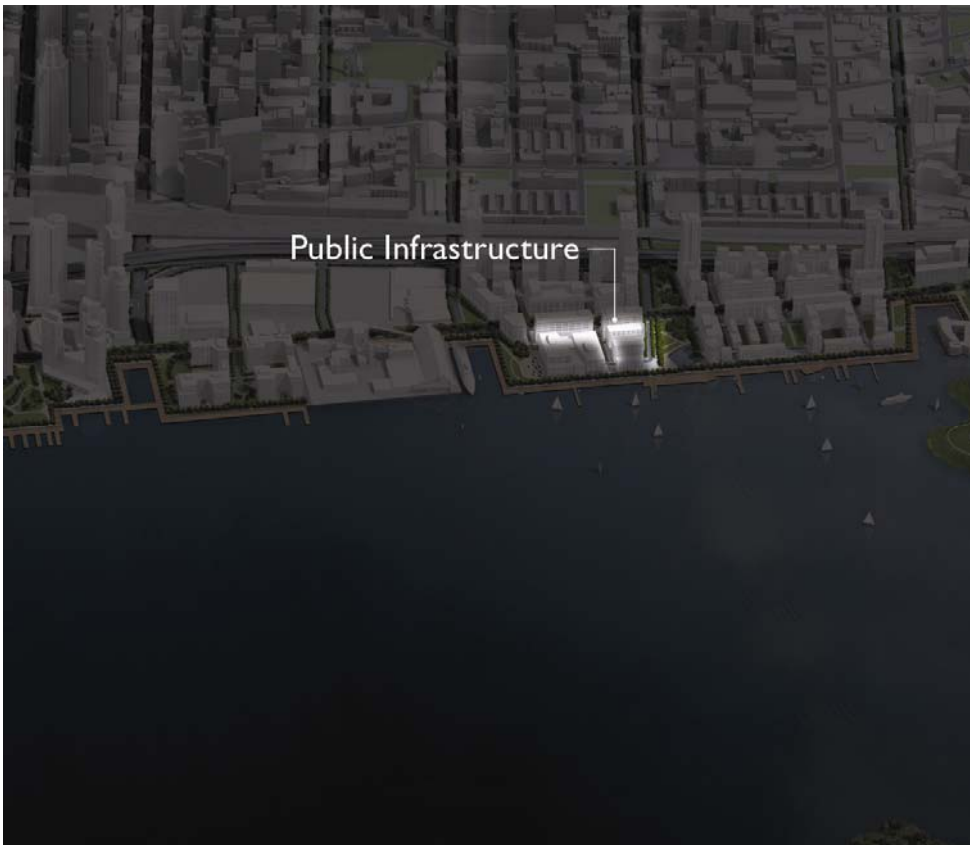
2007-2011

# Central Waterfront



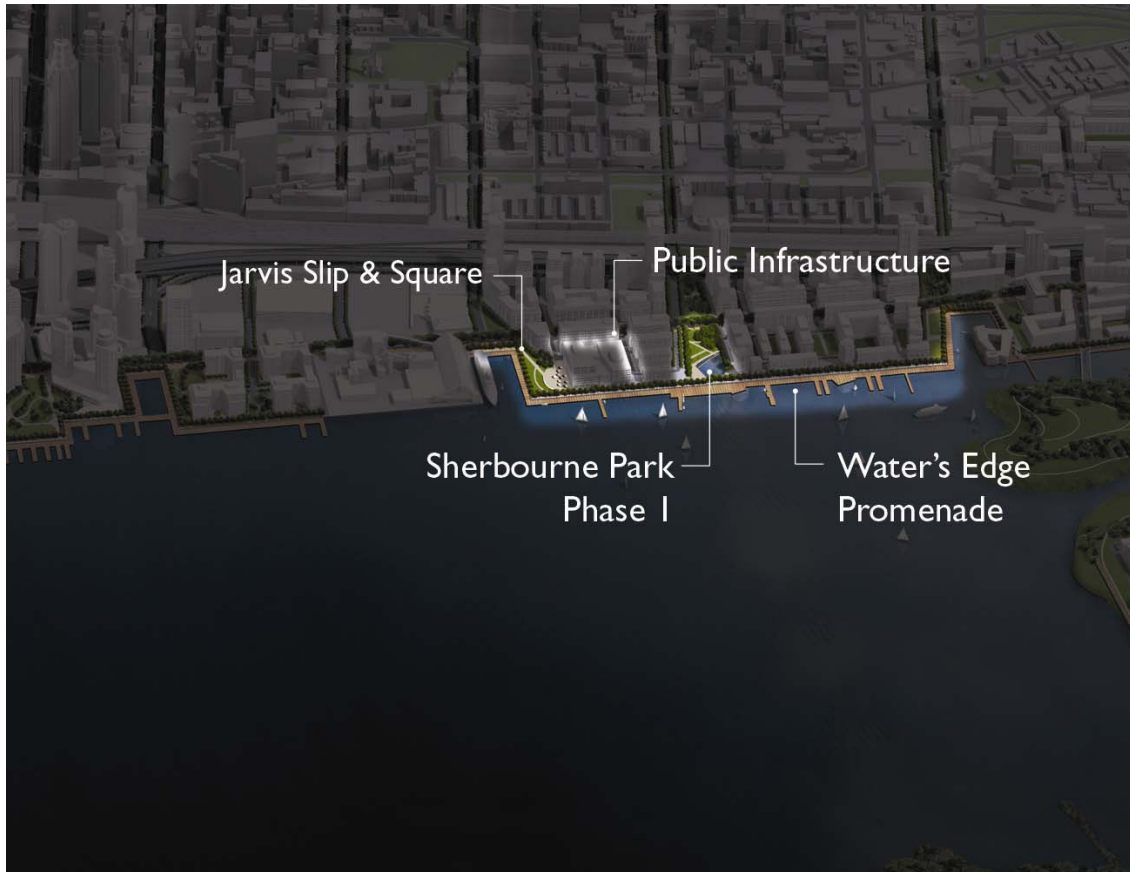
# 2008

## East Bayfront



# 2009

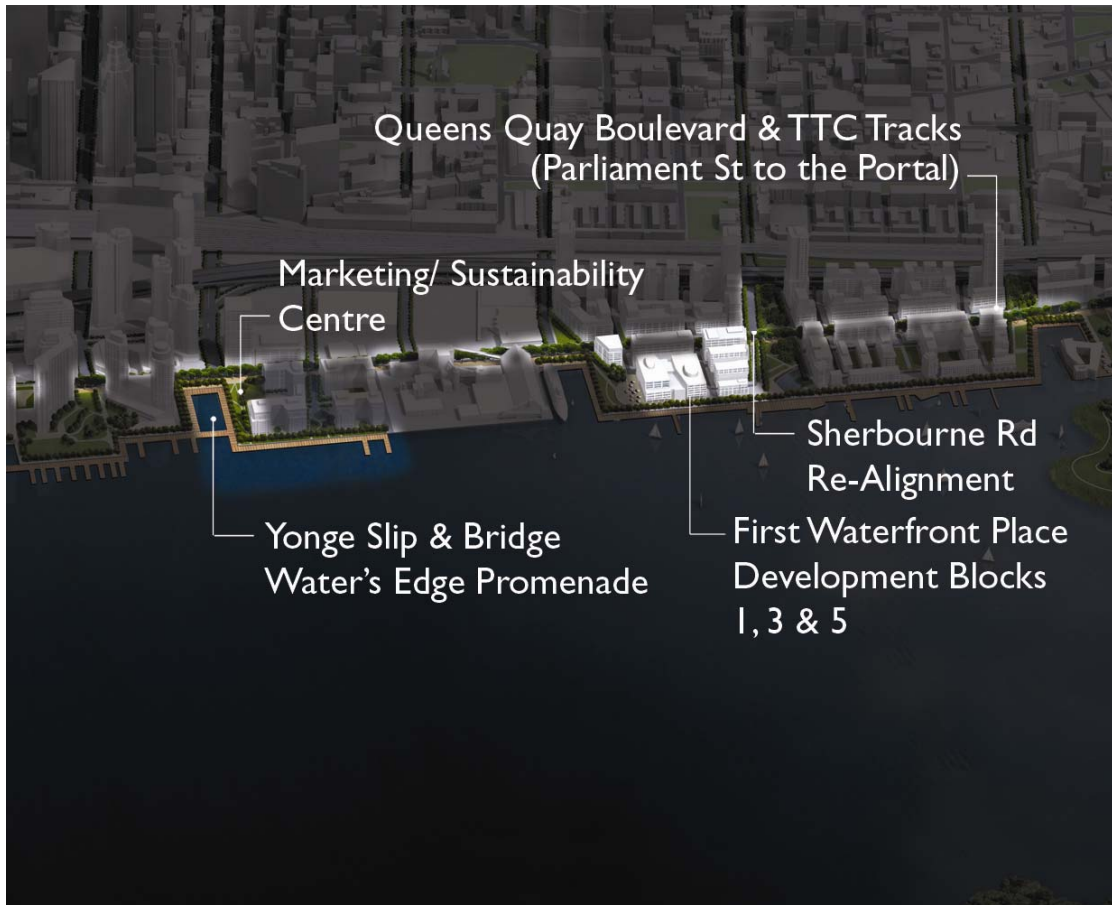
## East Bayfront





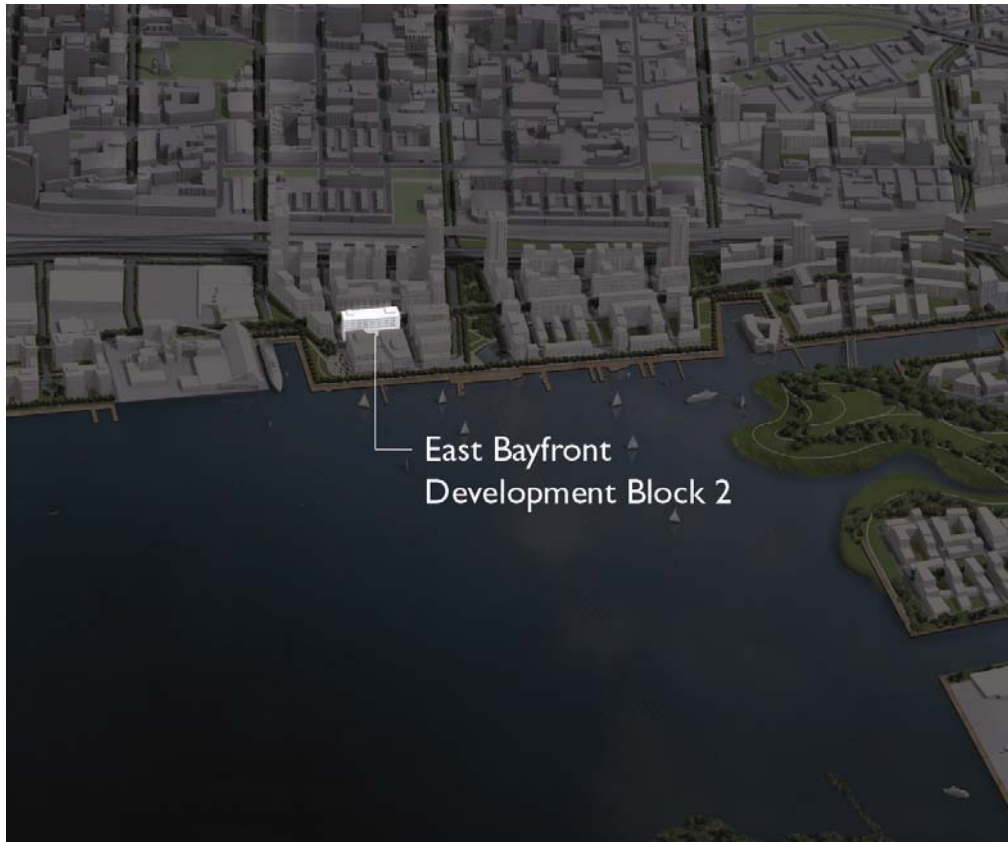
# 2010

## East Bayfront



# 2011

## East Bayfront



2007-2011

## East Bayfront



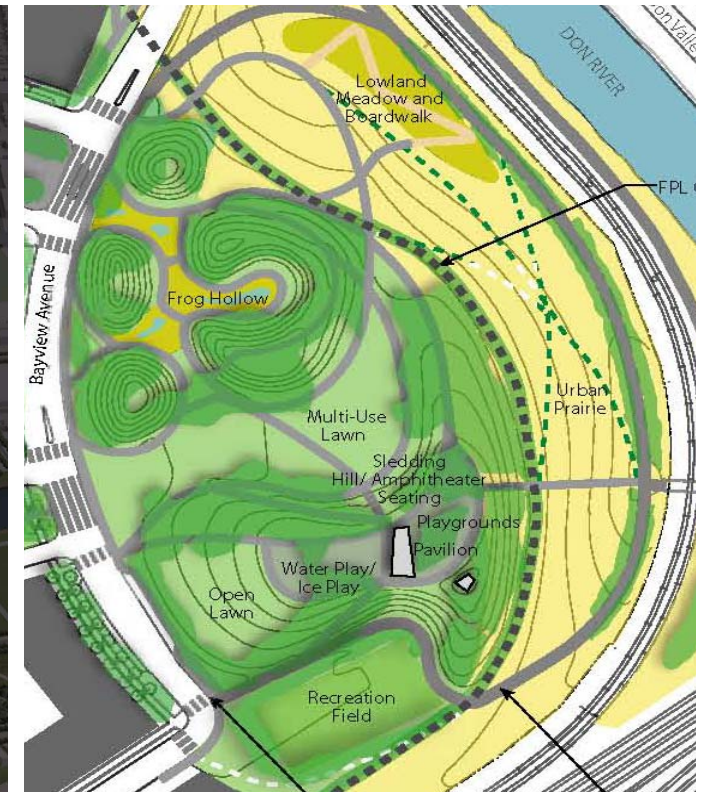
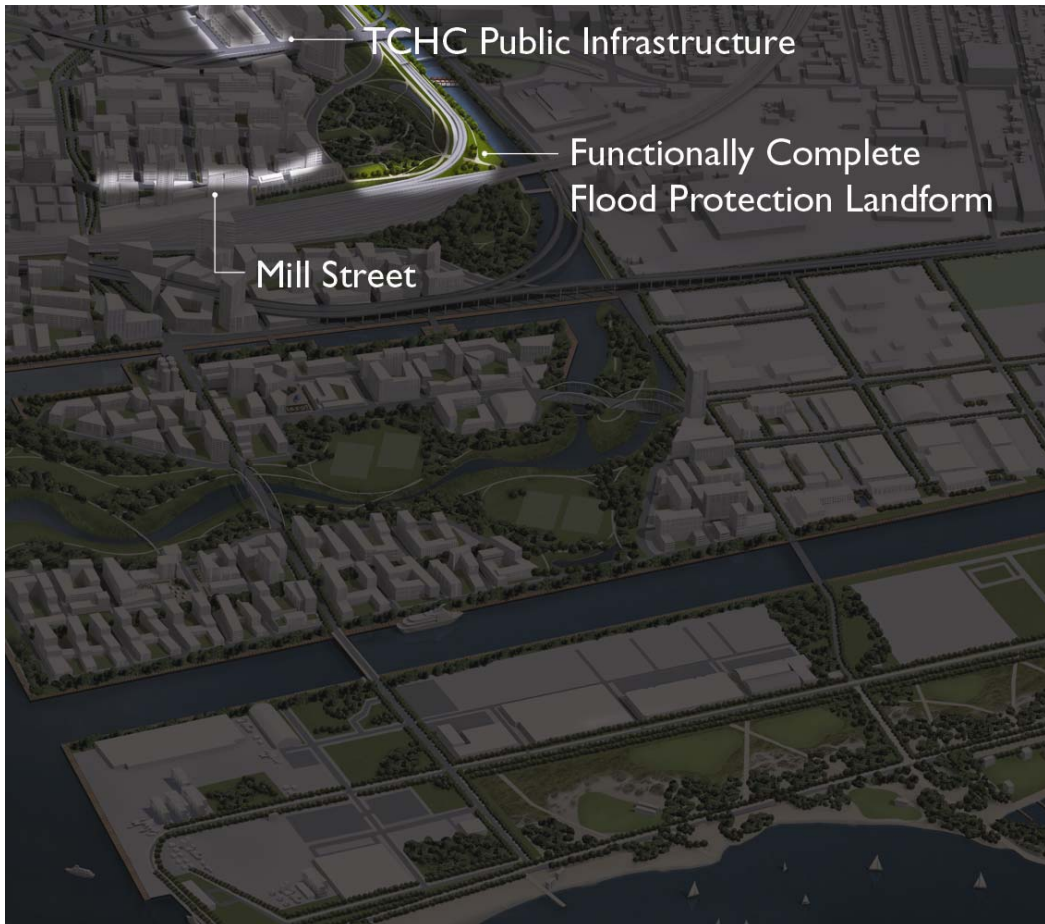
# 2007

## West Don Lands



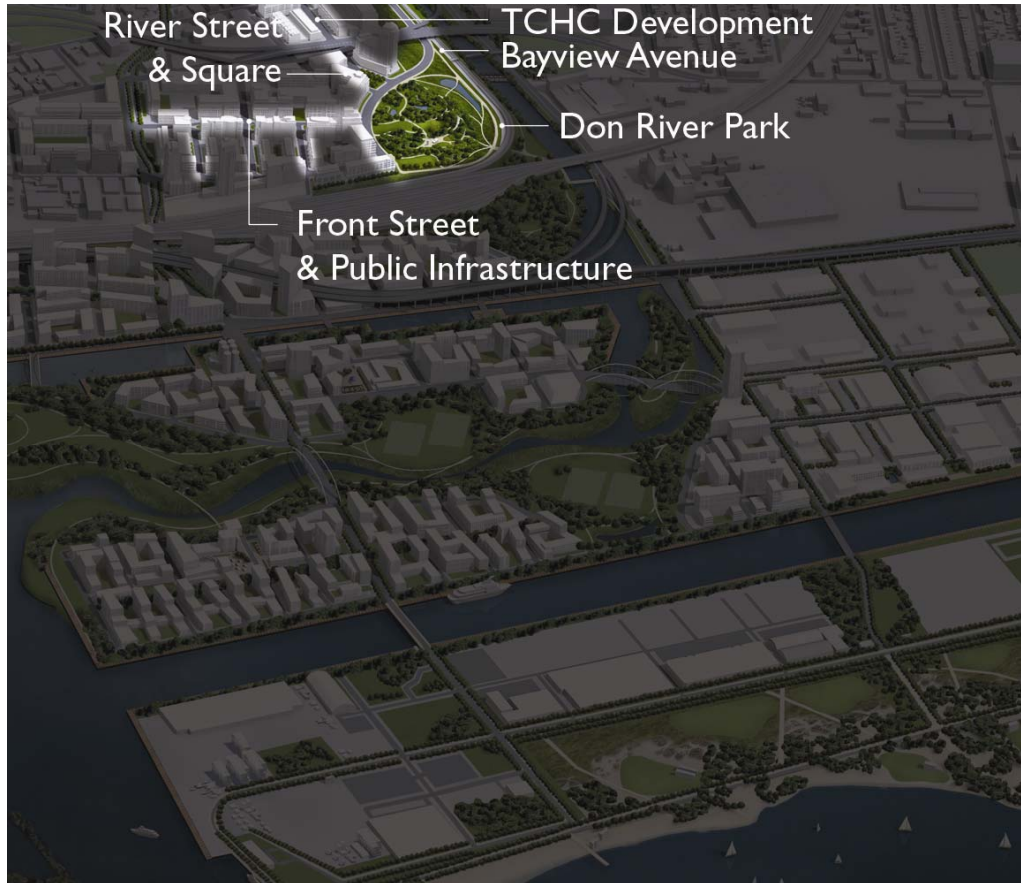
# 2008

## West Don Lands



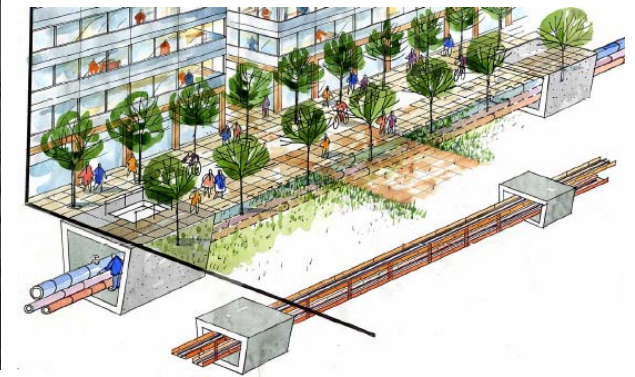
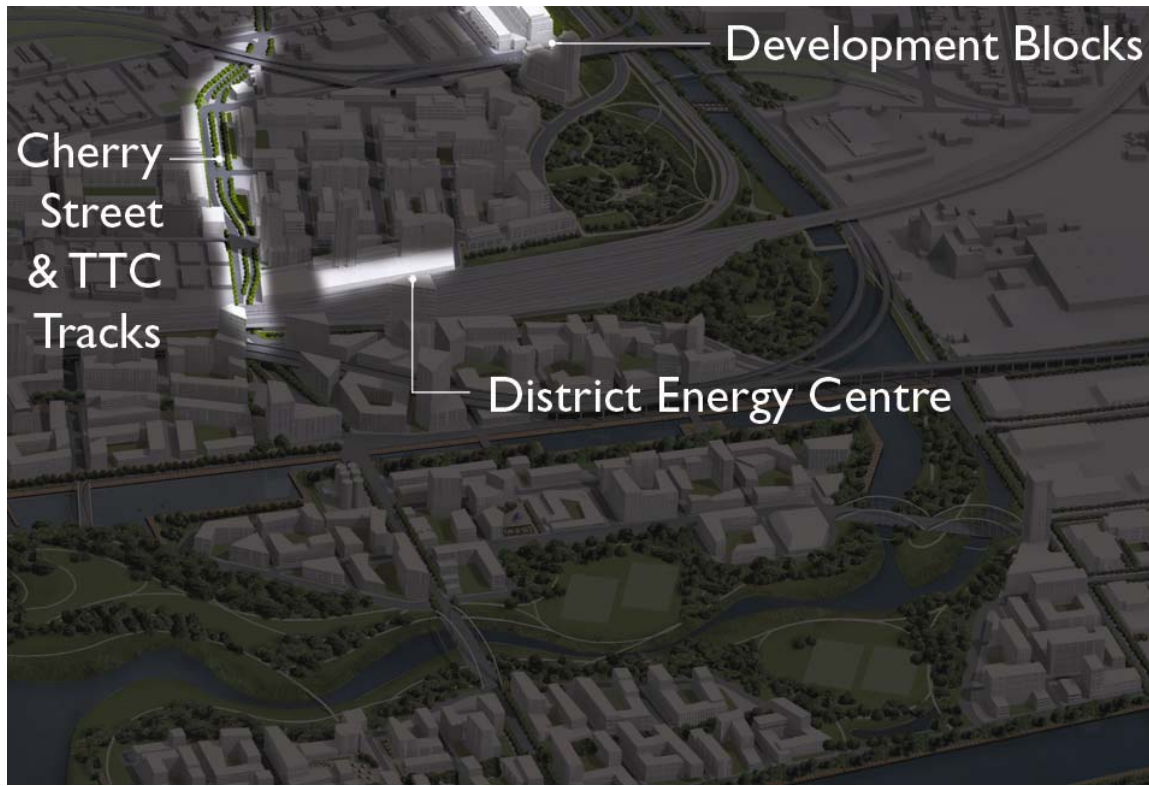
# 2009

## West Don Lands



# 2010

## West Don Lands



# 2011

## West Don Lands





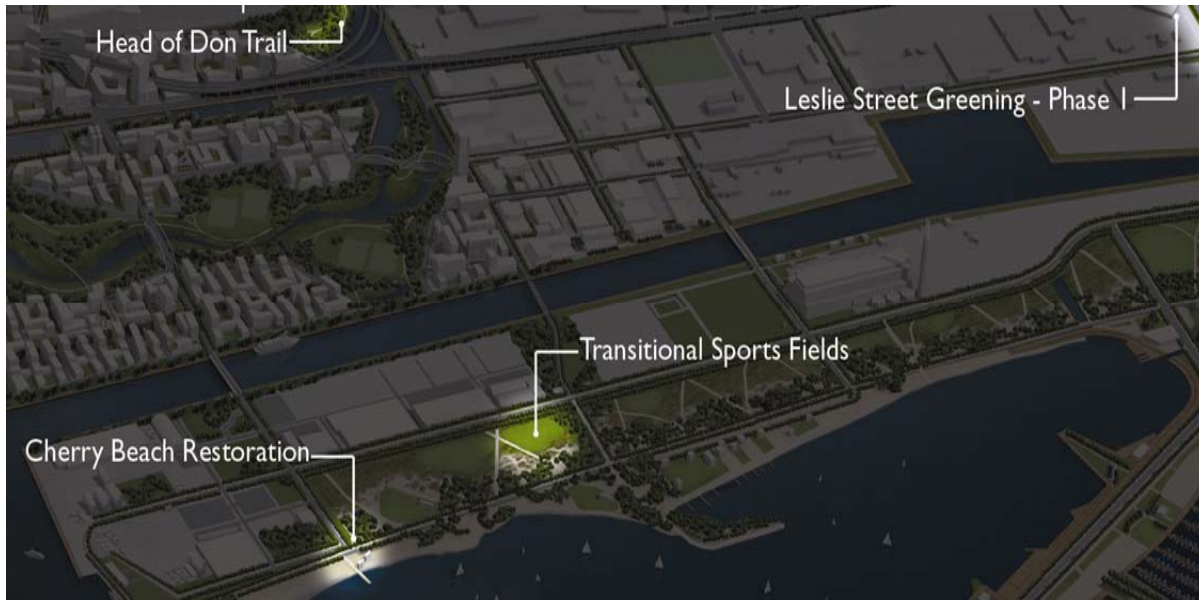
2007-2011

## West Don Lands



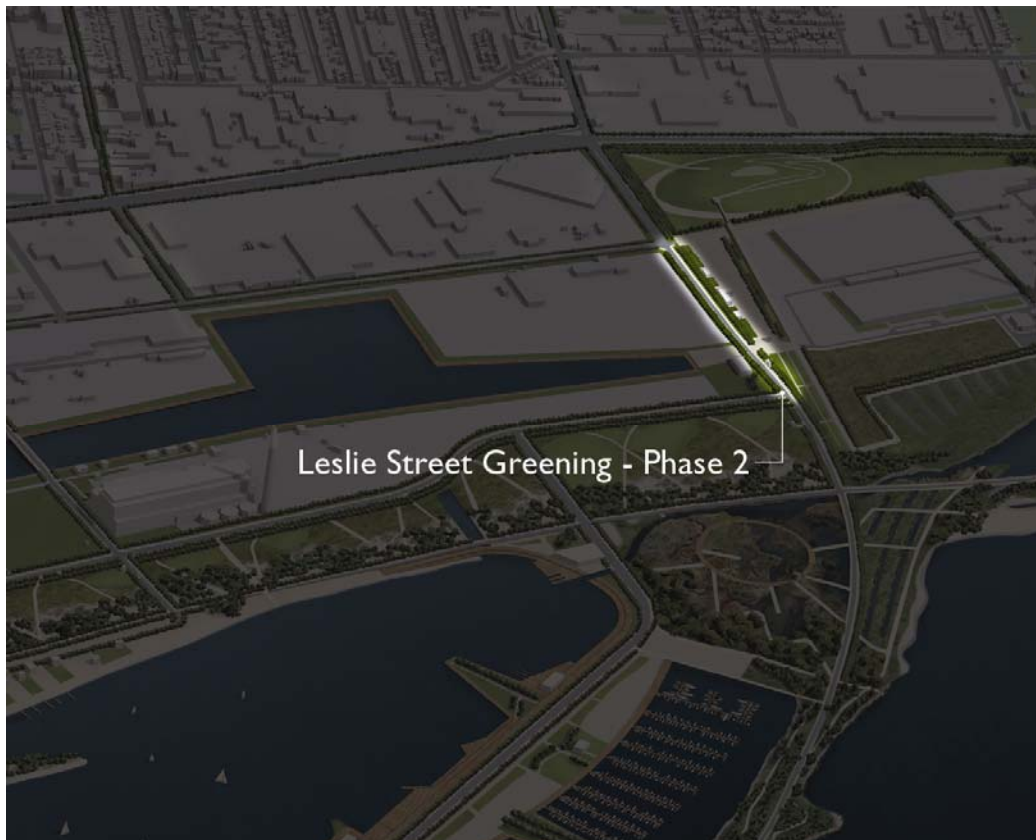
# 2007

## Port Lands



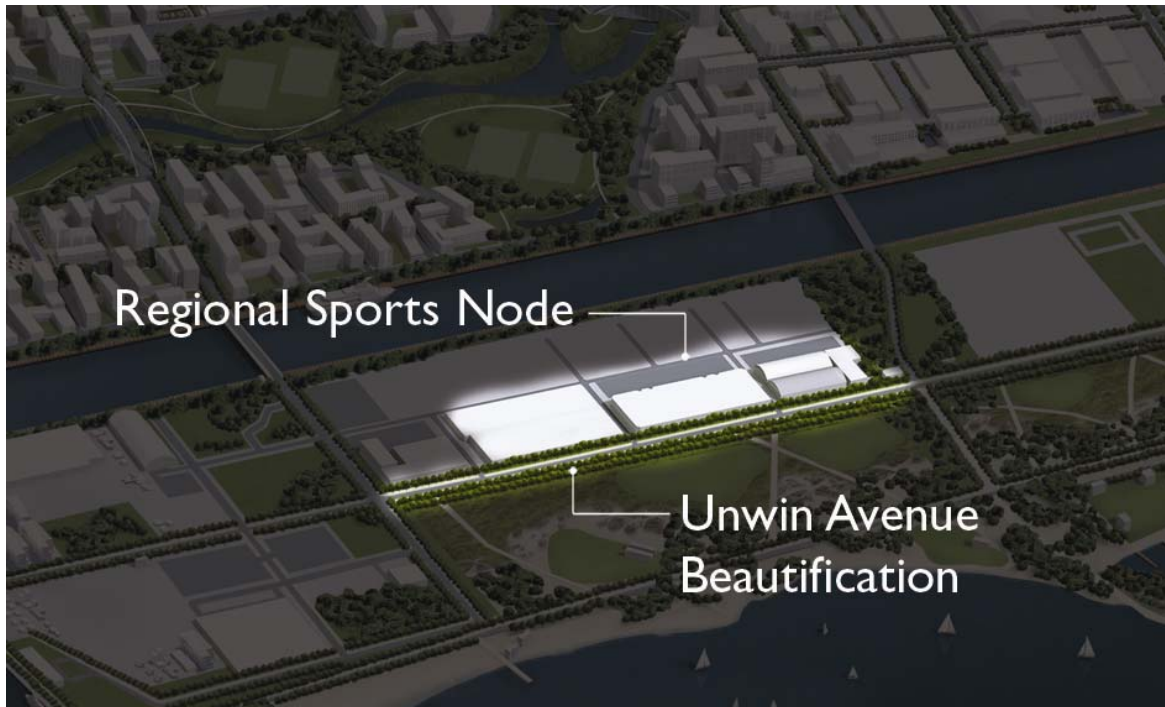
# 2008

## Port Lands



# 2010

## Port Lands



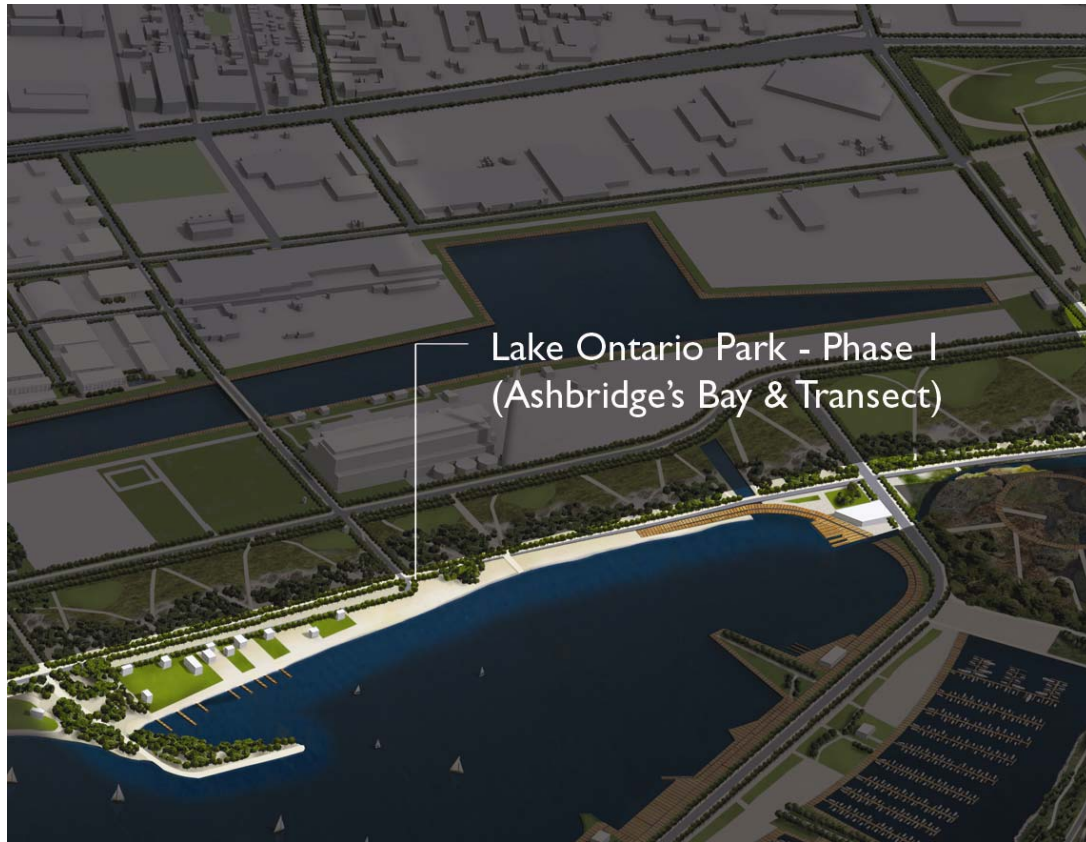
# 2011

## Port Lands Lower Don Lands



# 2011

## Port Lands Lake Ontario Park



2007-2011

## Port Lands





Watercourse Park

Ontario Place

*\$17 Billion in investment*



# Questions & Answers

