

**APPENDIX 3. History of the Don Greenway Idea. Powerpoint Presentation by  
John Wilson**

# Don Greenway Workshop September 18, 2007

## History of the Don Greenway Idea

John Wilson

Task Force to Bring Back the Don

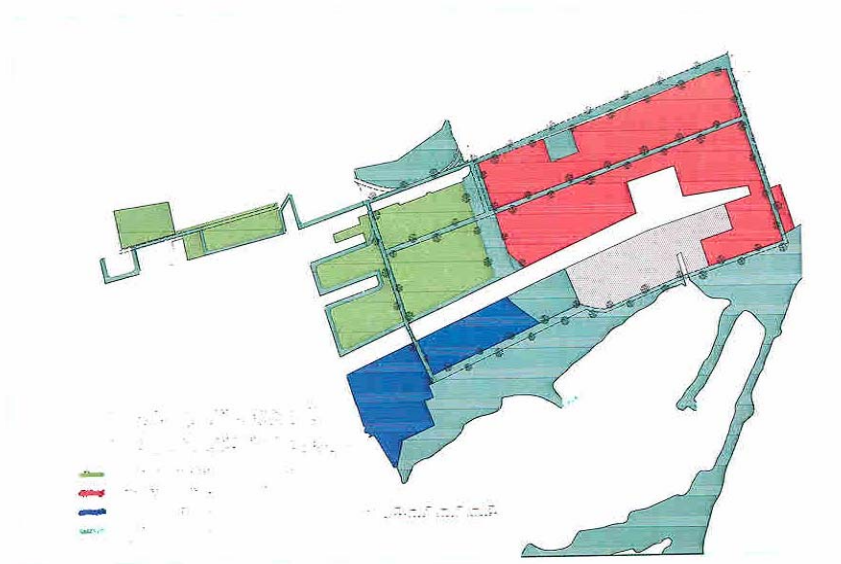
## Royal Commission on the Future of Toronto's Waterfront

- Drawing upon work of others, e.g. Toronto Field Naturalists, Toronto Ornithologists, Friends of the Spit, etc.
- Hearings and background studies, e.g. # 10 "Environment in Transition"

*"The vegetated areas along the north shore provide a connection to the Don Valley, albeit a fragmented one, for continued migration."*

(P. 60)

Royal Commission of the Future of the Toronto Waterfront  
“Watershed” (2<sup>nd</sup> Interim Report) - 1990



## Regeneration

Toronto's Waterfront and the Sustainable City  
Final Report 1992

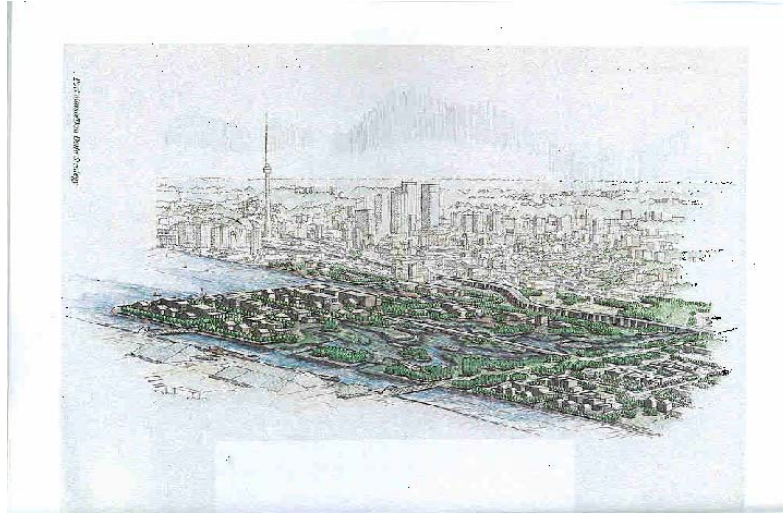
Don Greenway purpose:

Provide buffer between wildlife and human uses.

Provide linkages between parks and green spaces.

Especially, provide a migratory link from Tommy Thompson and North Shore Parks to Don Valley.

## Bringing Back the Don - 1991



### “Bringing Back the Don” Report to Council 1991

- Recommended a Port Lands delta for the Don River.
- Hydrological link to restore natural function at the Mouth of Don River.
- No discussion of “greenway” link to North Shore.

Metropolitan Toronto Official Plan 1994  
Metropolitan Green Space System



## Metropolitan Toronto Official Plan 1994

- First expression of the Don Greenway in an official planning document.
- Only shown on the map – No specific discussion.
- In general the Waterfront Green Space System was to restore ecosystem integrity, to improve the physical connection to other green spaces, to provide recreation.



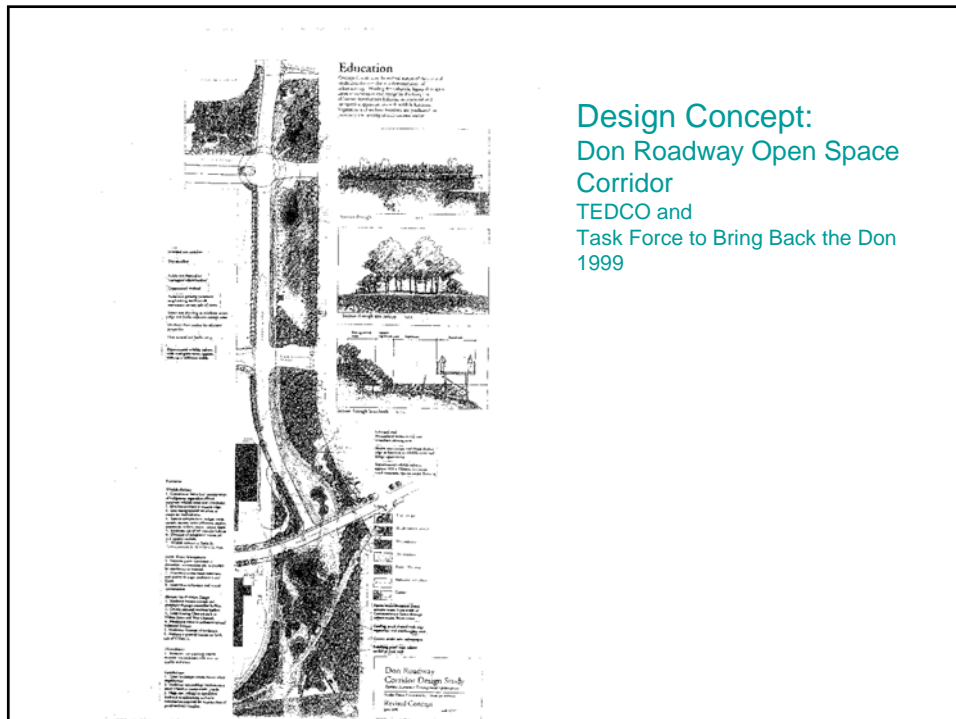
# Greening the Toronto Port Lands

Hough, Benson & Evenson

1997

## Green Infrastructure Functions

- Ambient air quality improvements
- Noise abatement
- Microclimate enhancement
- Stormwater management
- Soil & groundwater management
- Wildlife movement
- Wildlife habitat
- Sense of place
- Pedestrian/cycle trail
- Recreational opportunities



Design Concept:  
Don Roadway Open Space Corridor 1999  
TEDCO and “Bring Back the Don”

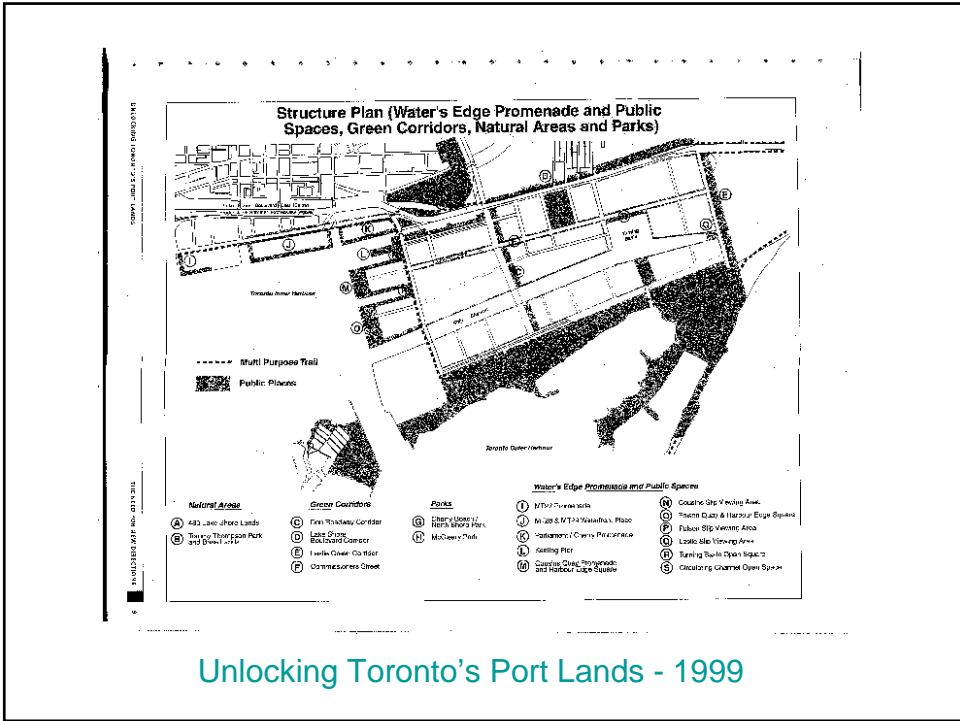
- “TEDCO’s Concept Plan for... the Port Area has shown a ‘green corridor’ along the east side of the Don Roadway since the mid 1980’s.” P.1
- Primary goal to achieve an urban wildlife corridor – a linear vegetated natural area.
- Seven objectives...

Design Concept:  
Don Roadway Open Space Corridor 1999  
TEDCO and “Bring Back the Don”

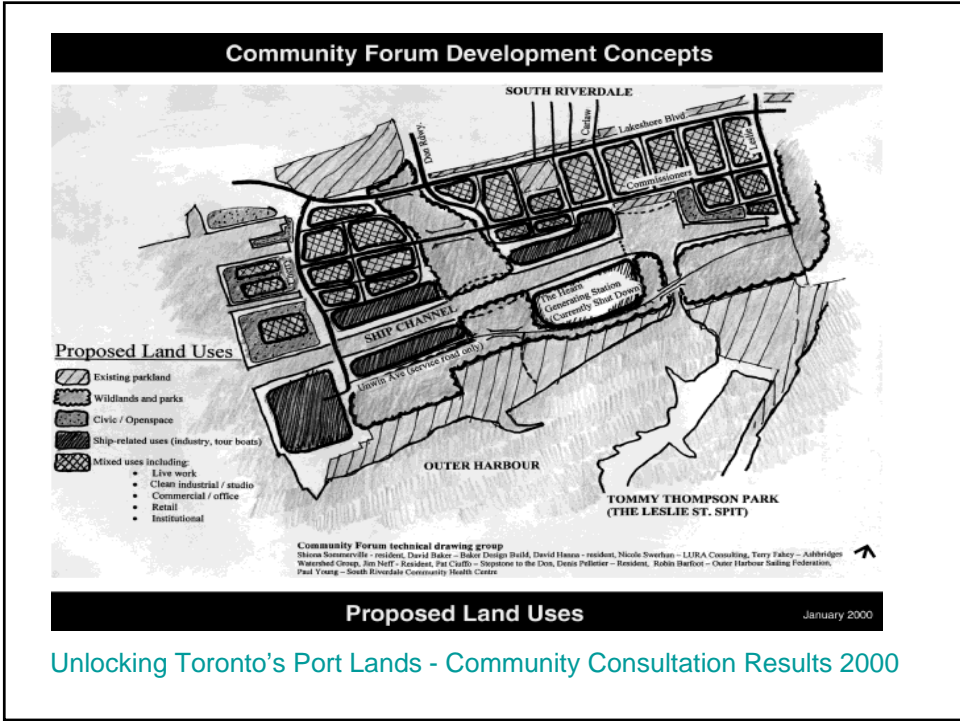
Don Roadway Open Space Corridor Objectives

1. Connect nodes of existing habitat
2. Reduce potential “sink effect” by maximizing linkage techniques
3. Provide a diversity of natural habitat for foraging and migrating wildlife
4. Discourage predators, parasites and invasives
5. Attract target species
6. Provide for recreational and educational/ demonstration opportunities
7. Enhance the overall perception and appearance of the Port Area.



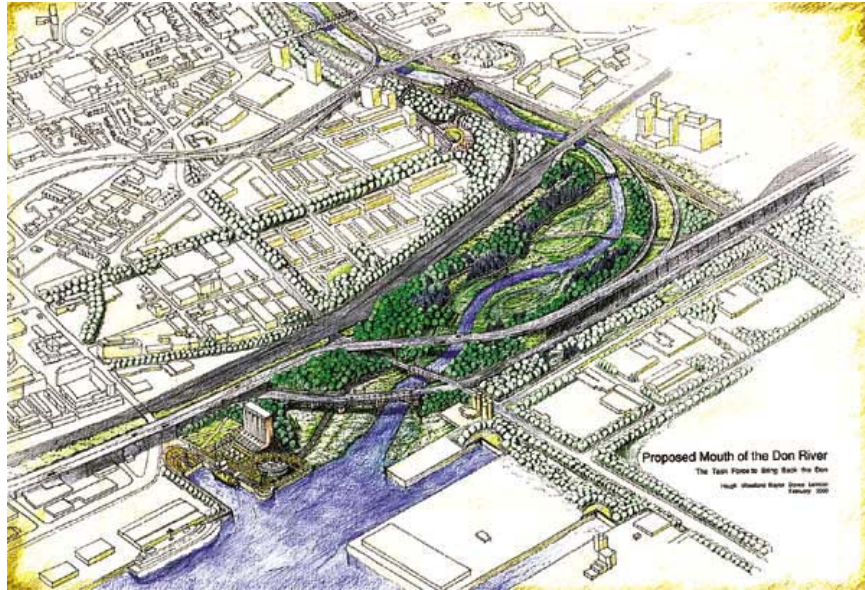


Unlocking Toronto's Port Lands - 1999



Unlocking Toronto's Port Lands - Community Consultation Results 2000

## Task Force to Bring Back the Don "Vision" - 2000



## Central Waterfront Public Space Framework – 2003 Waterfront Toronto



## Central Waterfront Public Space Framework – 2003

### Waterfront Toronto

“The Vision: A green spine serving as a connective place making a corridor between the Don Mouth and Lake Ontario Park and as a key structuring element for community space for emerging Portland neighbourhoods...

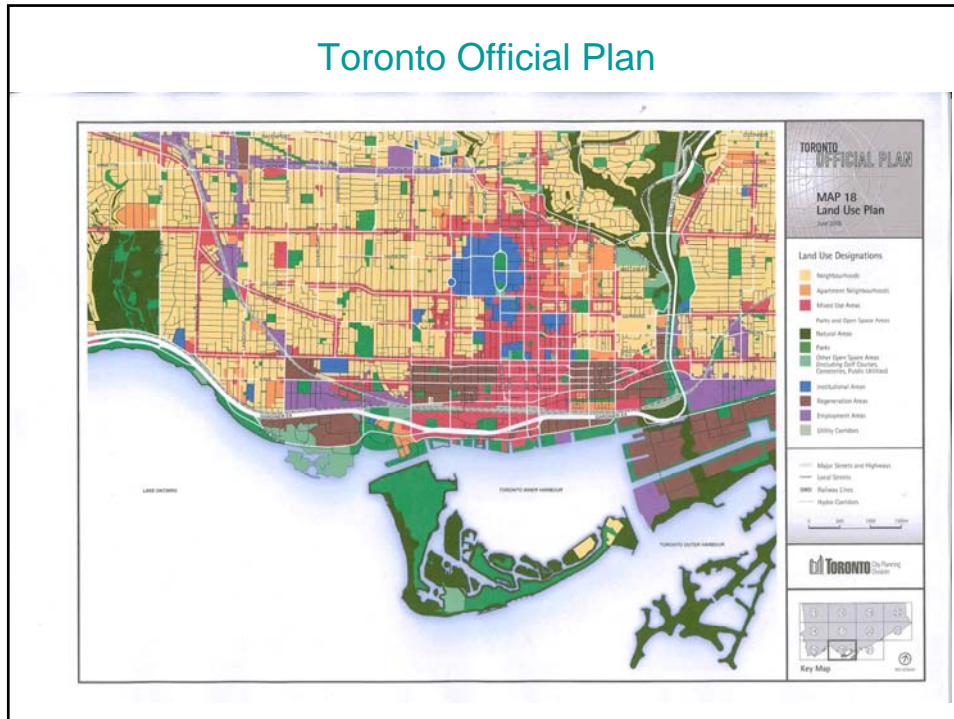
The Greenway will be functionally diverse and act as a habitat corridor, active and passive recreational space, trailway connector and as adjunct to community spaces.” (Panel 9)

## Port Lands Implementation Strategy – 2006

### Waterfront Toronto



## Toronto Official Plan

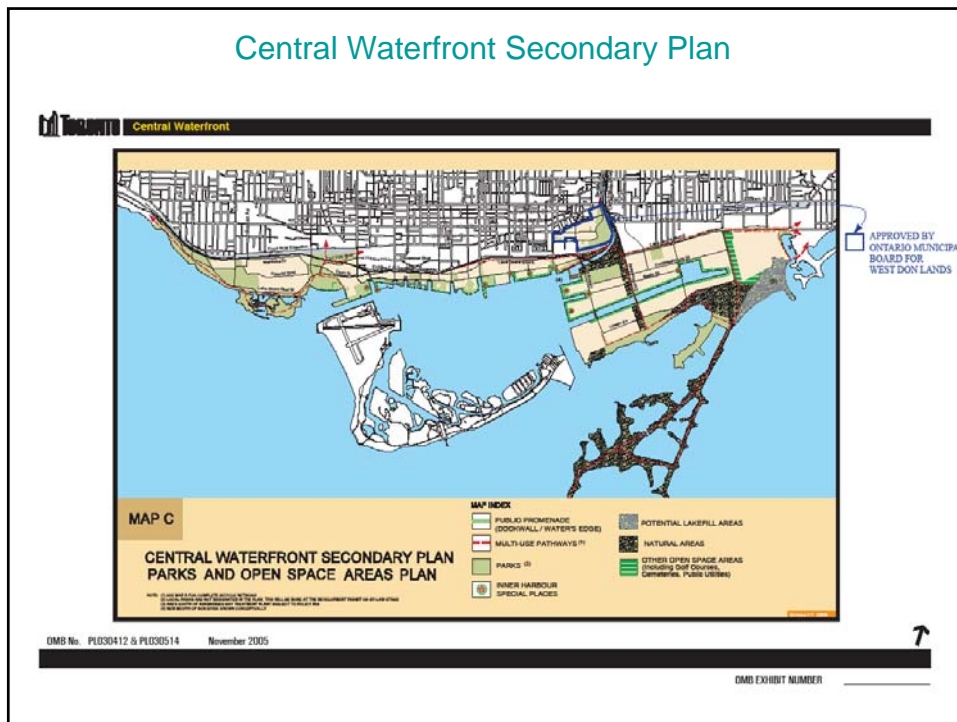


## Toronto Official Plan

### Policy 4.3.3 (Page 4-7)

- The areas shown as Natural Areas on Maps 13-23 will be maintained *primarily in a natural state*, while allowing for:
- a) *compatible recreational, cultural and educational uses and facilities that minimize adverse impacts on natural features and function; and*
- b) *conservation projects, public transit, public works and utilities for which no reasonable alternatives are available, and that are designed to have only minimal adverse impacts on natural features and functions.*

## Central Waterfront Secondary Plan



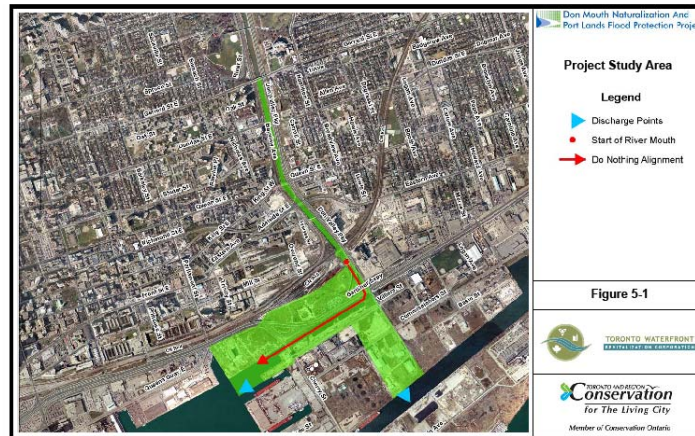
## Central Waterfront Secondary Plan

### THE DON GREENWAY, A NATURAL HERITAGE CORRIDOR

A new green, Natural Heritage corridor will be created in the centre of the Port Lands, functioning as an important **open space connection** linking the Don Valley, Tommy Thompson Park and Lake Ontario. The corridor will be a key component of the Centre for Creativity and Innovation offering a unique amenity attractive to knowledge-based industries of all types. In addition to providing local open space and **subject to its Natural Heritage designation in the Official Plan**, the corridor will be able to fulfill a variety of functions, including **neighbourhood recreation, compatible community uses, multi-use pathways, a wildlife corridor and habitat, and a receptor for stormwater from adjacent communities.**

# Don Mouth Naturalization and Port Lands Flood Protection Project

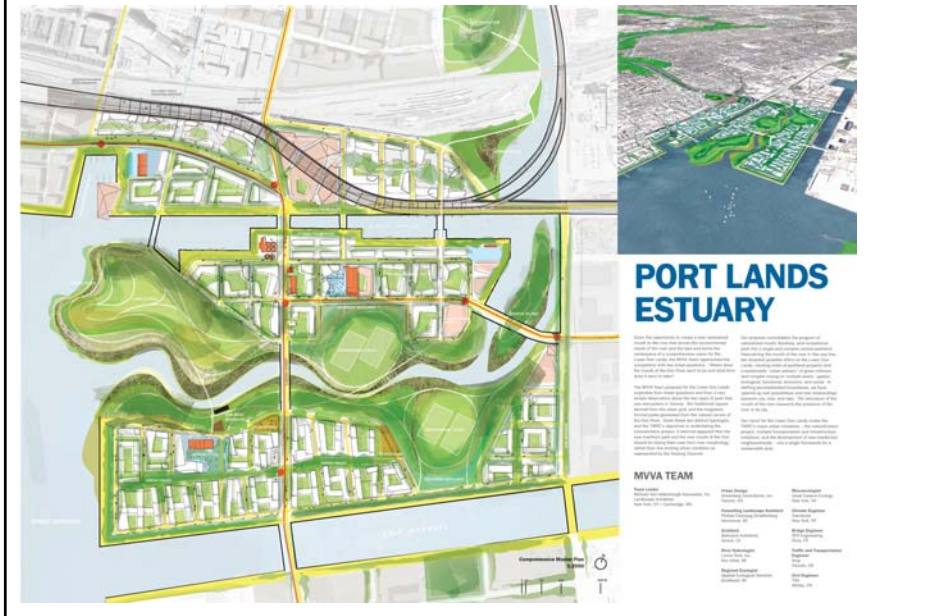
## Waterfront Toronto & TRCA 2006



# Michael Van Valkenburgh Associates Lower Don Lands Innovative Design



Michael Van Valkenburgh Associates  
Lower Don Lands Innovative Design



Don Greenway Workshop  
September 18, 2007

History of the Don Greenway Idea

John Wilson

Task Force to Bring Back the Don

416-926-1907 x 234

[jwilson@pollutionprobe.org](mailto:jwilson@pollutionprobe.org)