

APPENDIX 4. Don Mouth Naturalization and Port Lands Flood Protection Project and Environmental Assessment. Powerpoint Presentation by Paul Murray

Overview of Environmental Assessment

Alignment with Don Greenway



Background on EA

- EA commenced in August 2006 after approval of Terms of Reference (ToR)
- Addresses 3 key objectives

Naturalization



Revitalized City



Flood protection



Study Area



Alignment of Alternatives

- Four alternatives (discharge points) identified in ToR




- ToR defines alternative 4 (W and S) as having one primary channel and a regional flood overflow
- All alternatives from ToR consistent with Central Waterfront Secondary Plan

Alignment of Alternatives (cont'd)

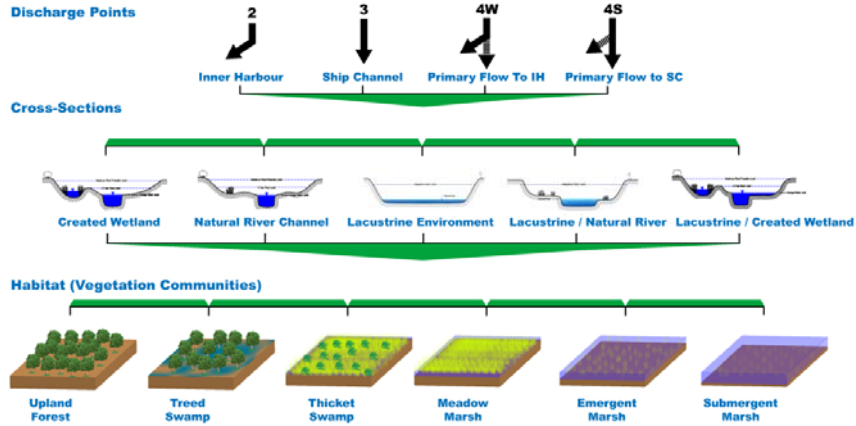
- For 3 and 4S:
 - Use of planned greenway as potential river mouth
 - Aligns linear corridor function of greenway with river mouth function
- 4W aligns greenway with overflow spillway



Overview of EA process

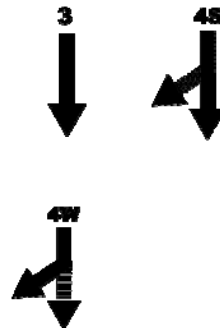
- Step 1 - Develop long list of alternatives
- Step 2 - Screen long list to identify short list of alternatives
- Step 3 - Describe short list of alternatives 
- Step 4 - Reduce the short list of alternatives
- Step 5 - Select preferred alternative

Step 1 Long List of Alternative Methods



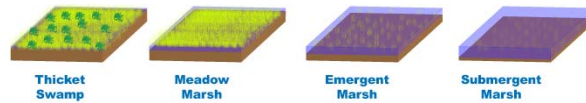
Step 2 – Flood Protection

- To convey Regulatory Flood, floodplain for primary channel 300 m wide
- Overflow spillway 200 – 300 m wide to convey Flood

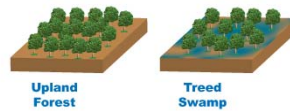


Step 2 - Naturalization

- For Alternative 3, vegetation communities that do not impede water flow include:



- Primary channel of Alternative 4S may also contain treed communities



Step 2 - Naturalization (cont'd)

- For alternative 4W, overflow spillway may include upland habitat types
- Opportunities for more naturalization closer to the lake based on lake levels



Alignment with the Greenway Naturalization

- Alternatives depict greenway as river mouth or overflow spillway
- Variety of wetland communities would be located within greenway

Alignment with the Greenway Public Use / Recreation

- Trail system could be located within greenway parallel to river mouth
- Greenway would be designed for compatible uses between flood events:
 - Walking / biking trails
 - Sports fields
 - Open space



Lower Don Lands Competition

- Undertaken by Waterfront Toronto from January to April 2007
- Great public interest and support
- MVVA design team chosen to integrate with DMNP EA team



Where we are going

- Revise study area to reflect larger area for integrated urban fabric with natural river mouth as the centrepiece
- Revise alternatives to reflect ideas and design elements emerging from competition
- Refine assessment of feasible alternatives
- Integrate urban fabric with naturalized river

Changes from Design Competition

- New alternative is variation of 4W,
with following attributes:
 - Primary channel to Inner Harbour
south of Keating Channel
 - Overflow spillways to Shipping
Channel and Keating Channel
- EA team is working with Waterfront
Toronto, the City and MVVA to
integrate new alternative into
existing evaluation framework



Integrating Workshop Comments

- Potential uses of greenway will be refined
based on outcome of workshop
- Will be integrated into short list of alternatives
during Step 3



**Don Mouth Naturalization And
Port Lands Flood Protection Project**

Timeline

Step	2006	2007	2008	2009	2010
Step 1 - Develop Long List	[Bar spanning early 2006 to mid-2007]				
Step 2 - Assess Technical Feasibility	[Bar spanning early 2006 to mid-2007]				
Step 3 - Refine Short List		[Bar spanning mid-2007 to early 2008]			
Step 4 - Reduce Short List		[Bar spanning mid-2007 to early 2008]			
Step 5 - Select Preferred Alternative		[Bar spanning mid-2007 to early 2008]			
Step 6 - Assess Preferred Alternative			[Bar spanning early 2008 to mid-2008]		
Step 7 - Develop Functional Design			[Bar spanning early 2008 to mid-2008]		
Implementation					[Arrow pointing right]

