



**WATERFRONT**Toronto

# Waterfront Toronto Annual General Meeting

October 29, 2008

# Overview

- **Year-in-Review**
  - West Don Lands
  - East Bayfront
  - Central Waterfront
  - Port Lands
  - Corporate Initiatives
- **Long-Term Plan**
- **Year-Ahead**
  - 2008/09 Priorities



2007/08

# Year-in-Review



# West Don Lands: Building a Neighbourhood



# Development Partner Announced

- Urban Capital/Redquartz Development first development partner
- 900 units
- \$250-300M investment
- Sales launch 2009
- Construction starts 2010



# Construction Activities



- Flood protection landform near complete
- Lower level inceptor system complete

# Other Key Projects

- Design of District Energy Centre
  - Centralized heating and cooling system
  - Construction starts 2009
  
- Cherry Street Streetcar Line
  - EA approved
  - Prioritizes pedestrians and transit users



# Other Key Projects

- Woonerfs
  - Pedestrian oriented, eliminating boundaries between sidewalk and street
- Public Art Master Plan
  - First community scale comprehensive art master plan in Canada
  - Contributes to the identity of the West Don Lands





# West Don Lands: Investment-to-date - \$72M

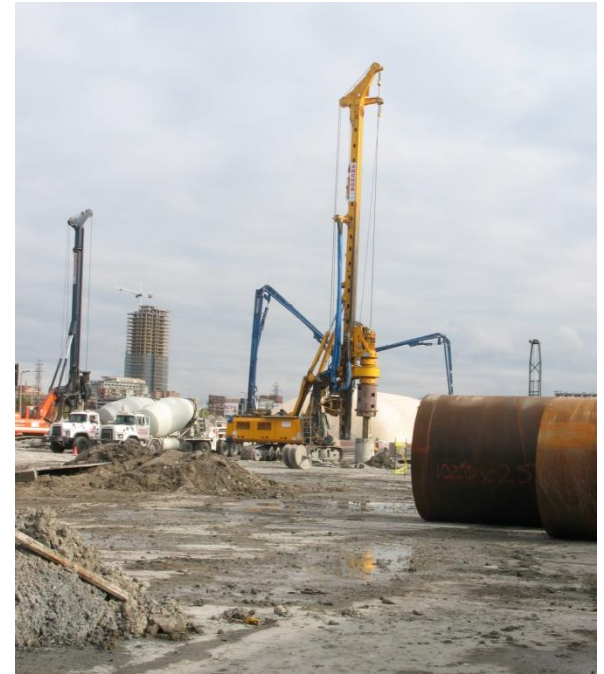


# East Bayfront: The Waterfront Jewel

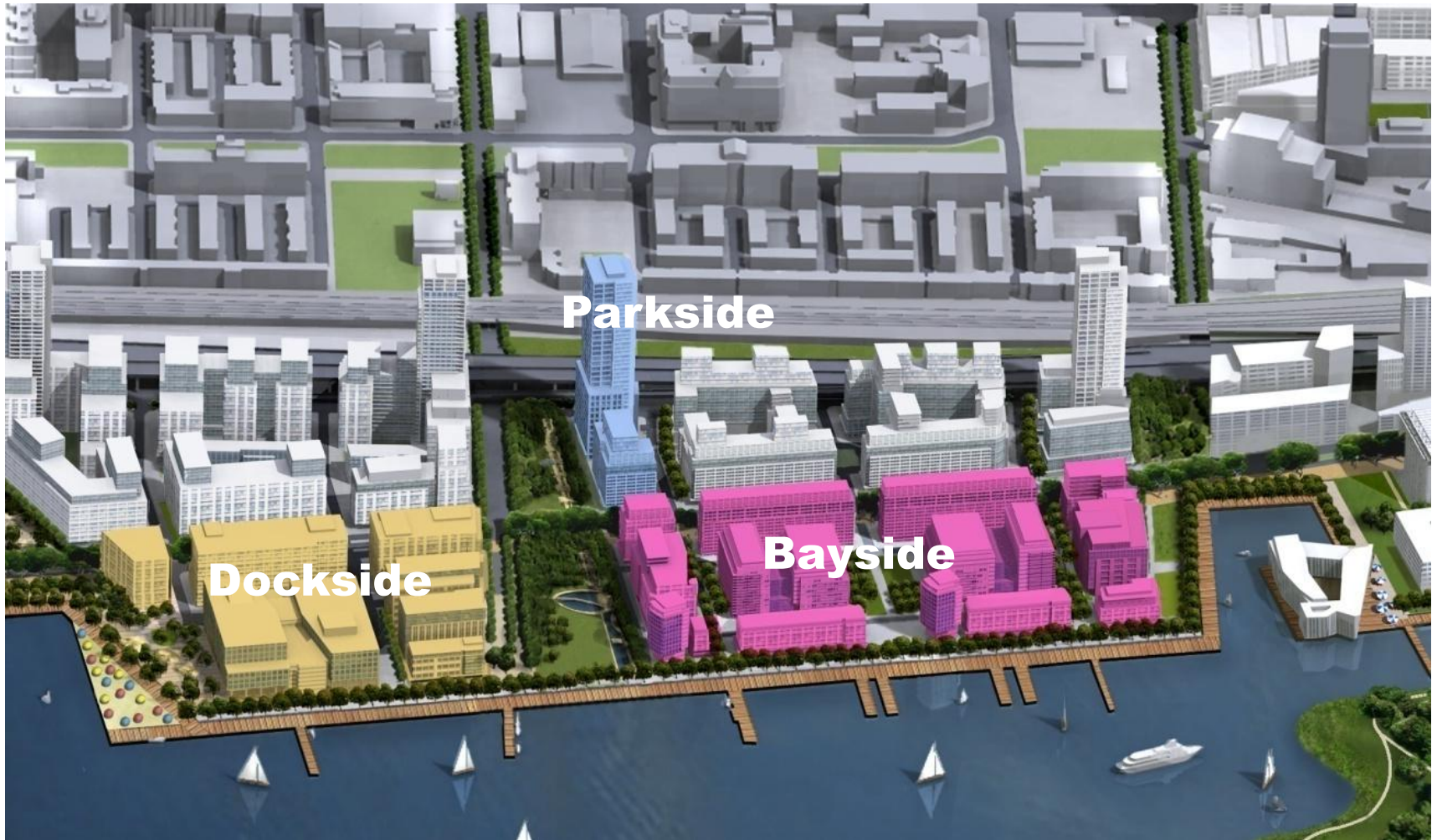


# Construction Activities

- Phase one municipal infrastructure work underway
- Construction continues on TEDCO's First Waterfront Place; occupancy 2010
- Site prep work underway for Sugar Beach and Sherbourne Park



# Developing East Bayfront



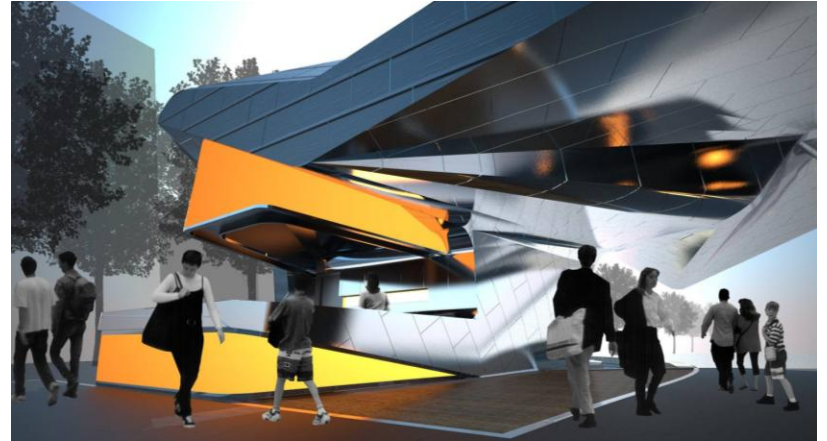
# George Brown College

- Provincial announcement in July
- College's Centre for Health Sciences
- Student residences/recreational complex
- Slated to open in 2012



# Sherbourne Park

- Design complete
- 1.5 hectare green space
- Year-round destination and public gathering place
- Construction starts 2009; complete 2010



# Sugar Beach

- Design competition
- Three distinct spaces
  - Urban beach
  - Water's edge promenade
  - Plaza space for events
- Construction starts 2009;  
complete 2010



# East Bayfront: Investment-to-date - \$57.1M





# East Bayfront Animation



# Giving Back the Lakefront: Central Waterfront

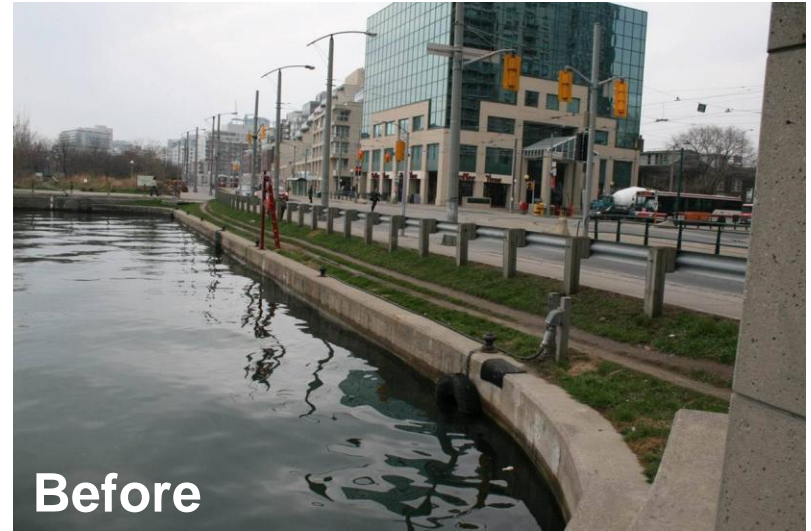


# Spadina WaveDeck

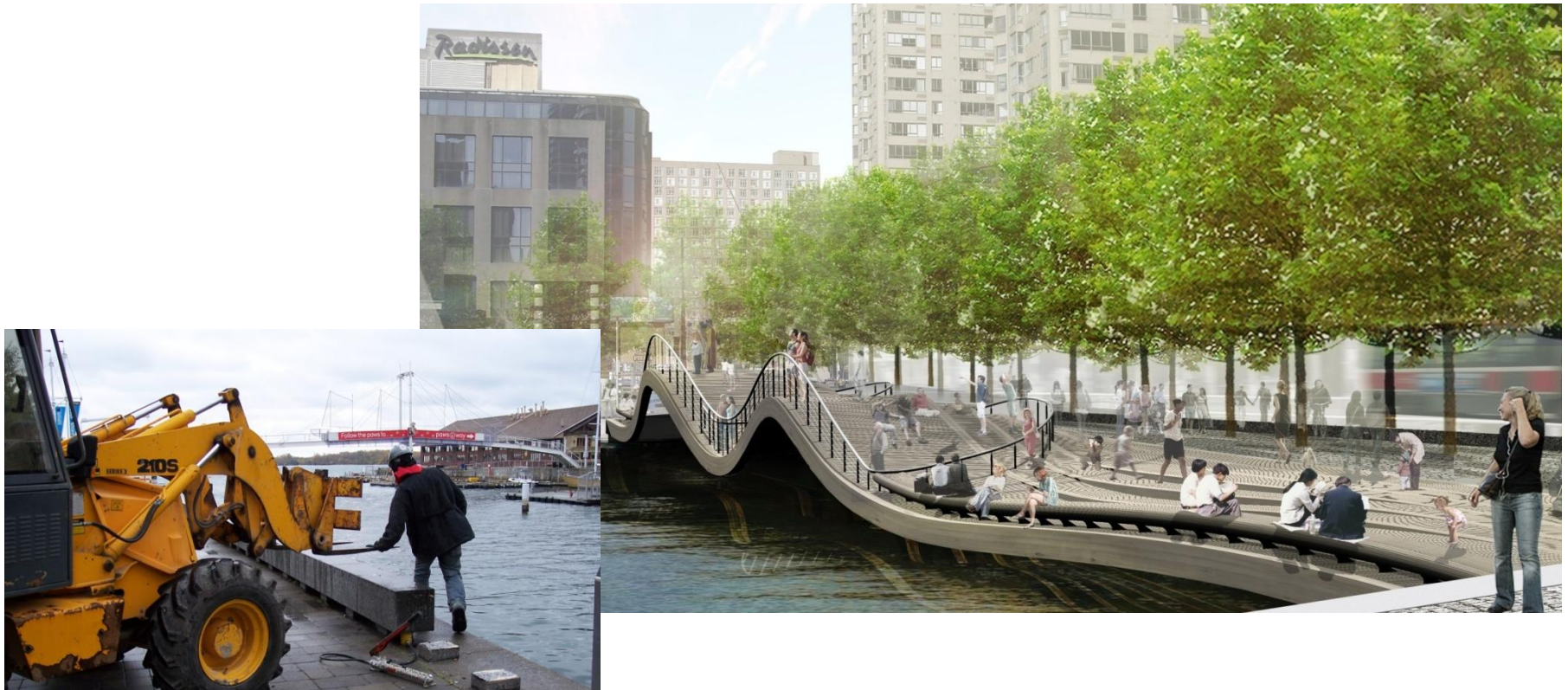
- Opened in September
- Unique new public space
- Aquatic habitat enhancement



# Spadina WaveDeck



# Rees and Simcoe WaveDecks



- Construction has started on Rees and Simcoe WaveDecks
- WaveDecks will be open summer 2009

# Central Waterfront: Investment-to-date - \$69M

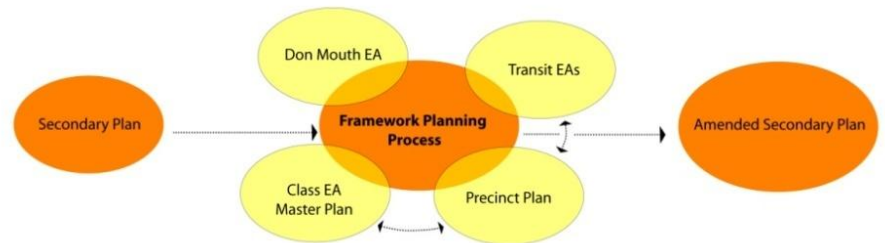


# Port Lands



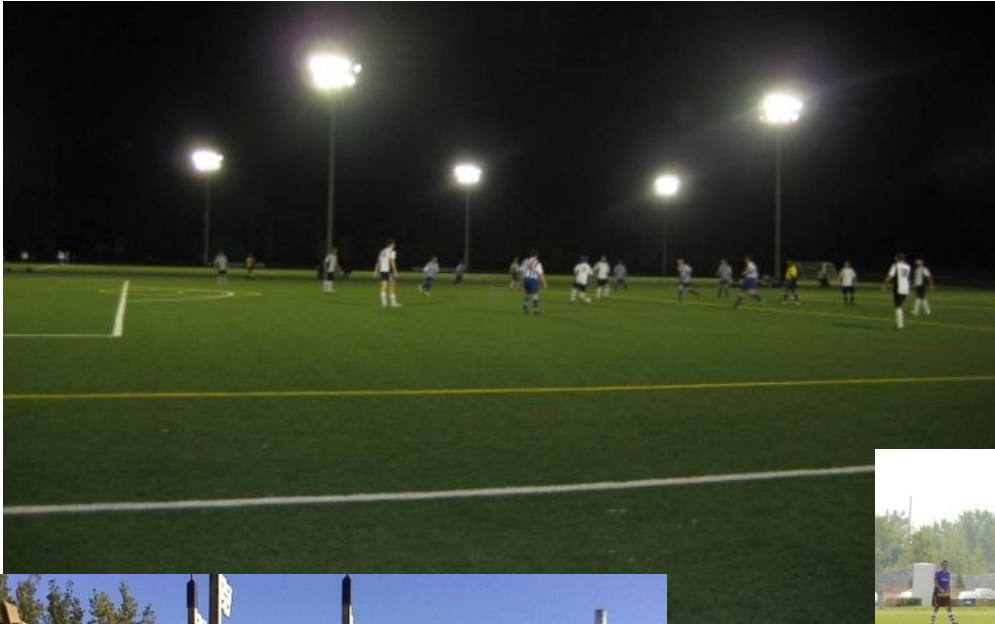
# Lower Don Lands

- Preferred alternative Don Mouth EA
- RAIC Sustainable development award





# Cherry Beach Sports Fields



# Lake Ontario Park

- Master Plan completed
- 375 hectare signature park for Toronto
- Urban wilderness, water sports, recreation and culture



# Port Lands: Investment-to-date - \$56M



# Corporate Initiatives



# Mimico Waterfront Park

- Phase one completed
- Board approved phase two



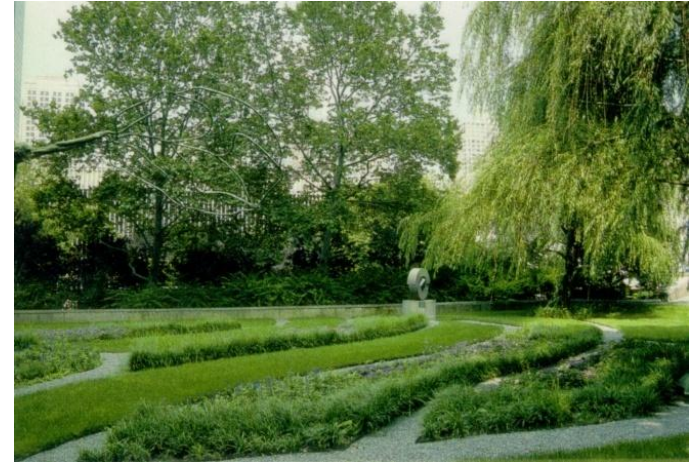
# Port Union Waterfront Park

- Phase two underway
- Scheduled to open in 2011



# Sustainability

- LEED for neighbourhood development

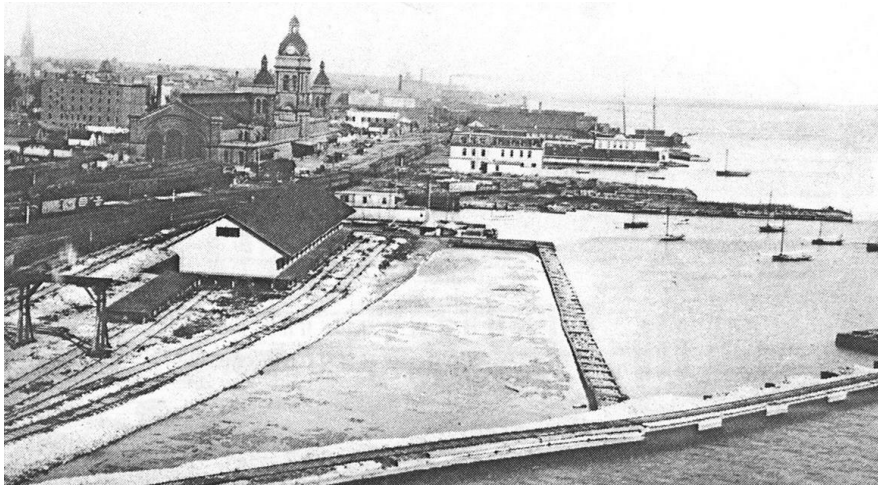


# Gardiner Environmental Assessment





# Archaeological Conservation & Management



# Long-Term Plan



# Year-Ahead: 2008/09 Priorities



# 2008/09 Corporate Projects and Initiatives

- Martin Goodman Trail at Ontario Place
- Gardiner-Lake Shore EA
- Ultra broadband
- District energy
- Governance provisions
- Financing program to support Long-term Plan



# 2008/09 West Don Lands

- River City sales launch
- Complete flood protection landform
- Launch construction:
  - Don River Park
  - TCHC affordable rental housing
  - District Energy Centre
  - Storm water management facility
  - Cherry Street LRT
  - Mill Street
  - Bayview Avenue



# 2008/09 East Bayfront

- Development partners Bayside and Parkside
- Municipal services construction
- Construction of Sherbourne Park and Sugar Beach
- Construction of George Brown College



# 2008/09 Central Waterfront

- Rees and Simcoe WaveDecks
- Spadina Bridge
- Design Peter, Rees, Police Basin and Simcoe bridges
- Design Portland Slip water's edge promenade



# 2008/09 Port Lands

- Keating Channel North Precinct Plan
- Lake Ontario Park Master Plan
- Phase one design for Lake Ontario Park
- Cherry Street and Commissioners Street intersection
- Phase two Leslie Street greening





# 2008/09 Sustainability

- Carbon Footprint Analysis
- Environmental Management Action Plan
- Identify leading edge technologies – beyond LEED gold
- Soil management and ground water master plans
- Soil management facility



# Thank You

- Shareholders – Federal, Provincial and Municipal governments and their waterfront staff
- Community Stakeholders
- Partners – Toronto and Region Conservation, Ontario Realty Corp., Toronto Economic Development Corp., Toronto Port Authority, Toronto Community Housing, Toronto Transit Commission and Harbourfront Centre
- Waterfront Toronto team: Board members, staff, consultants and design review panel

# Year-in-Review Video



# Questions & Answers

