



ASHBRIDGES BAY EROSION AND SEDIMENT CONTROL CLASS ENVIRONMENTAL ASSESSMENT





Ashbridges Bay Erosion and Sediment Control Project

TRCA, in partnership with the City of Toronto, will be leading a Conservation Ontario Class Environmental Assessment (EA) to address erosion and sediment control issues at Ashbridges Bay

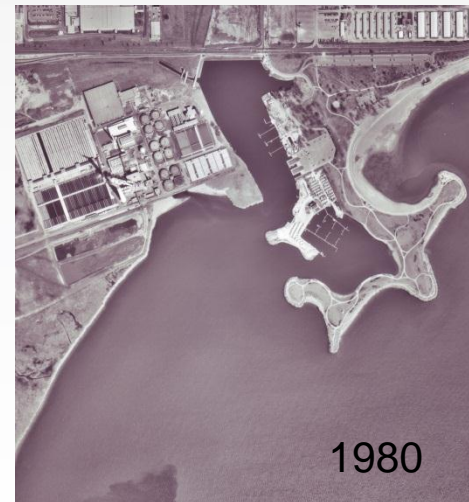
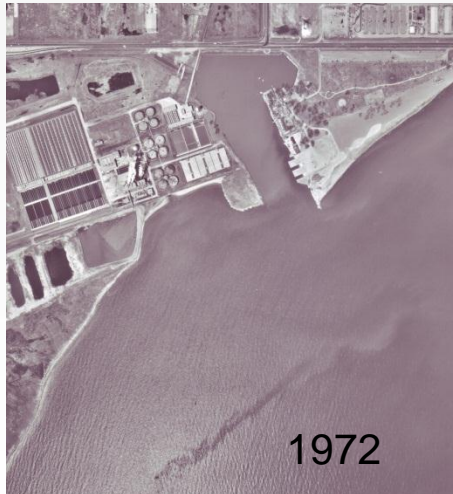
The purpose of the EA will be to *“Identify a preferred solution that will mitigate the risk to navigation due to sediment erosion and deposition at the harbour entrance of Ashbridges Bay and Coatsworth Cut while considering approved projects and waterfront planning initiatives in the area.”*

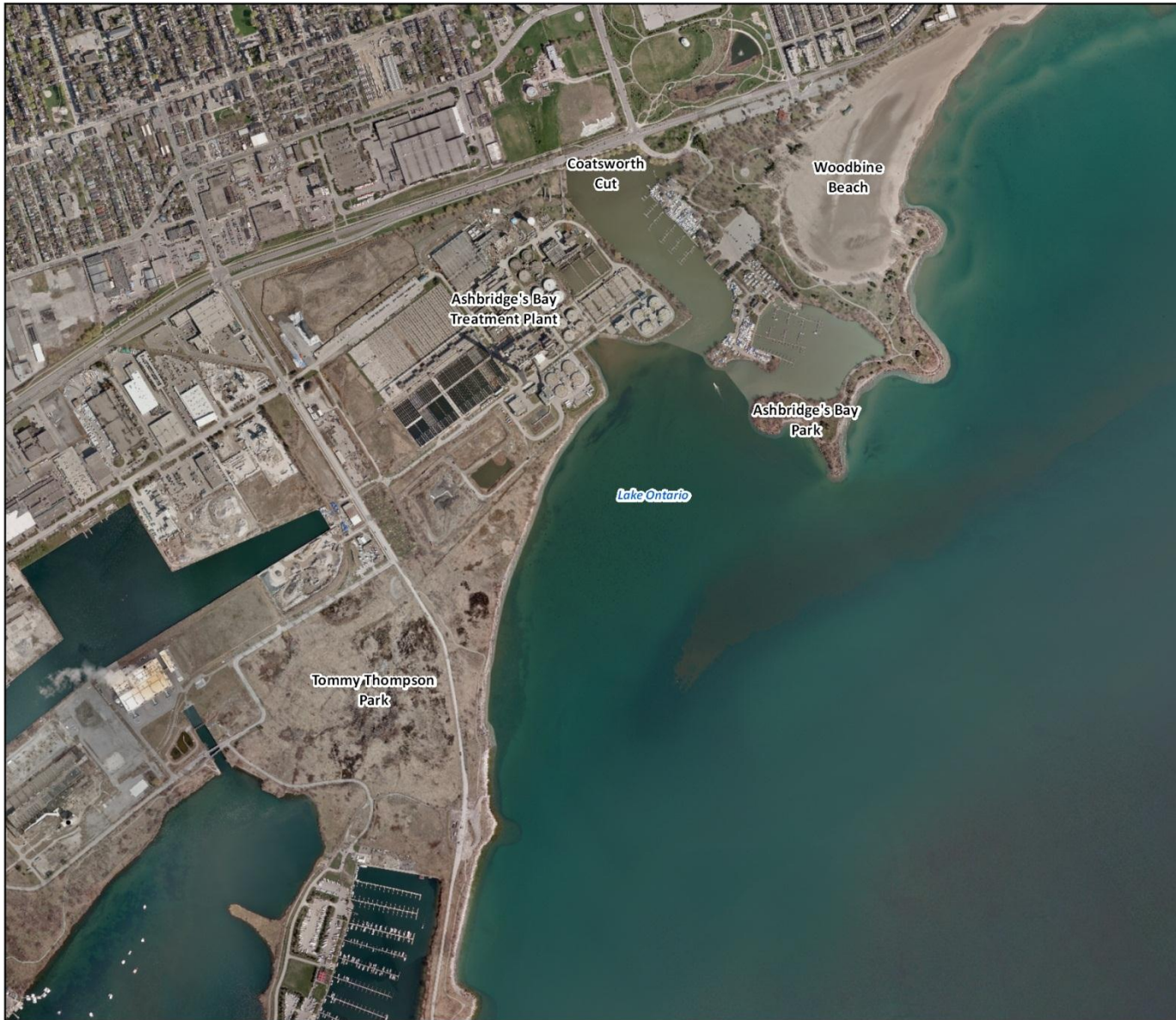




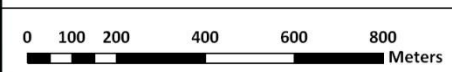
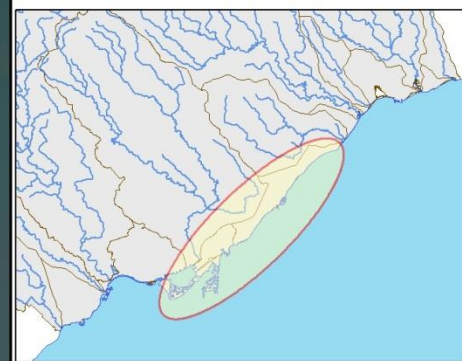
Problem Identification

- Mid-1970's: Ashbridge's Bay Park constructed
- Early 1980's: Start of dredging in Coatsworth Cut
- 1990's: Reports by Sandwell (1991) & Baird (1999) indicate ~10,000 m³ of sand per year bypass the Ashbridge's Bay Park headland
- Dredging volumes and costs have increased throughout the 1990s. In 2012 \$210,250 was spent to remove 3,000 cubic meters of sediment. Annual maintenance dredging is needed to ensure safe navigation.





Ashbridge's Bay: Environmental Assessment Regional and Local Study Areas



1:10,000

Date: December 2012
Created By: IS/IT
Orthophoto: Spring 2011, First Base Solutions Inc.

Disclaimer:
The Data used to create this map was compiled from a variety of sources & dates. The T.R.C.A. takes no responsibility for errors or omissions in the data and retains the right to make changes & corrections at anytime without notice. For further information about the data on this map, please contact the T.R.C.A. GIS Department. (416) 661-6600

Produced by Toronto and Region Conservation Authority
under Licence with the Ministry of Natural Resources
© Queen's Printer for Ontario, 2012



Timeline: Environmental Assessments and other Planning Initiatives in Area

- 2002: TRCA initiates Class EA to address sediment and erosion issues
- 2004: TRCA suspends Class EA while a number of other planning initiatives in the area were completed
- 2008: Toronto Water completes Coatsworth Cut Class EA and Waterfront Toronto completes Lake Ontario Park Master Plan
- 2008: Ashbridge's Bay Treatment Plant Individual EA approved
- 2009: TRCA recommences Class EA and explores the potential relocation of boat clubs in Coatsworth Cut
- 2009: Waterfront Toronto and City of Toronto suspend Class EA – projected cost estimated at \$20 - \$40 million which exceeded available budget
- 2012: Don River and Central Waterfront Class EA completed



2013 Class EA Scope Considerations

- Approved facilities associated with the Don River and Central Waterfront EA, Coatsworth Cut CSO and Outfall EA and Ashbridge's Bay Treatment Plant EA
- Objectives of the Lake Ontario Park Master Plan and Tommy Thompson Park Master Plan
- Reflect shoreline and habitat recommendations as outlined in the Toronto Waterfront Aquatic Habitat Restoration Strategy and TRCA's Terrestrial Natural Heritage Strategy

The 2013 Class EA study will not include:

- Any further exploration of the relocation of boat clubs in Coatsworth Cut



Example of 2009 Alternatives Explored



Alternative 2C
(2009)

*Included for
illustration
purposes only*



Process and How to Get Involved

- A Conservation Ontario Class EA is being initiated (April 2013)
- A Community Liaison Committee will be established and a minimum of two Public Information Centers (PICs) will be held throughout the EA process (Spring 2013 and Fall 2013)
- Once the Class EA is approved, the City of Toronto and TRCA will work in cooperation to develop a detailed design for a landform to accommodate the approved EAs (early 2014) in the local area with consideration to other waterfront planning initiatives. The CLC will remain active and public input will be requested through additional PICs.





Contact

Visit: www.trca.on.ca/ashbridgesbayproject_ea
for on-going updates on the project status and information on upcoming Public
Information Centers

Project contact:
Lisa Turnbull, Project Manager II
Toronto and Region Conservation Authority
lturnbull@trca.on.ca
416-661-6600 ext. 5645



Longnose Gar at Ashbridge's Bay, 2008