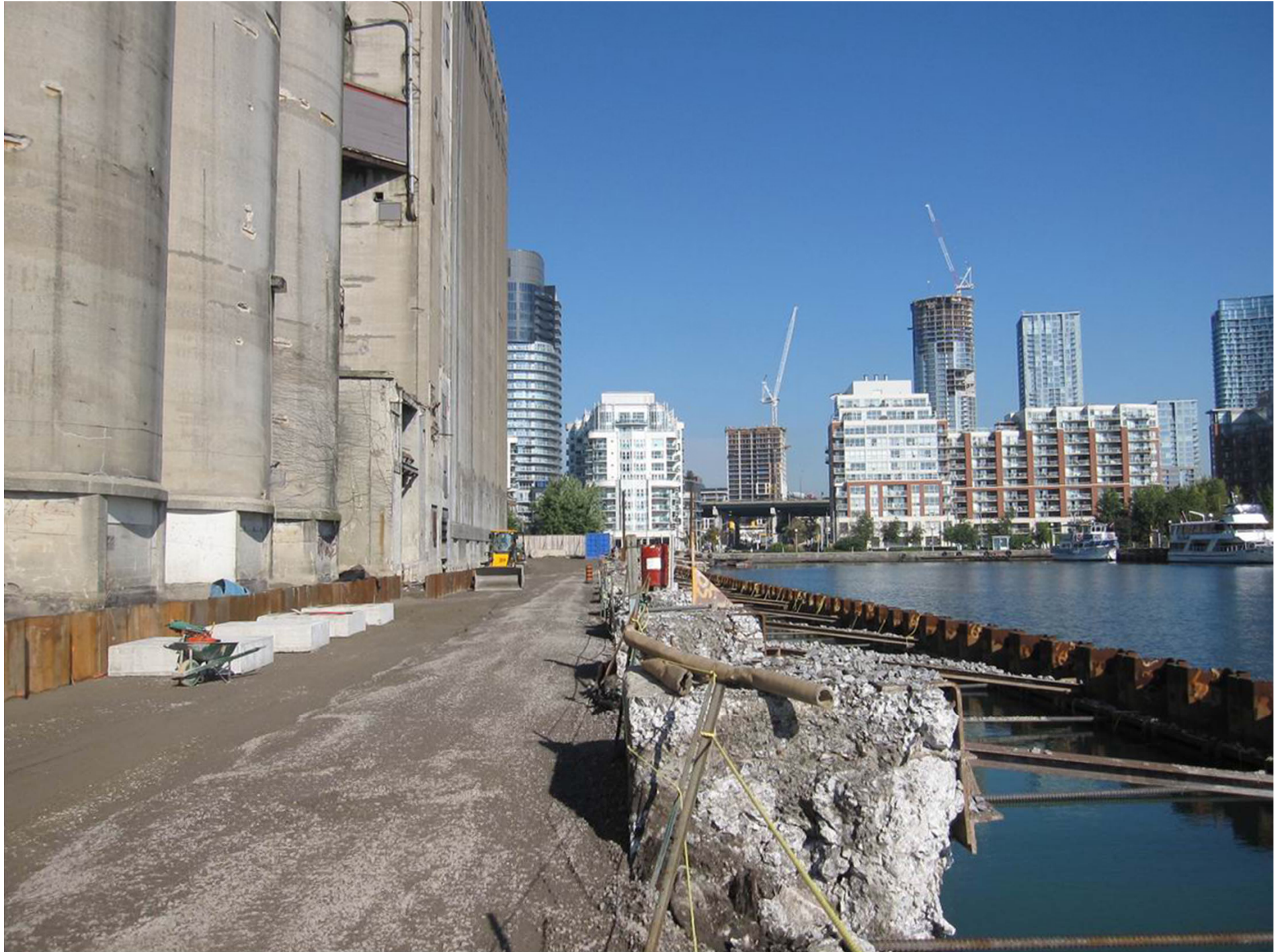




27/09/2011



27/09/2011









































Honk if you want  
to save on gas  
Instant Fuel Savings.ca

EASTERN

















Waterfront Toronto Interactive Kiosk @ Brookfield Place



Neighbourhoods Go Green Exhibit @ Royal Bank Plaza

## BUILDING A GREENER TORONTO WATERFRONT

Waterfront Toronto is raising the bar for sustainable development and working to ensure that Toronto's waterfront is a global model for sustainability. The revitalization of Toronto's waterfront will transform 80 hectares (2000 acres) of brownfield lands into beautiful, livable, sustainable communities. All new waterfront neighbourhoods are being designed and built to promote green and healthy living and the conservation of the environment and natural resources. Waterfront Toronto's approach to sustainable development is guided by comprehensive Sustainability Framework, Minimum Green Building Requirements and participation in the Climate Change Incentive—Climate Change Development Program.

To learn more about the revitalization of Toronto's waterfront, visit [www.waterfronttoronto.ca](http://www.waterfronttoronto.ca)

The revitalization of Toronto's waterfront presents an unprecedented opportunity to change the face of Toronto while simultaneously redefining how communities and buildings are being built.

Waterfront Toronto is the public steward responsible for leading the renewal of Toronto's waterfront. Public accessibility, design excellence, sustainable development, economic development and fiscal sustainability are the key drivers of waterfront revitalization.



Sherbourne Common is the first park in Canada to integrate an ultraviolet facility for neighbourhood-wide storm and lake water treatment into its design. Waterfront Toronto

### Toronto's Waterfront Neighbourhoods

The first waterfront neighbourhoods under development are East Bayfront, West Don Lands and North Keating, which have achieved Stage 1 LEED-ND Gold certification. New waterfront communities will offer a range of housing types, energy efficient buildings, ample parks and public spaces, smart and innovative infrastructure, transit within a five minute walk of residences and priority for cyclists and pedestrians, on-site renewable energy and water and energy conservation.

## What is the Greater Golden Horseshoe Challenge?

It is a campaign aimed at local and regional municipalities, provincial and federal government representatives, and the development community, to raise awareness about the importance of sustainable urban design and planning, and the LEED for Neighbourhood Development criteria.

It is a call to action to complete at least one LEED for Neighbourhood Development project in each of the municipalities and counties in the Greater Golden Horseshoe over the next five years.

It is a challenge to local leaders to integrate sustainable neighbourhood design policy throughout all levels of government, and assume an international leadership role.

For more information about the Greater Golden Horseshoe Challenge, please contact [nd@cgbc.org](mailto:nd@cgbc.org).

# NEIGHBOURHOODS GO GREEN!

## SCALING UP SUSTAINABILITY

By thinking on a larger scale, we can reorganize the places where we live and work. This will dramatically reduce the impact of our lives on our neighbourhoods—and on planet Earth.

The U.S. Green Building Council, working in collaboration with architects, urban planners, builders, and environmentalists, has developed a national design standard for certifying green neighbourhoods. It is called LEED (Leadership in Energy and Environmental Design) for Neighbourhood Development.

This exhibition explores the design and certification of green communities.

Generous support for Neighbourhoods Go Green! provided by:

Challenge Supporter: WATERFRONTToronto

Exhibit Sponsors: DOCKSIDE GREEN, POINTE NORD, OXFORD

Venue Sponsor: DVA, The Planning Partnership

Curated by: The Chicago Architecture Foundation with the U.S. Green Building Council and Fair Associates

Toronto Exhibition Project Team: Selma Holmes, Cheri Joseph, Sophie Lambert, Sam Lewis, Jeffrey Lovelink, and Jody Maffett



Canada's Sugar Beach



Sherbourne Common



Water's Edge Promenade @ Corus Quay



Water's Edge Promenade @ York Quay





Mimico Waterfront Park – Phase 1