

Hanlan Boat Club

Waterfront Toronto Design Review Panel

Stage 1

Issues Identification / Site Analysis / Program

Hanlan Snapshot



Current Facilities



Current Facilities



Our Design Objectives

This new facility should be;

- On our current site
- Achievable, quickly
- Economical
- Consolidating and expanding storage in one structure

Site Analysis



Access to Site

TTC

- Clarke Beach Park, 172B Cherry Street bus
- 500m from club

Pedestrian/Bike

- Toronto Waterfront Trail within metres

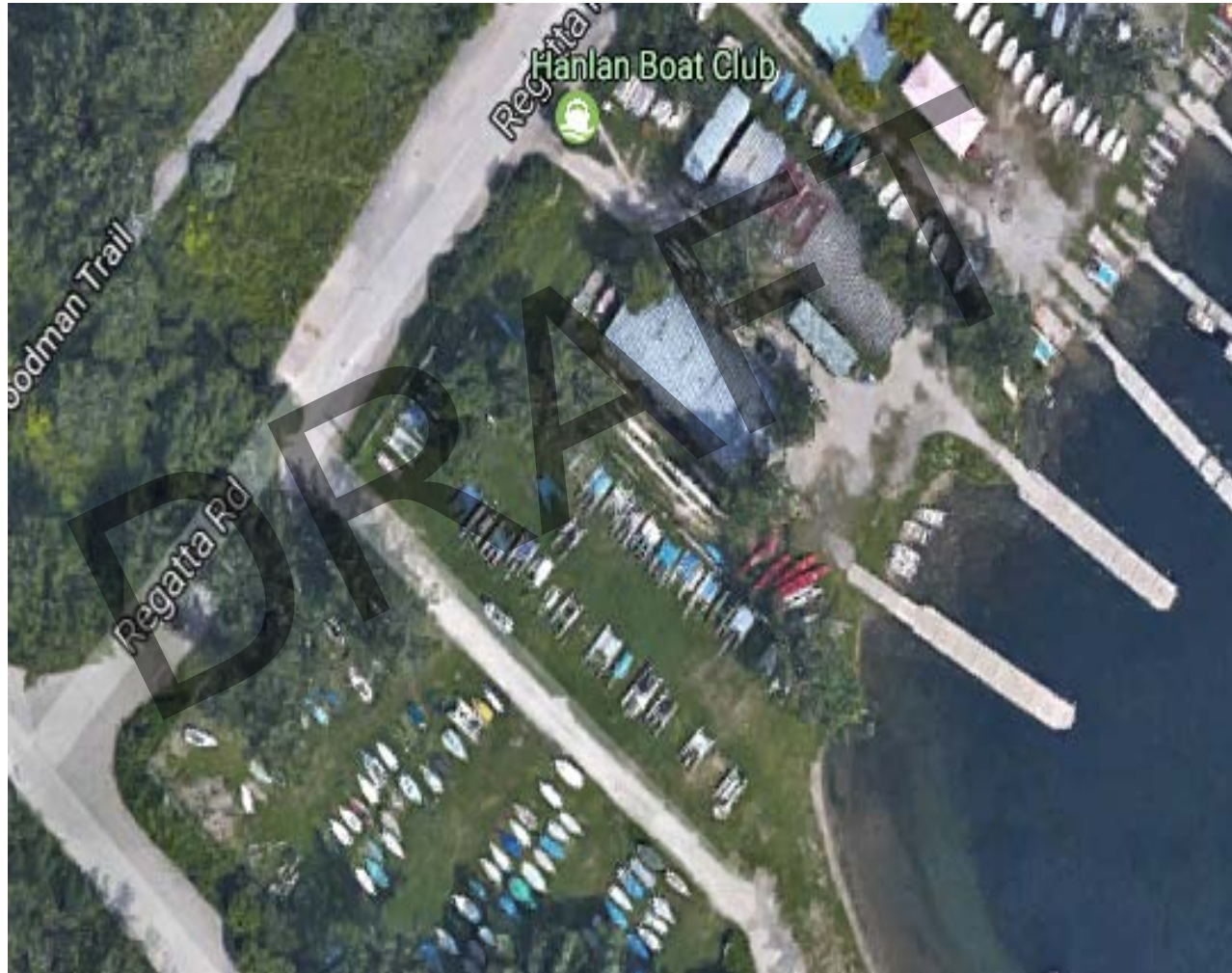
Auto

- Parking at club

Site Analysis

- Borders: Regatta Road (north), sailing clubs (east and west), and Lake Ontario (south)
- Area: 35,700 square feet (landfill)
- 2 Quonset huts, various additional structures
- Two docks (removable)
- Relatively flat grade with minor descent to water
- Grass and gravel cover; poplar trees

Top Down View



An Active Site



Opportunities / Constraints

Opportunities:

- Increased capacity
- Improved efficiency and operations
- Better use of volunteer effort
- Better presentation

Constraints

- Fixed site boundaries
- Poor-quality soil
- Seasonal
- No water service

Proposed Program

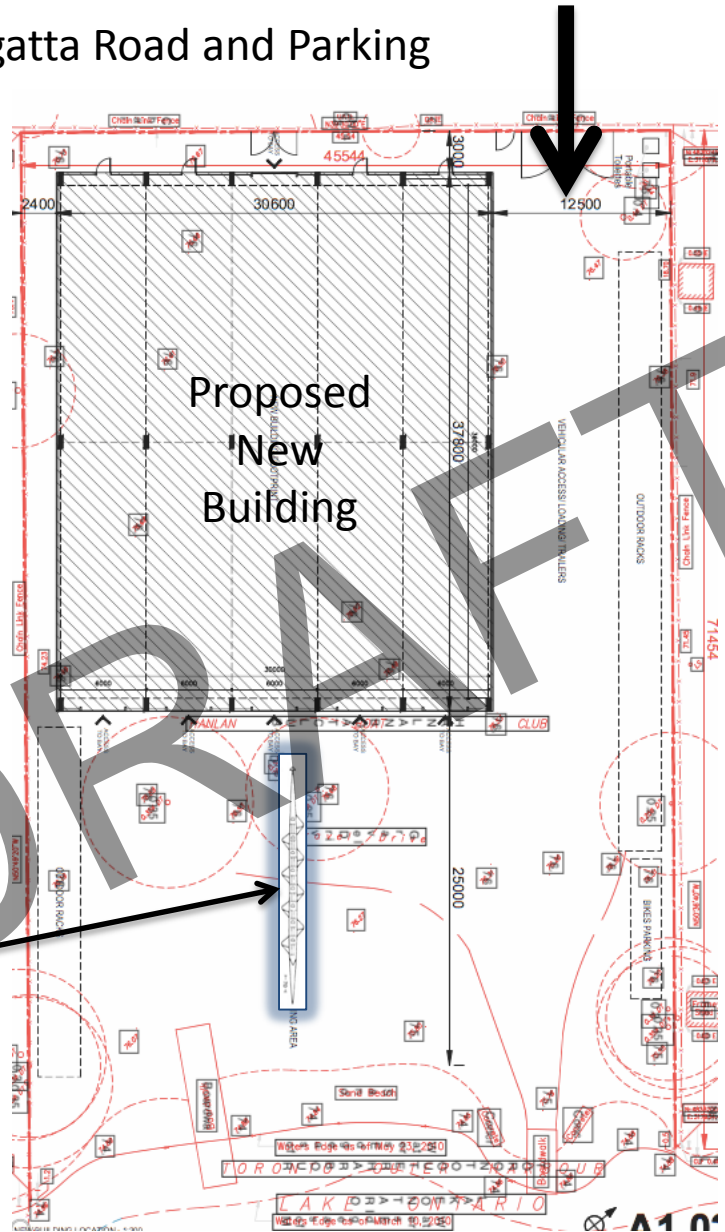
- Ideal dimensions:
 - 118 ft x 98 ft
 - 12,600 square ft
 - Up to 22 ft tall (current buildings 19ft)
- 5 boat bays
- Lightweight greenhouse-type structure
- Floating foundation

Diagram

Regatta Road and Parking

Access for trailers, cranes, bicycles, pedestrians

Rowing Eights approx. 20m. Need room to maneuver!



Lake Ontario

Aerial View



Pedestrian View



Current Pedestrian View



Sustainability

Included Minimum Green Building Requirements

- Limited/no water use
- Limited energy use
- Clear polycarbonate for natural lighting
- Project materials 100% recyclable
- Ample bicycle parking