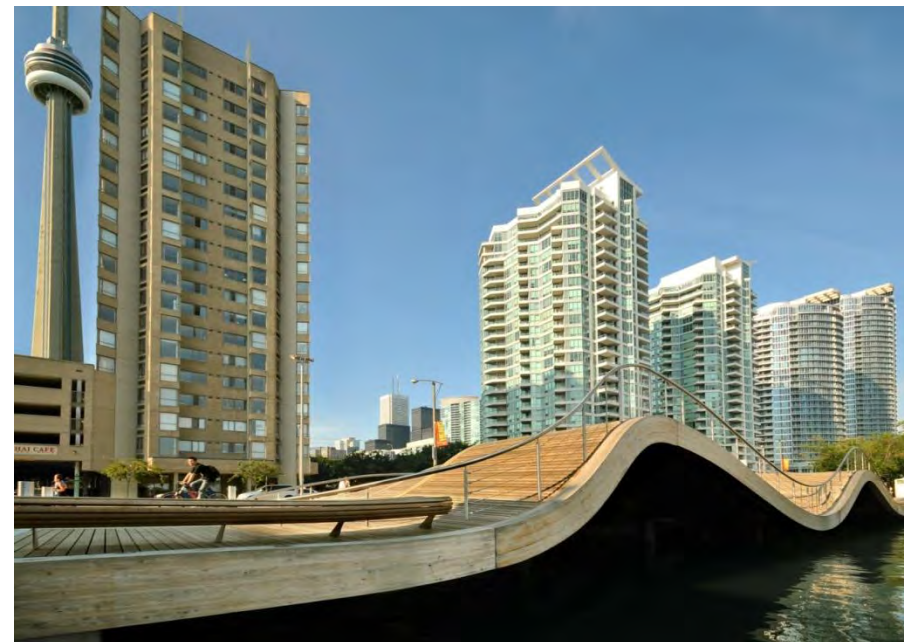


Waterfront Toronto

Waterfront Toronto's revitalization efforts go well beyond merely redeveloping the lakefront and will fulfill a broad public policy agenda, including:

- Reduce urban sprawl
- Develop sustainable communities
- Build more affordable housing
- Create more parks and public spaces
- Expand public transit
- Increase economic competitiveness



Waterfront Toronto



- The 800 hectare (2,000 acre) designated waterfront area runs from Dowling Avenue in the west to Coxwell Avenue in the east.
- The area is roughly equal in size to Toronto's major downtown core from Bathurst Street to Sherbourne Street and Front Street to Bloor Street.
- The project includes the creation of 40,000 residential units, one million square metres of employment space and 300 hectares of parks and public spaces.





Storm and Sanitary sewer upgrades



Project Background

Waterfront Toronto conducted a Class Environmental Assessment (EA) for construction of new sanitary and storm sewers to service proposed re-development within the East Bayfront Precinct.

The existing sewers do not have sufficient capacity to meet the servicing requirements of the ultimate build-out of East Bayfront.

Project Background (continued)

The purpose of this project is to provide sustainable servicing for East Bayfront while minimizing disruption to the public.

The proposed sanitary sewers will extend outside of the East Bayfront Precinct, ultimately conveying the wastewater flows to the City of Toronto's Scott Street Sewage Pumping Station, located at the intersection of Scott Street and The Esplanade.

The proposed storm sewers will be constructed within the East Bayfront Precinct, along Queens Quay East.

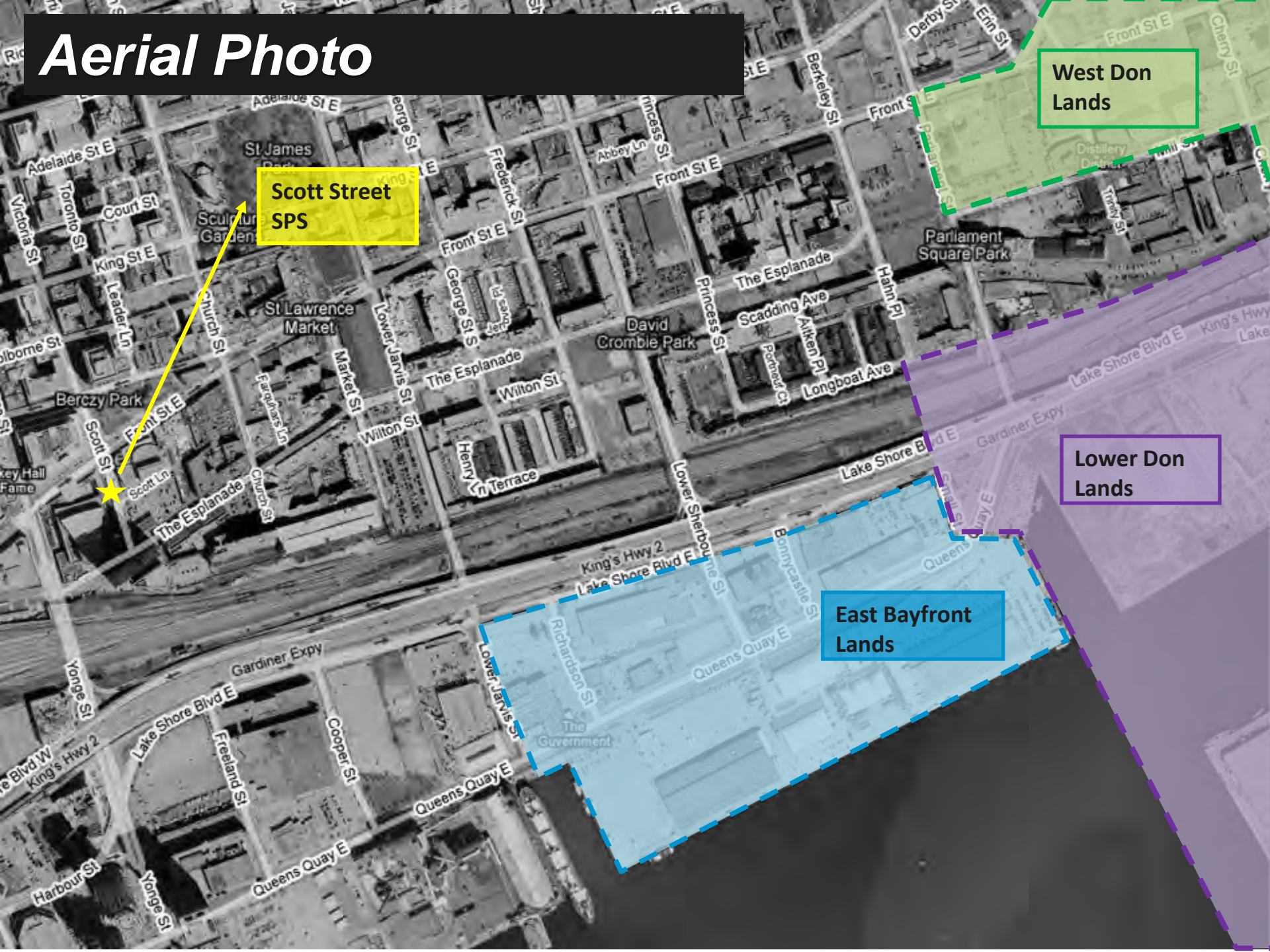
The primary need to construct these sewers now is for the opening of the new George Brown College in East Bayfront.

Process

The Municipal Class Environmental Assessment (“Class EA”) process (amended October 2007) is approved under the Ontario Environmental Assessment Act and allows municipalities to follow a Class EA process when undertaking municipal infrastructure projects.

This sanitary sewer construction project is being carried out as a Schedule A+ undertaking. This project is therefore pre-approved under the Class EA by the Ministry of the Environment and the project can be implemented upon public notification of the project.

Aerial Photo



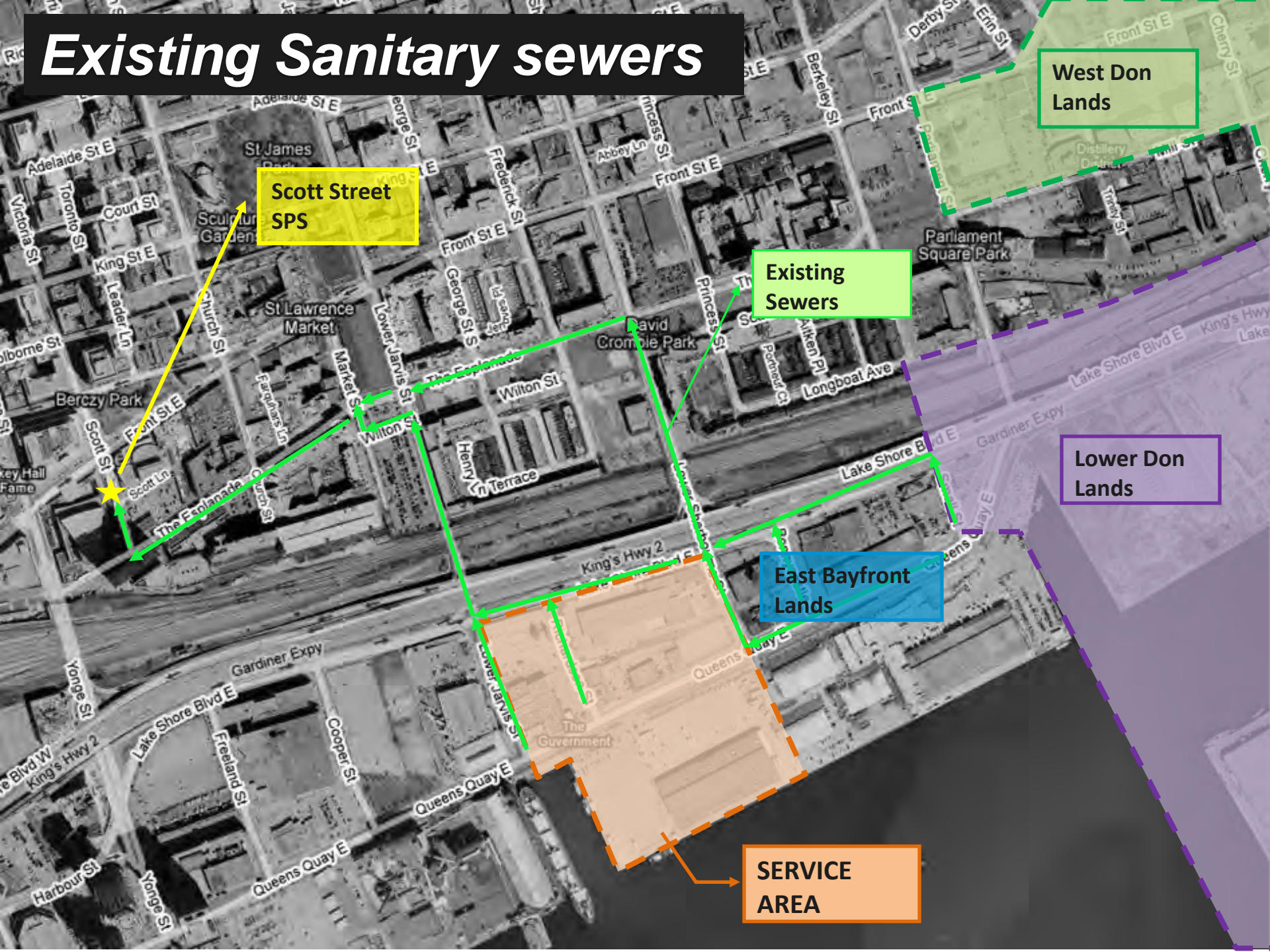
West Don Lands

Scott Street SPS

Lower Don Lands

East Bayfront Lands

Existing Sanitary sewers



West Don Lands

Scott Street SPS

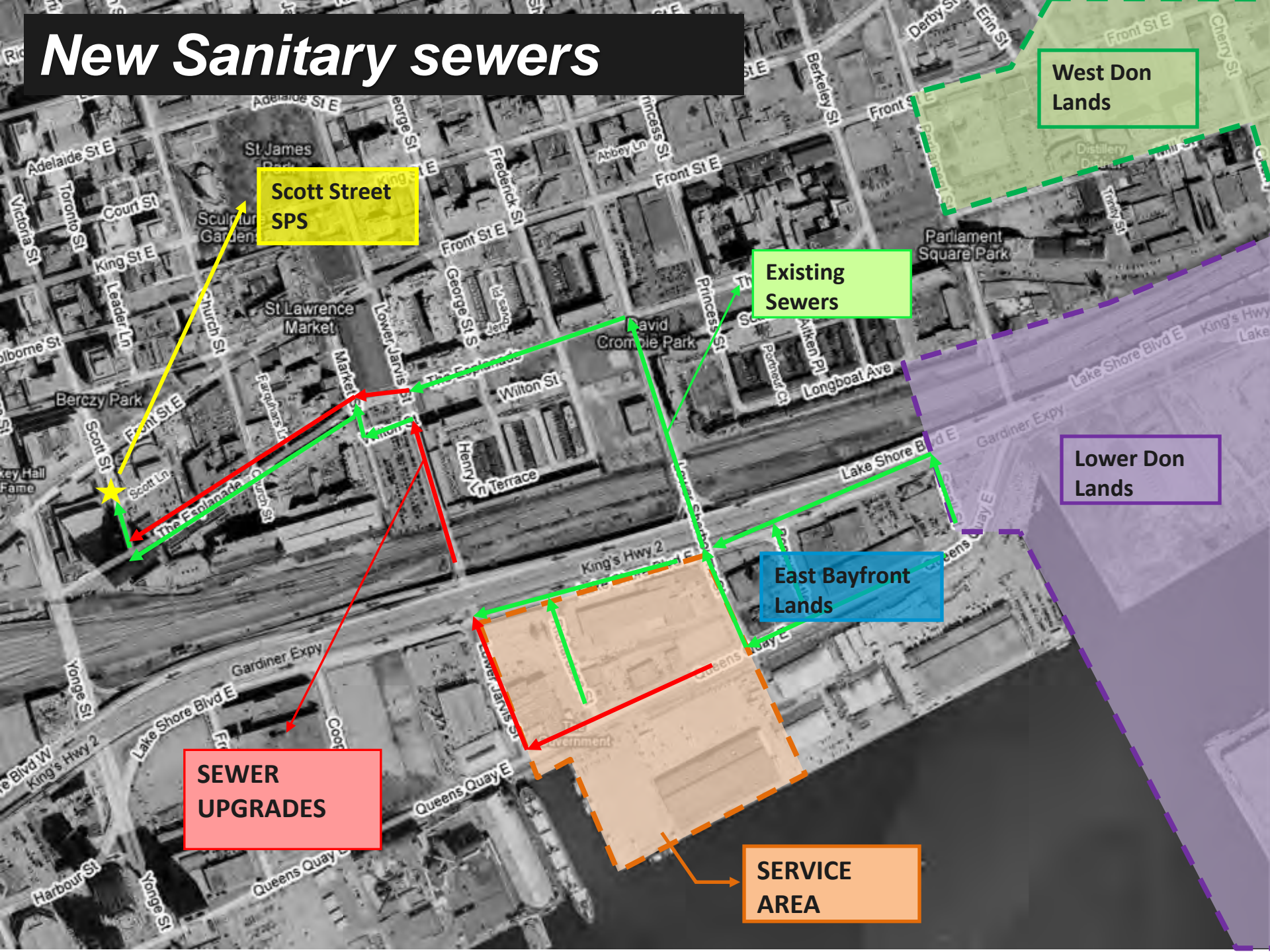
Existing Sewers

Lower Don Lands

East Bayfront Lands

SERVICE AREA

New Sanitary sewers



West Don Lands

Scott Street SPS

Existing Sewers

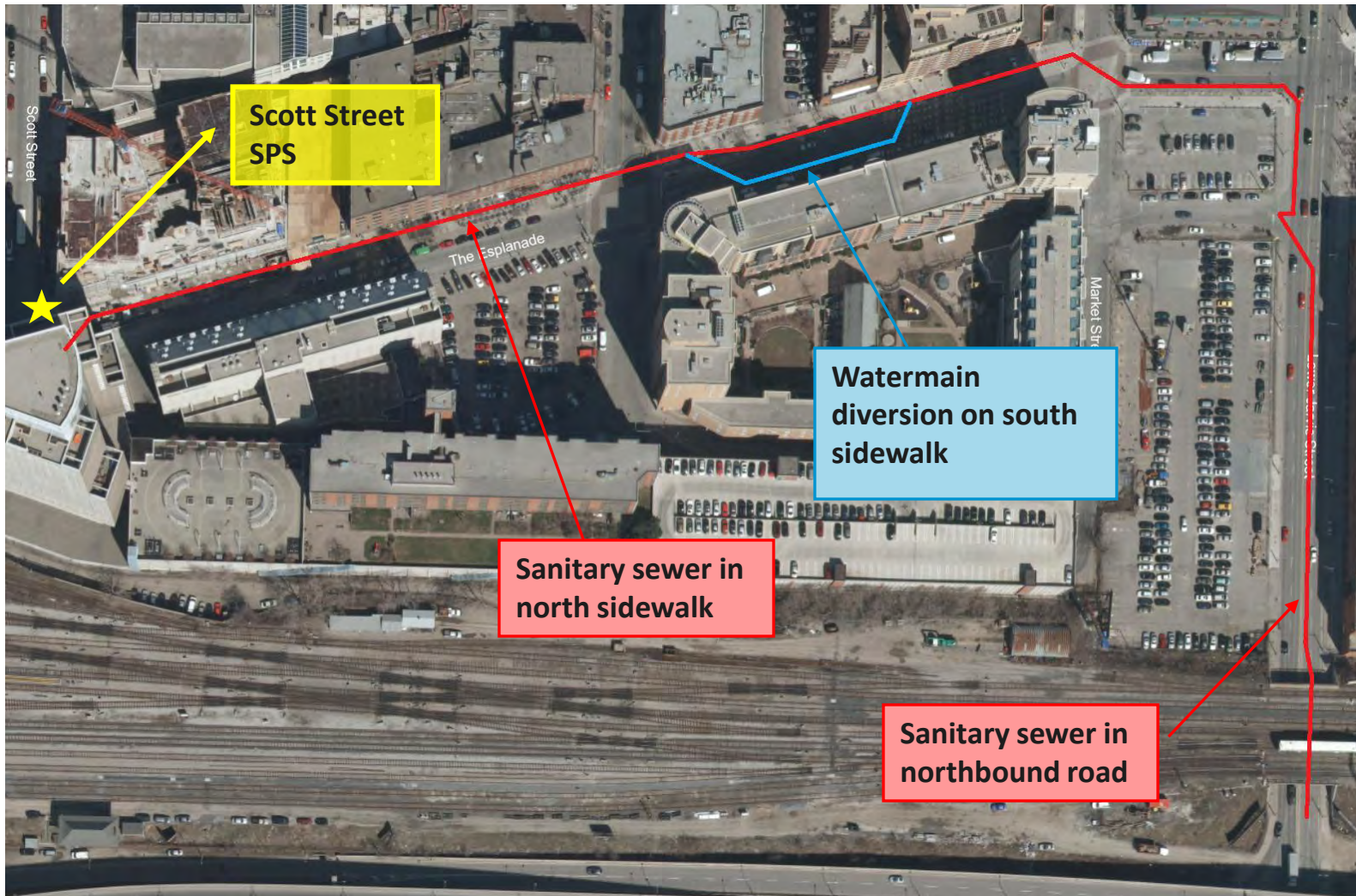
Lower Don Lands

East Bayfront Lands

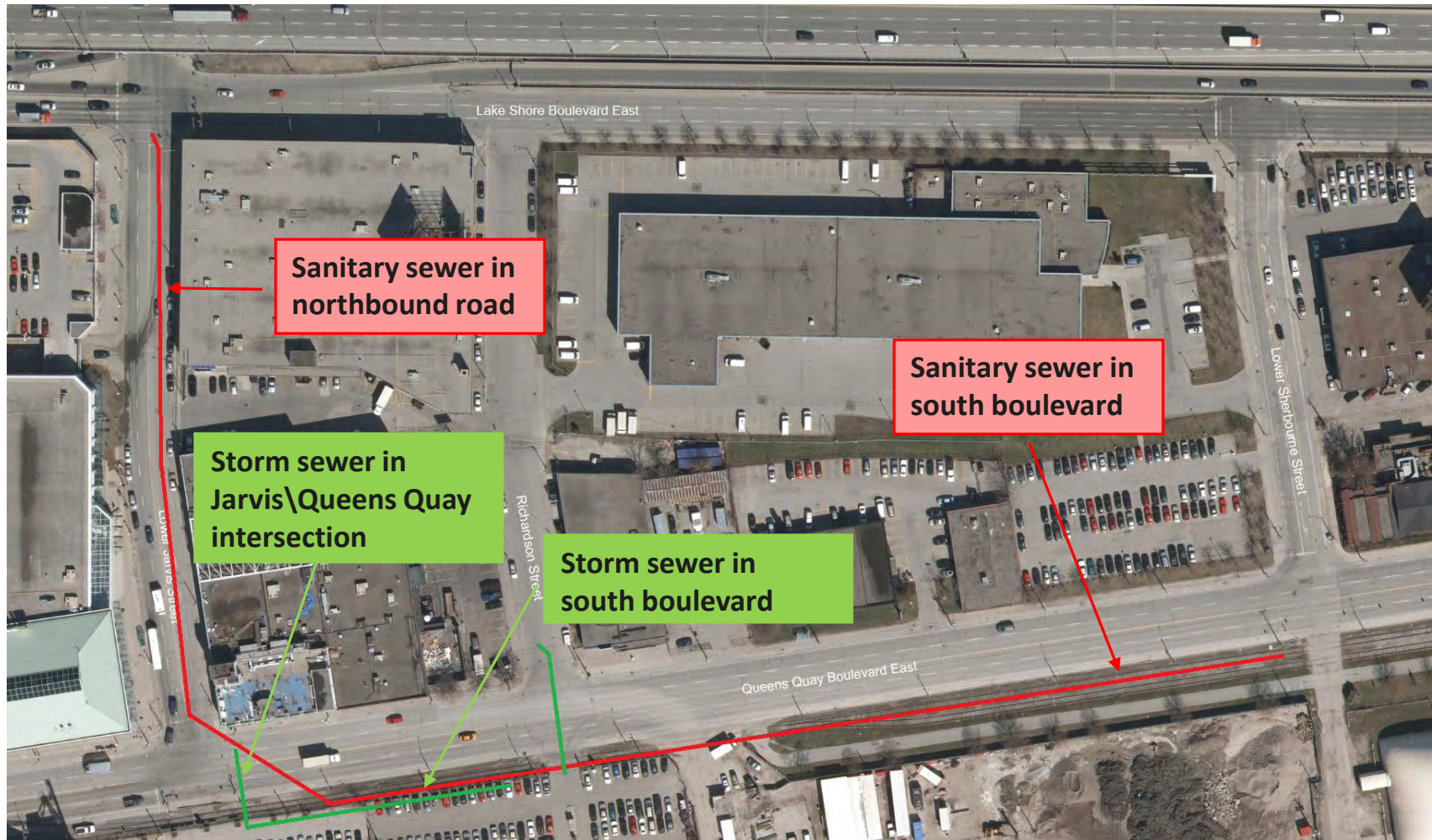
SEWER UPGRADES

SERVICE AREA

Work proposed on The Esplanade & Jarvis



Work proposed on Lower Jarvis & Queens Quay



Project Status

- Eastern Construction will be managing the field work
- The sewer contractor is Clearway Construction
- Regular Construction Planning meetings with the BIA, Neighbourhood Associations and Councillor's office are on-going

Construction Schedule

- Will be constructed in three phases
 1. Queens Quay:
 - May 2011 – October 2011
 2. Jarvis Street:
 - July 2011 – December 2011
 3. The Esplanade:
 - August 2011 – March 2012

Construction methodology for the storm sewer

- Open cut from the surface with trench box support system.



Construction methodology for the sanitary sewer

- Open cut from the surface with trench box support system
- In some cases hand tunnelling in congested areas.



Construction Liaison Committee (CLC)

- The Committee to be finalized at the end of April.
- Members include;
 - St. Lawrence Business Improvement Association (BIA),
 - St. Lawrence Market,
 - St. Lawrence Neighbourhood Association,
 - Business representatives along Queens Quay,
 - Eastern Construction
 - Waterfront Toronto
- The purpose of the CLC is to provide a forum for public feedback during construction.
- Information about construction will be provided to the CLC for distribution to their members.

What to expect during construction

- Two-way road will be maintained during the day and night and weekends. Construction activities will require road lane diversions and narrowing.
- Sidewalks will be diverted in certain areas. Temporary asphalt will be used until final surfaces can be restored at the end of construction.
- On The Esplanade street furniture will be temporarily removed, such as garbage cans, streetlights, bus shelters, etc.
- Work hours will be according to City Standards, 7am to 7pm
- No weekend work is planned.

What to expect during construction, continued

- Because of the high water table a dewatering system will need to be operational at least 1 week in advance. This consists of wells drilled into the ground, surface pipes that collect the water, settling tanks and pumps that will outlet to a utility hole.
- Excavators, front end loaders and construction material will be store near the excavated areas.

Contact Us

During construction you can contact;

- Nick Pechey, Community Relation at Eastern Construction
(npechey@easternconstruction.com)
416-677-3646
- Waterfront Toronto (info@waterfrontoronto.ca) 416-214-1344