

# QUEENS QUAY

## Working Group Meeting #2

Discussion Materials  
2010.08.17

**WEST 8**

+

DTAH

# QUEEN'S QUAY PROMENADE



## TREE PLANTING

**Tree Spacing**  
10m on centre

**Silva Cells**  
South side promenade trees supported by Silva Cells.  
North Side trees planted in continuous planting pits (no Silva Cells)



# TREE SPECIES

## South Side

OPTION 1: Planetree cultivars, planted in staggered rows.



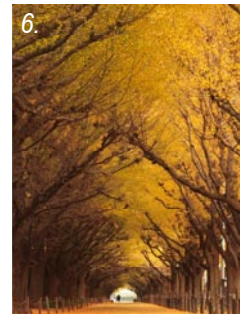
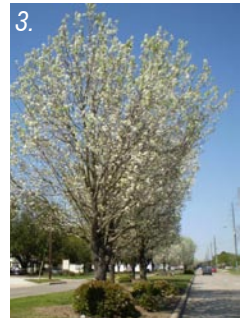
OPTION 2: Elm cultivars planted in staggered rows.



## North Side

Diverse variety of native species and hardy cultivars, planted to suit available soil conditions.

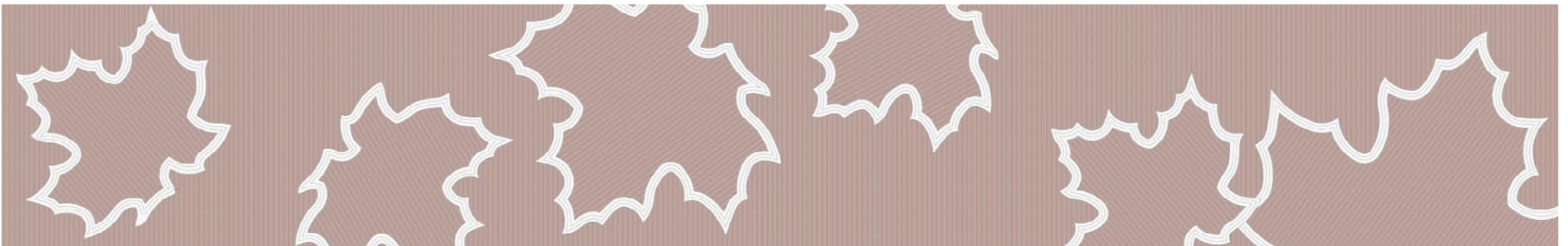
1. Honeylocust
2. *Tilia cordate* (Littleleaf Linden)
3. *Pyrus calleryana* (Bradford Pear)
4. *Acer saccharum* (Sugar Maple)
5. *Quercus rubra* (Red Oak)
6. *Ginkgo biloba* (Ginkgo)



# MATERIALS

## Granite Mosaic

- 1. Royal Canadian Red Granite (field)
- 2. St. Sebastien Grey granite (leaf outline)



## MATERIALS

### Granite Curbs

Caledonia Grey granite for Queen's Quay Road way & Intersection Tabletops

### Concrete Unit Paving

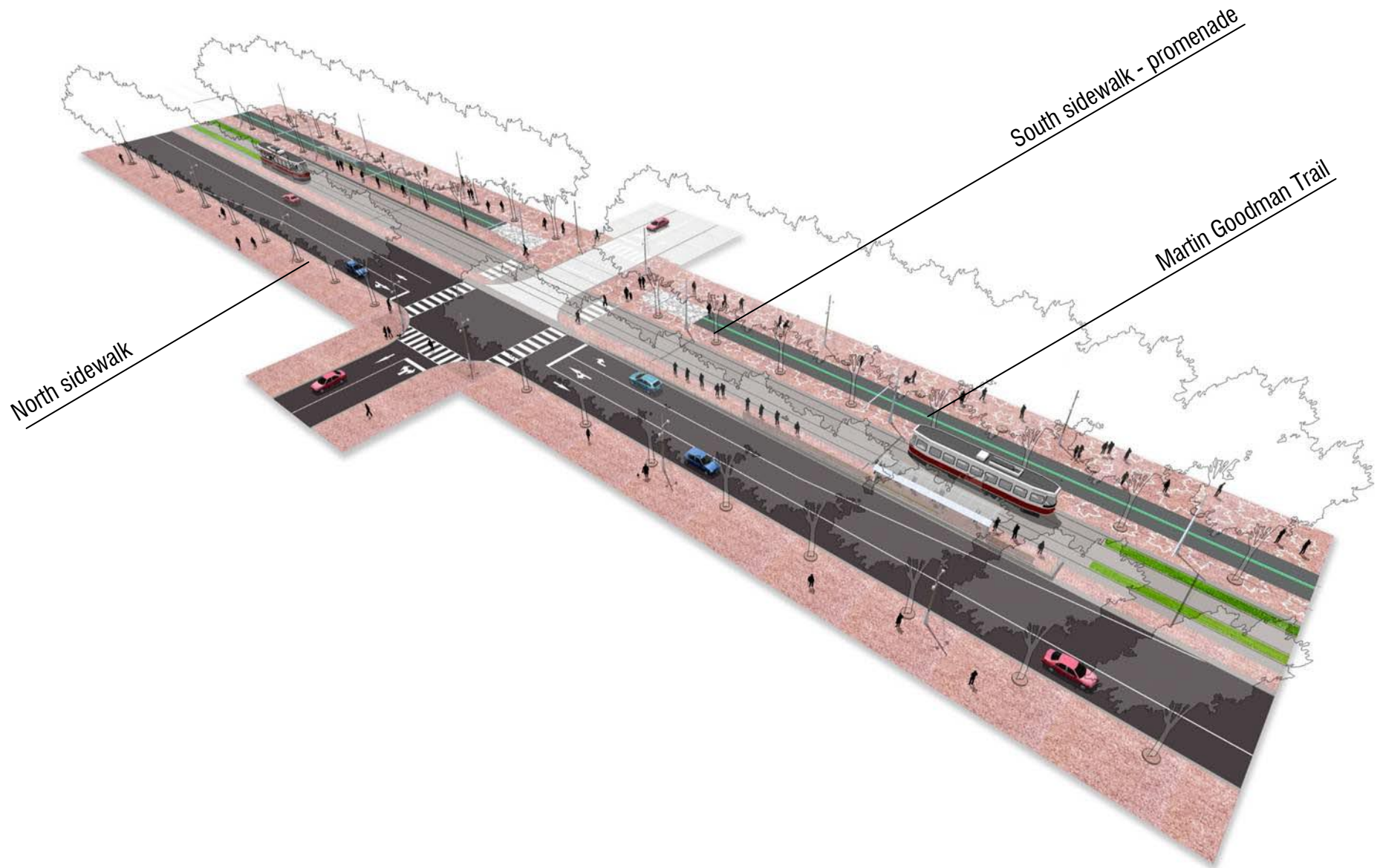
Tumbled grey concrete pavers for Intersections & TTC ROW

### Site furniture

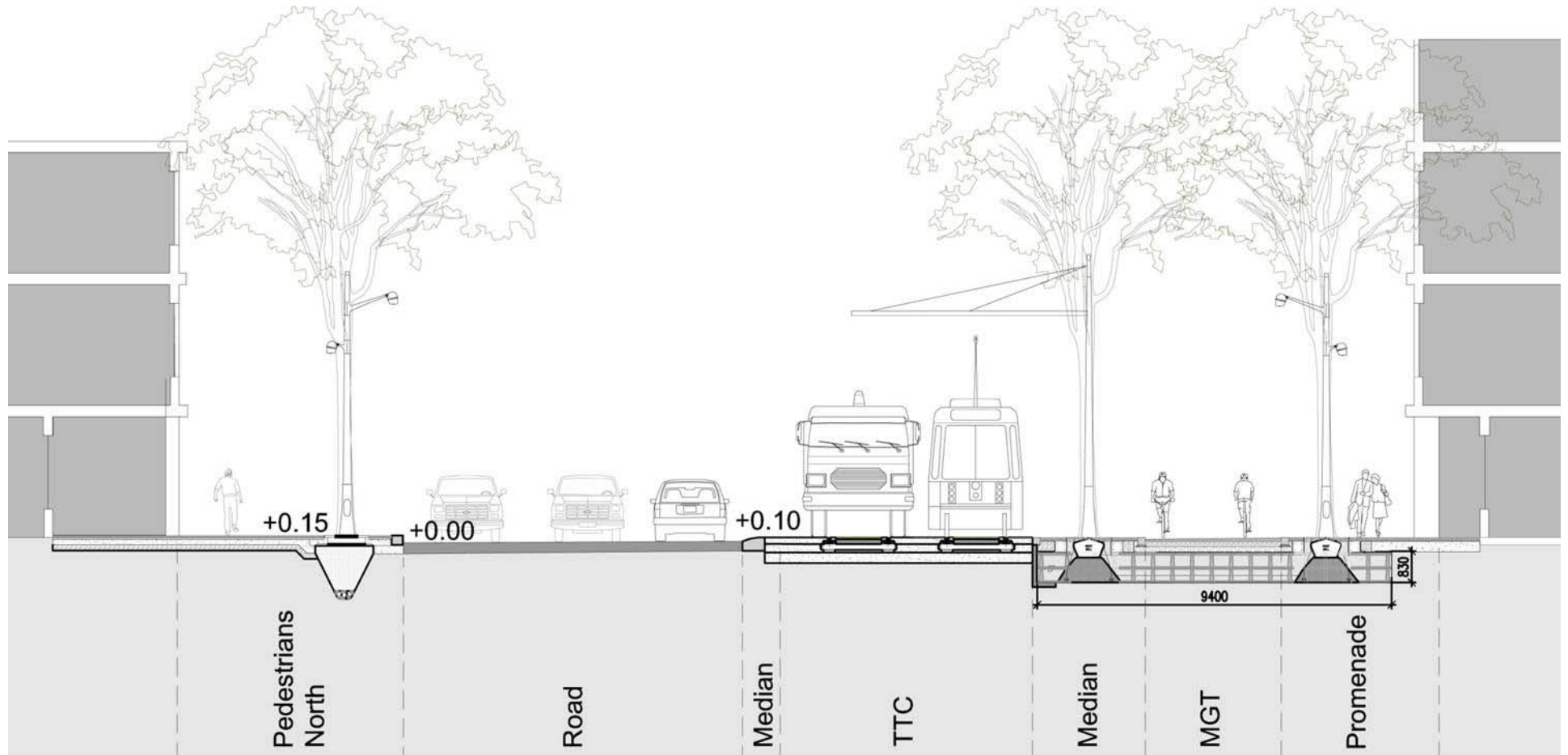
Custom Wood Benches  
Custom Wood light poles



# STREET GEOMETRY

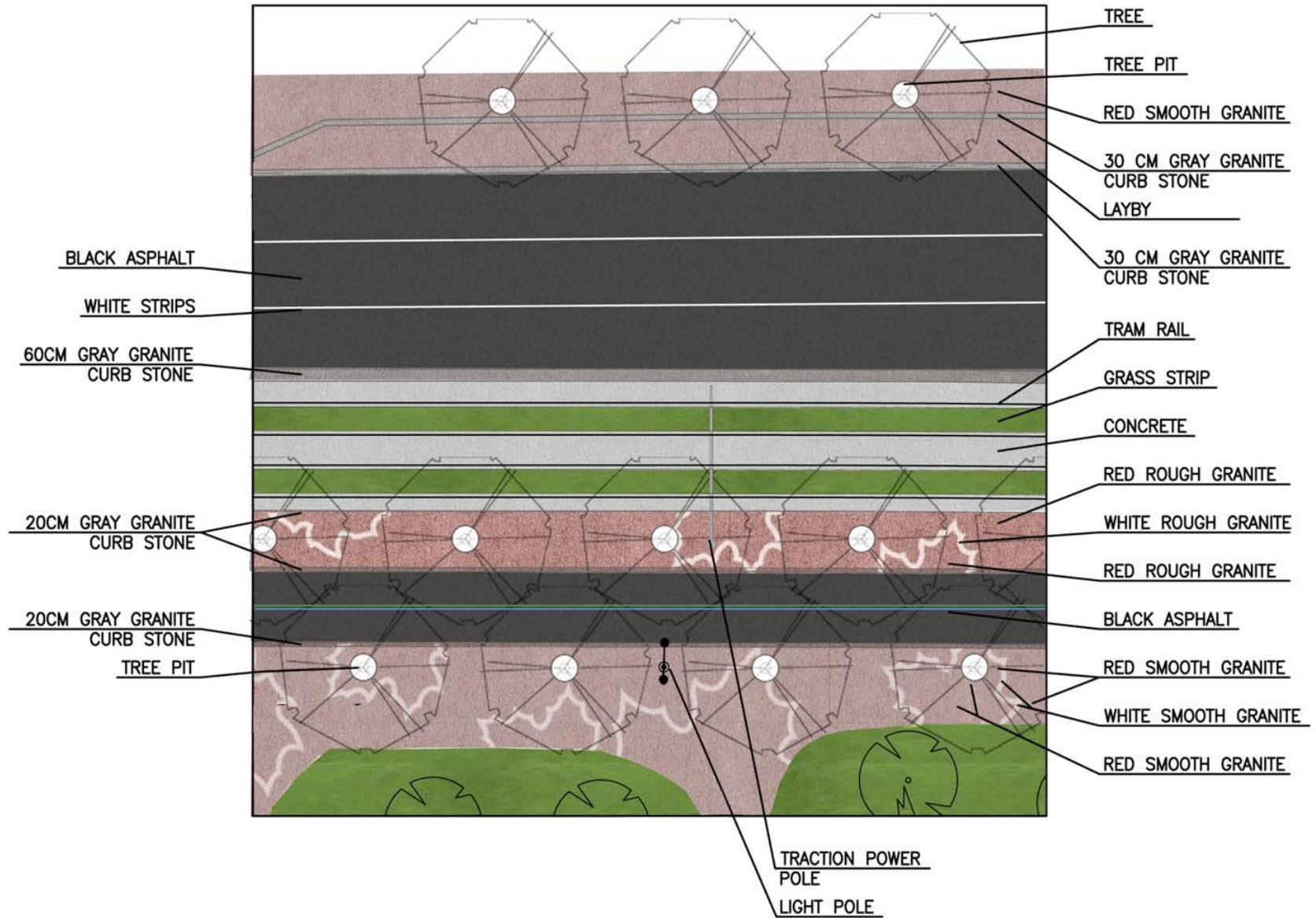


# STREET GEOMETRY





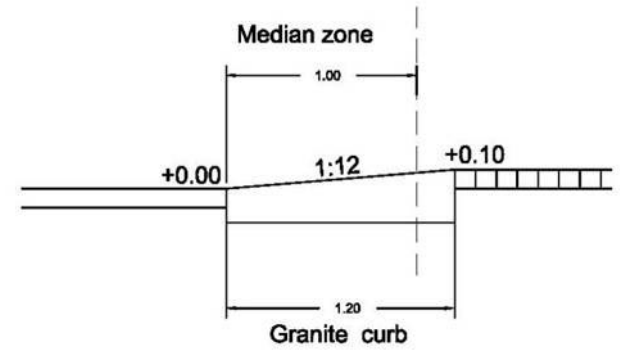
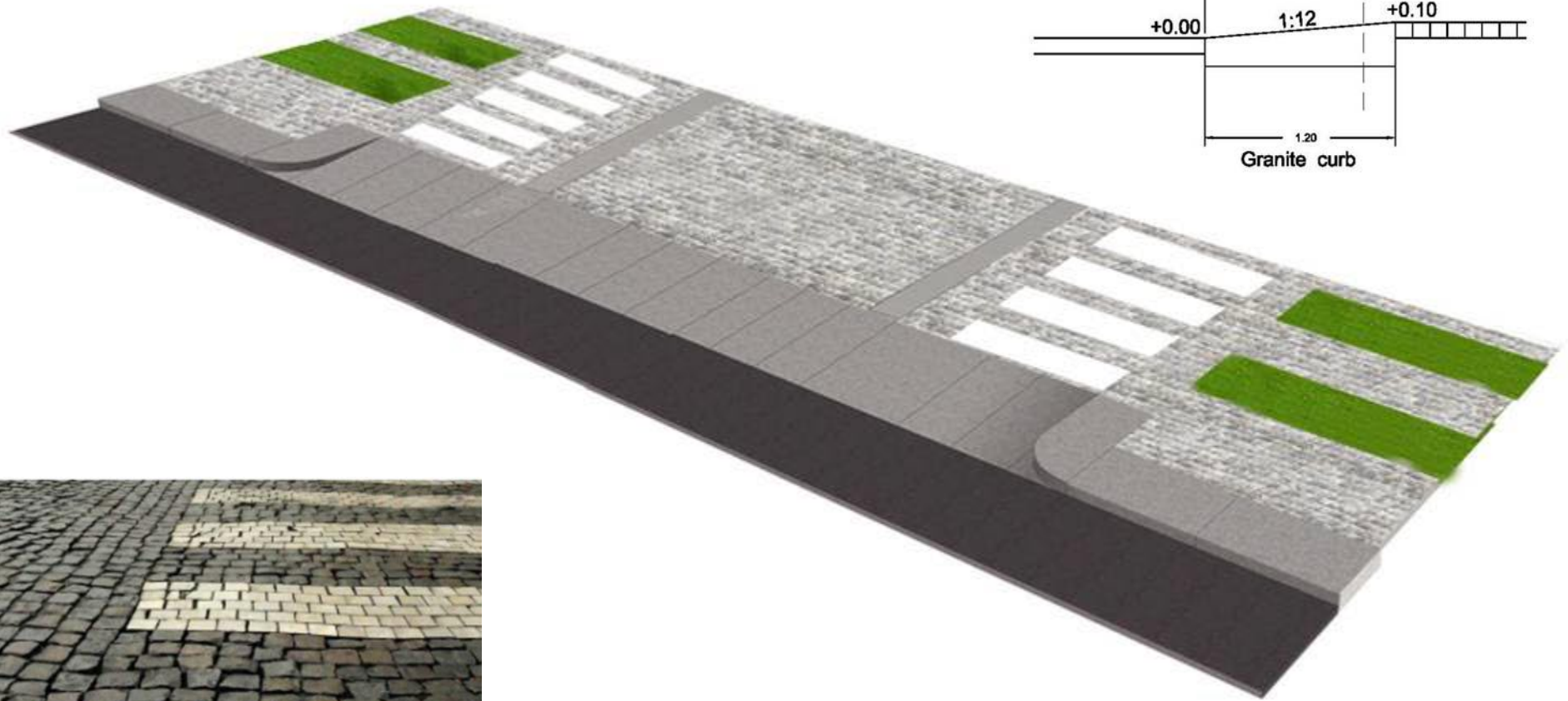
# STREET GEOMETRY



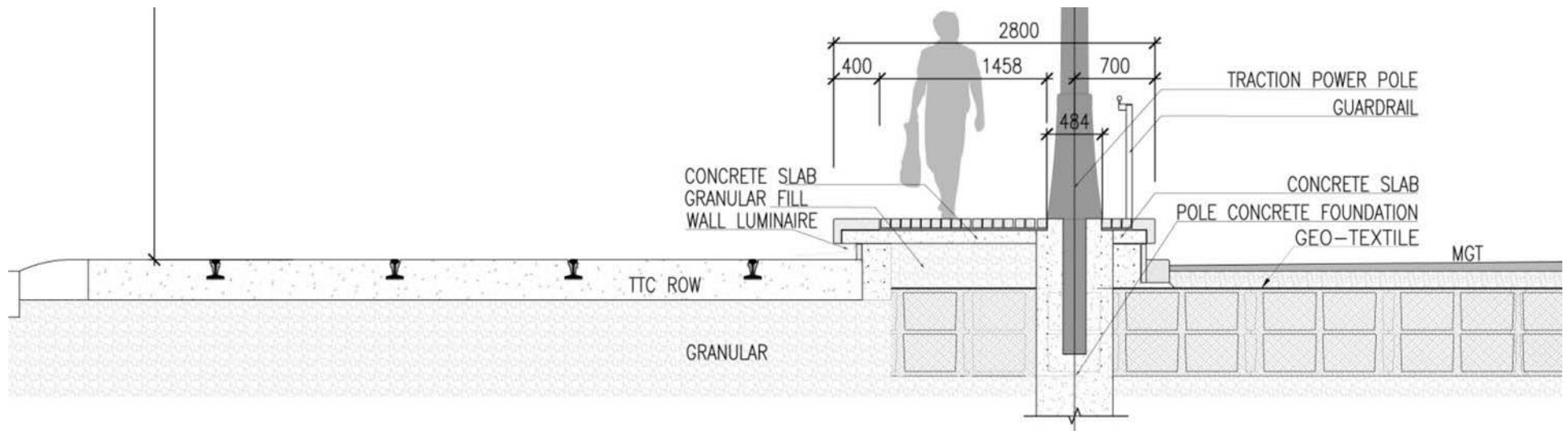
# INTERSECTION DESIGN



# INTERSECTION DESIGN - TABLETOP



# INTERSECTION DESIGN - TTC PLATFORM



## 2 MONTH LOOK-AHEAD

1. Completion of Horizontal Alignment
2. Selection of Wayfinding / Signage consultant
3. Bus Inventory & Management Strategy
4. Accessibility Review
5. Completion of Schematic Design
6. Utility work plan
7. Event electrical plan