



Pinewood Toronto Studios

Film + Television Support Facility – Waterfront Toronto DRP Meeting

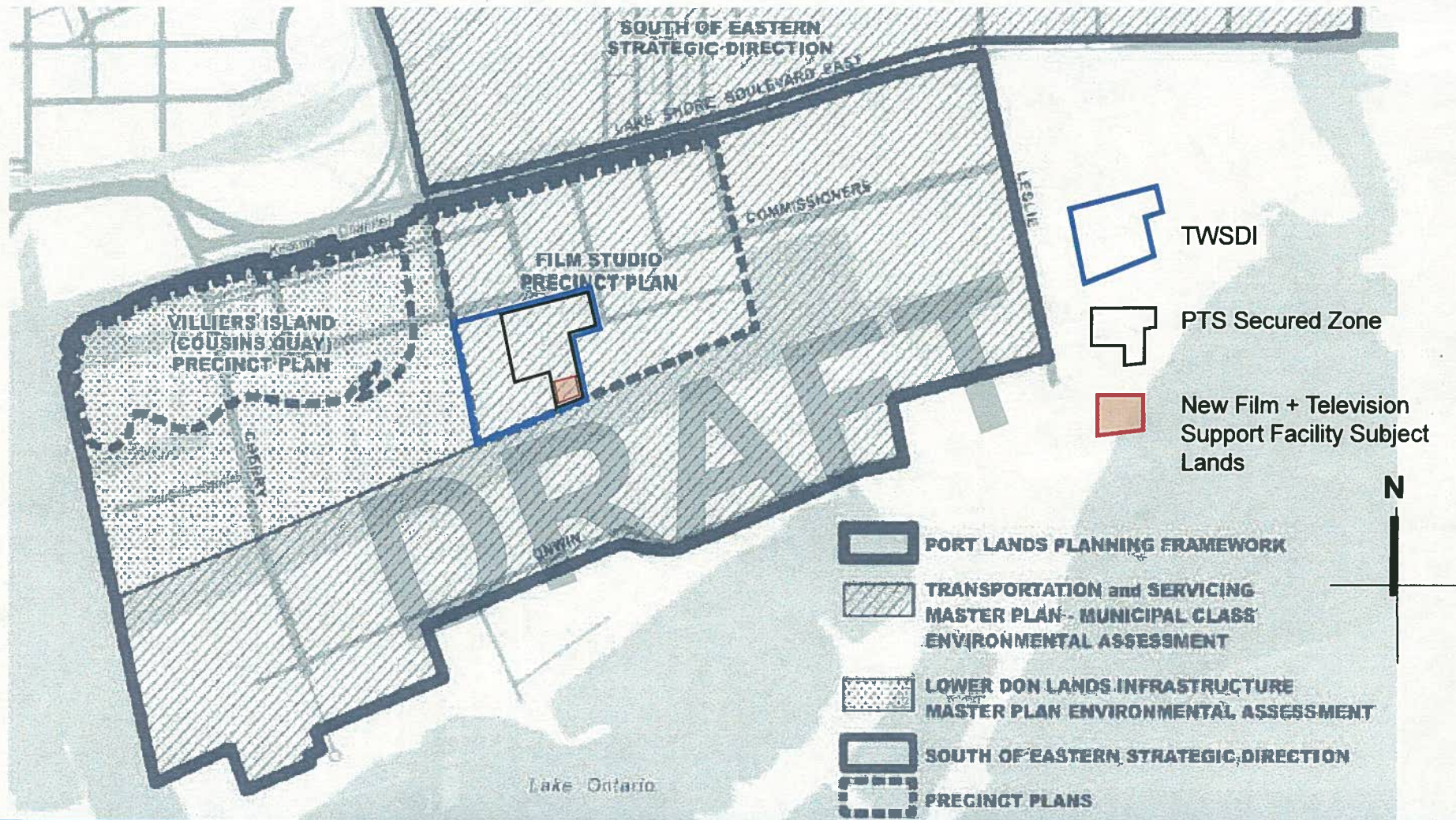
July 20, 2016



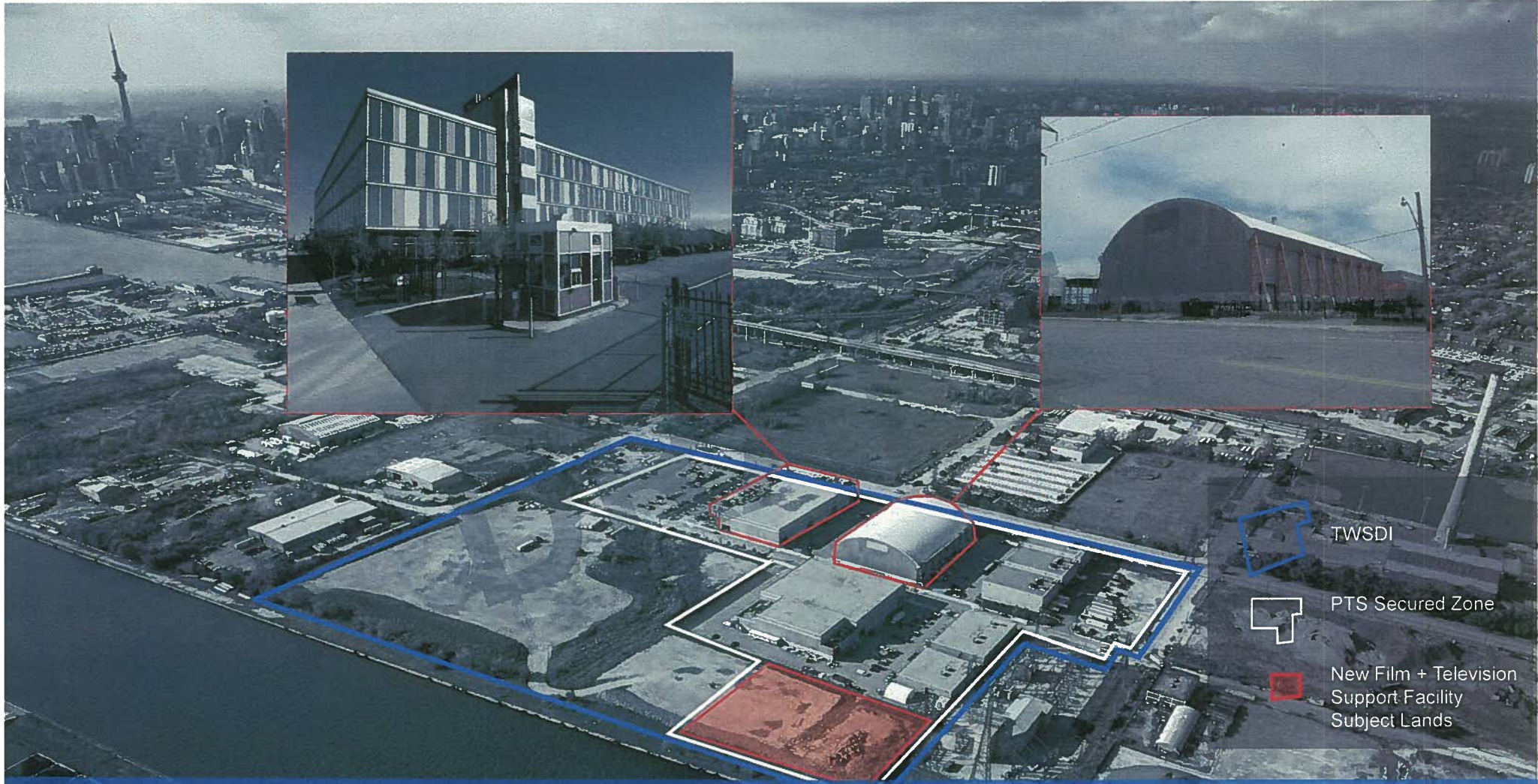
TORONTO STUDIOS



PINEWOOD
TORONTO STUDIOS



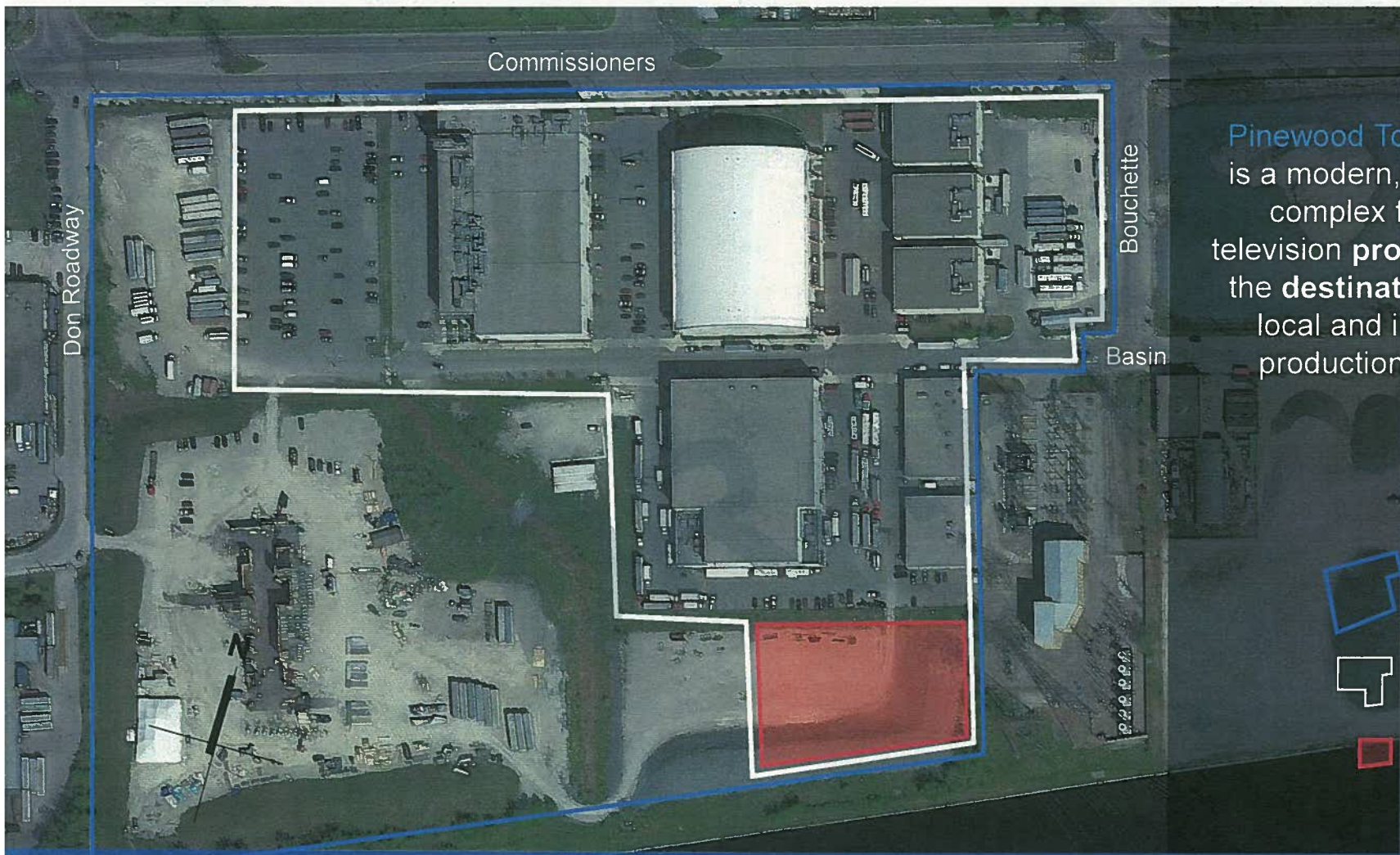
site location Port Lands Planning Initiatives



-  TWSDI
-  PTS Secured Zone
-  New Film + Television Support Facility Subject Lands

site location Pinewood Toronto Studios campus





Pinewood Toronto Studios is a modern, purpose-built complex for film and television production and is the **destination** facility for local and international production in Toronto.



TWSDI



PTS Secured Zone



New Film + Television Support Facility Subject Lands

existing campus Pinewood Toronto Studios





currently

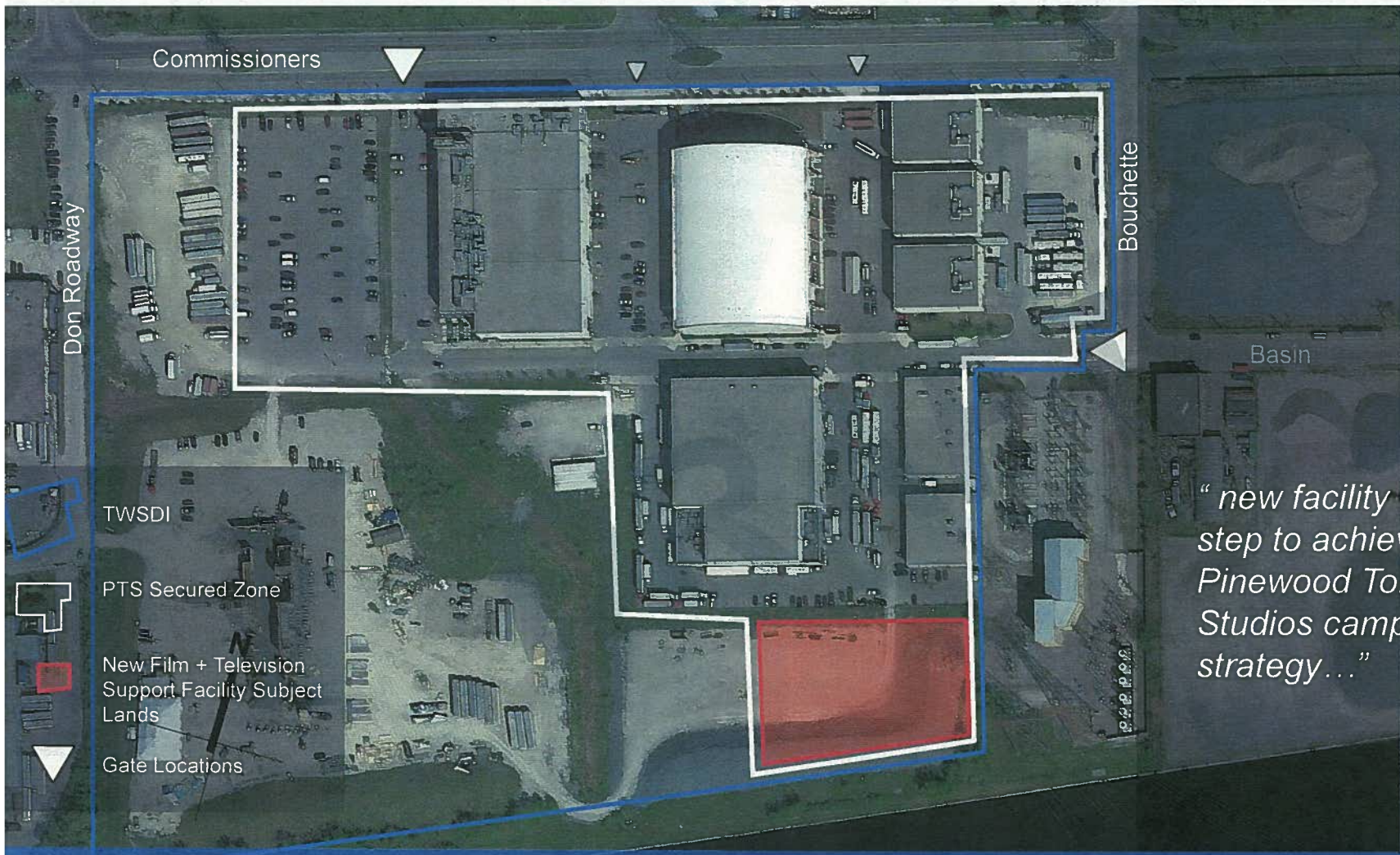
- approx. 14 acre campus
- 300K sf production + office + support space
- 10 stages
- accommodate full range of productions
- includes 46K stage (North America's largest purpose built sound stage)

goals

- grow secured facility
- double size of current film + television footprint
- anchor film-friendly mixed use community across 30 acres total

existing campus Pinewood Toronto Studios





Commissioners

Don Roadway

Bouchette

Basin

TWSDI

PTS Secured Zone

New Film + Television
Support Facility Subject
Lands

Gate Locations

*“new facility the first
step to achieving
Pinewood Toronto
Studios campus growth
strategy...”*

existing campus Pinewood Toronto Studios

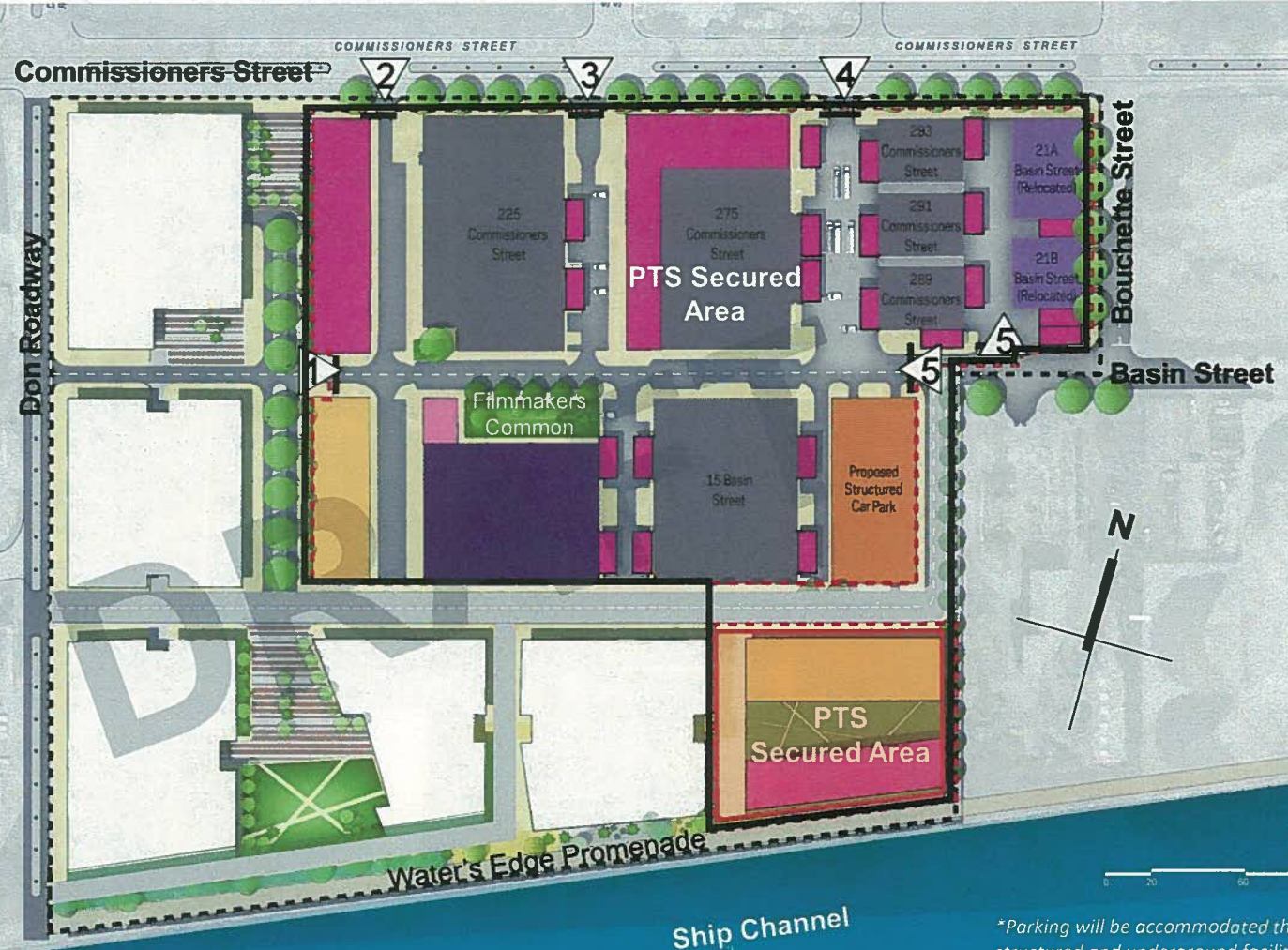


Land Use – Inside the Gate

-  Shops/Studio Flex Space
-  Production Office
-  Studio Amenity
-  Relocated Shops
-  Proposed Stages
-  Existing Buildings
-  Structured Car Park*
-  Security Gate

 PTS Secured Zone

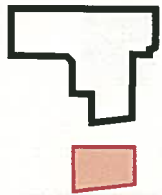
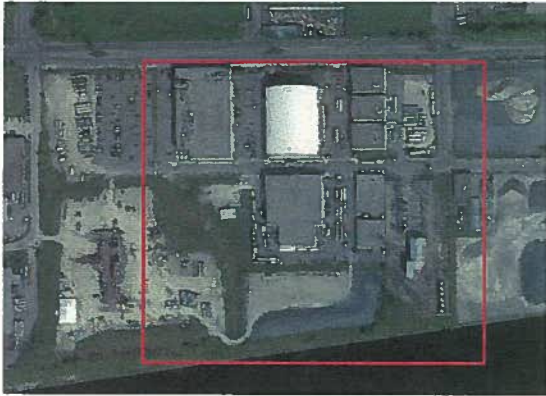
 New Film + Television Support Facility Subject Lands



*Parking will be accommodated through both structured and underground facilities.

site location Pinewood Toronto Studios Masterplan

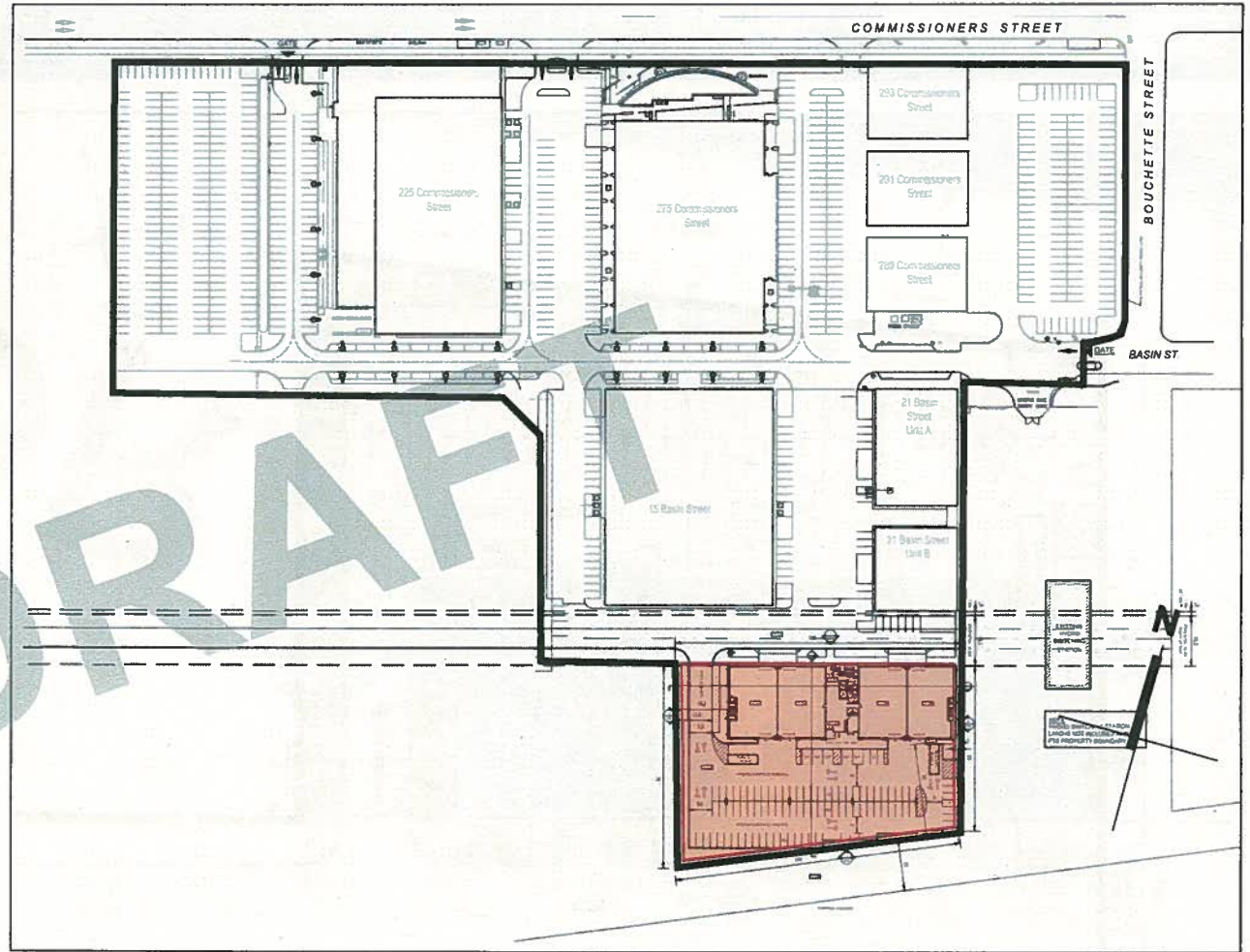




LEGEND

PTS Secured Zone

New Film + Television
Support Facility Subject
Lands

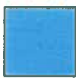






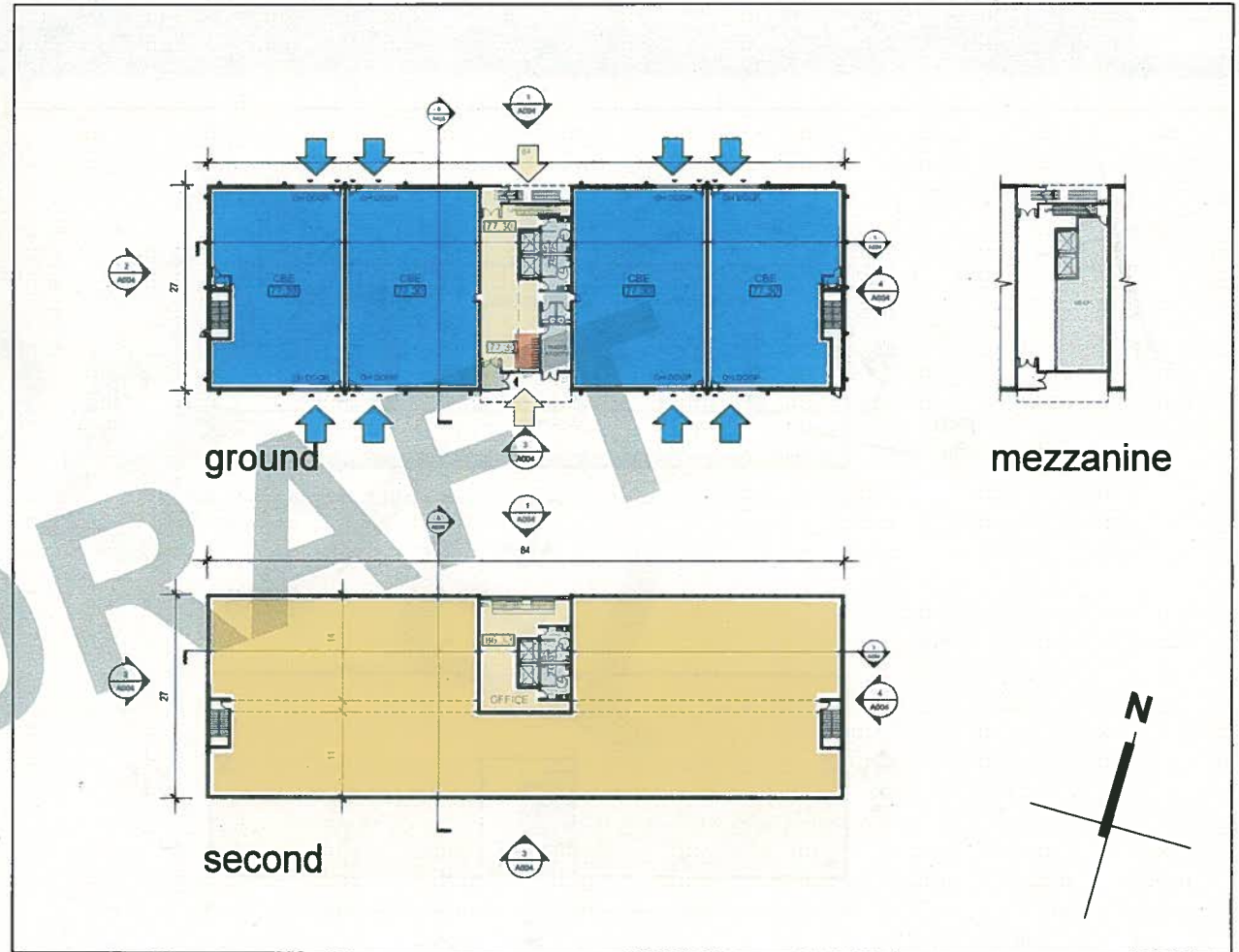
new facility campus context plan





LEGEND

-  Carpentry workshops/flex space
-  Production office space
-  Production office core/lobby space
-  Building services space
-  Long-term bike storage








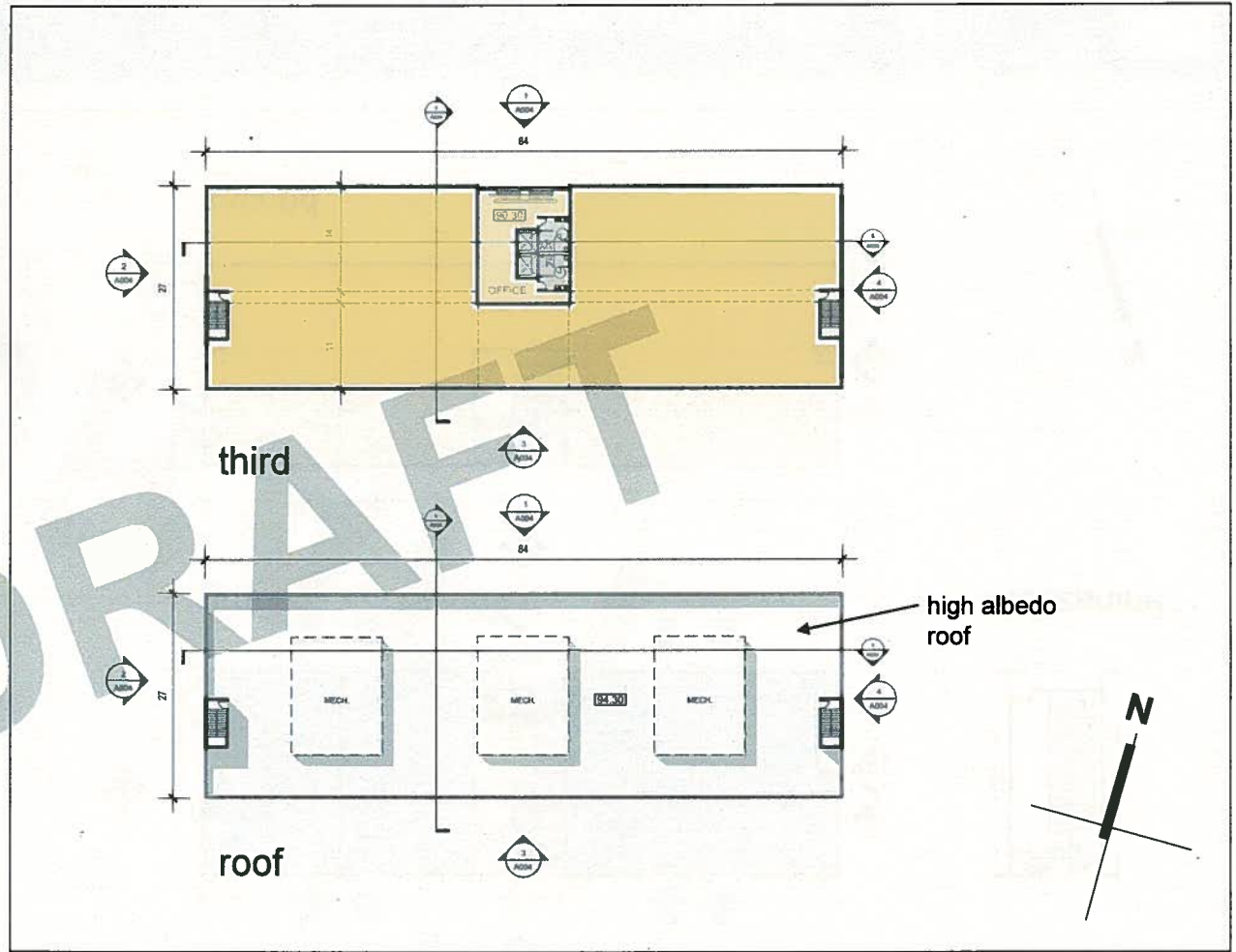
new facility floor plans





LEGEND

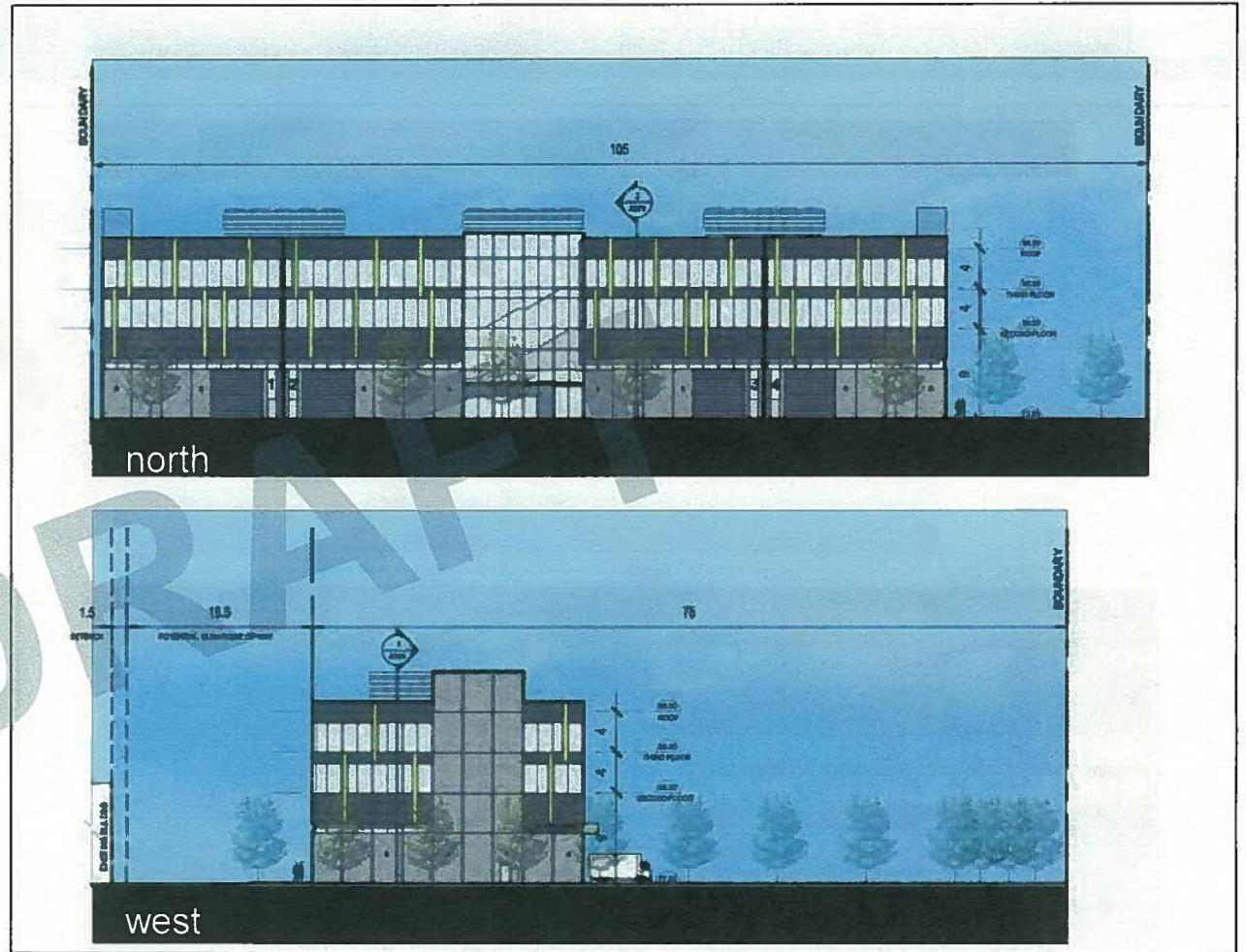
-  Carpentry workshops/flex space
-  Production office space
-  Production office core/lobby space
-  Building services space
-  Long-term bike storage



new facility floor plans

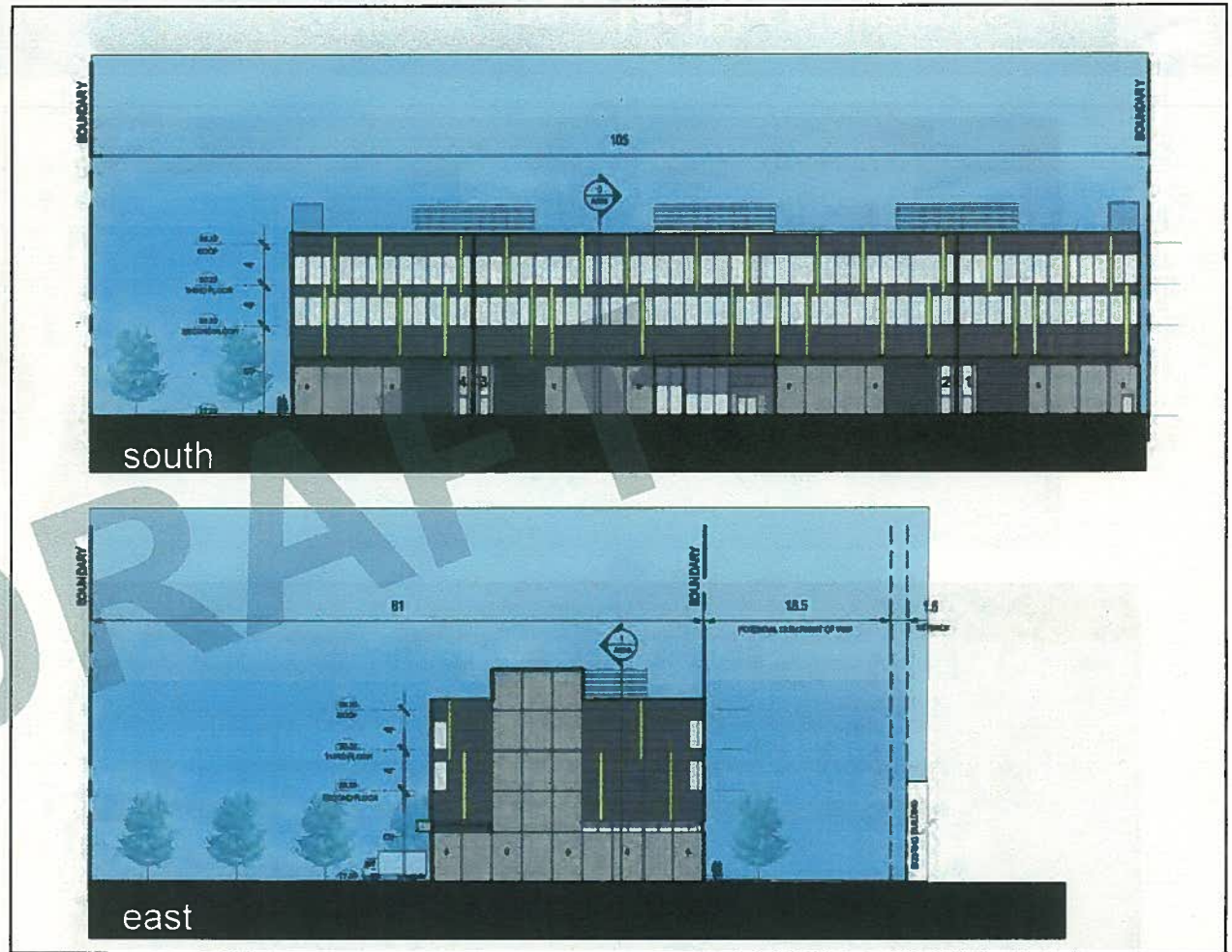


TORONTO STUDIOS



new facility elevations





new facility elevations



TORONTO STUDIOS

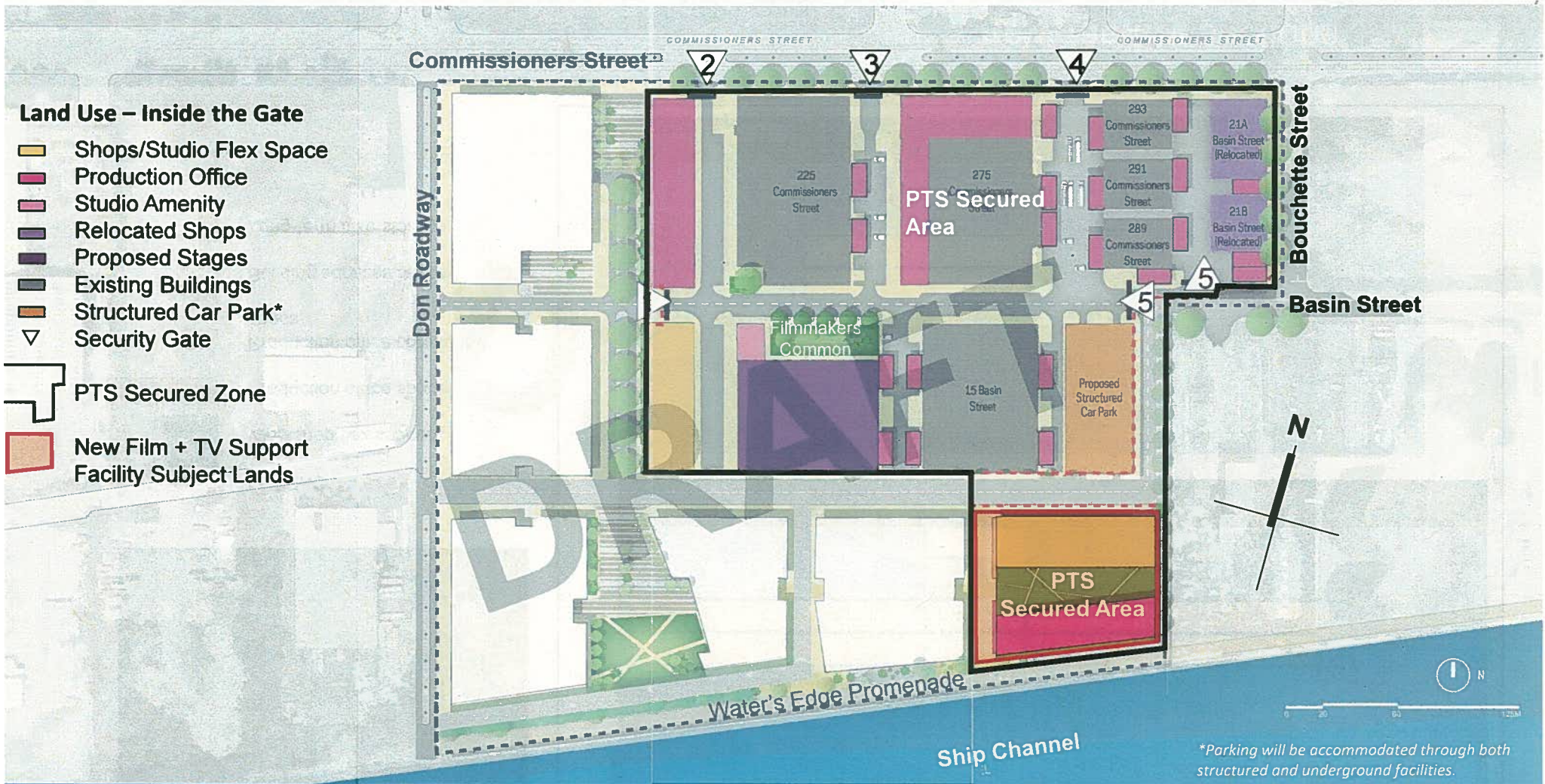


- LEGEND**
- Workshop/flex spaces
 - Production office space
 - Production office core/lobby space
 - Building services space
 - Long-term bike storage



new facility sections

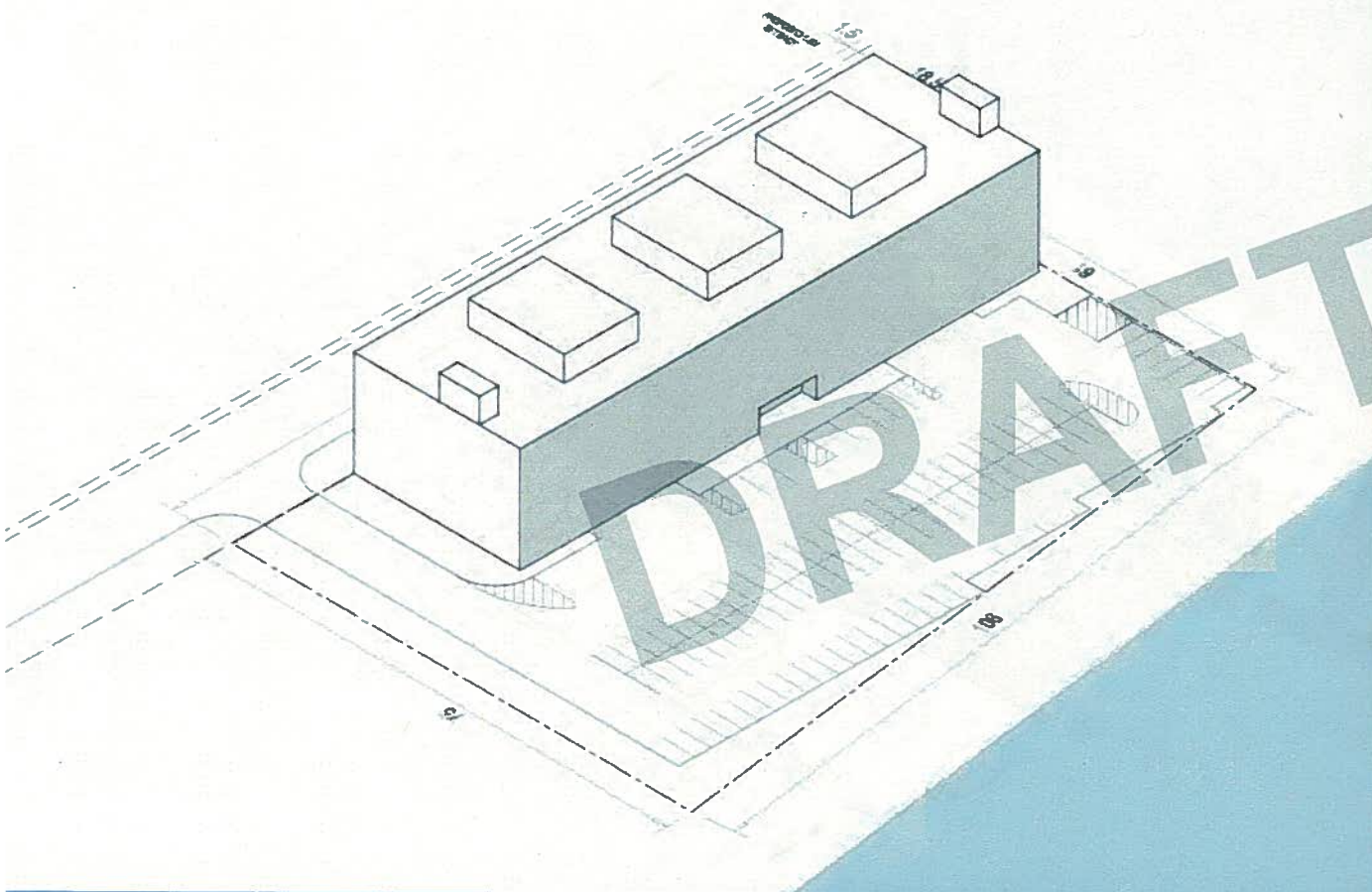




*Parking will be accommodated through both structured and underground facilities.

future focused Pinewood Toronto Studios Masterplan



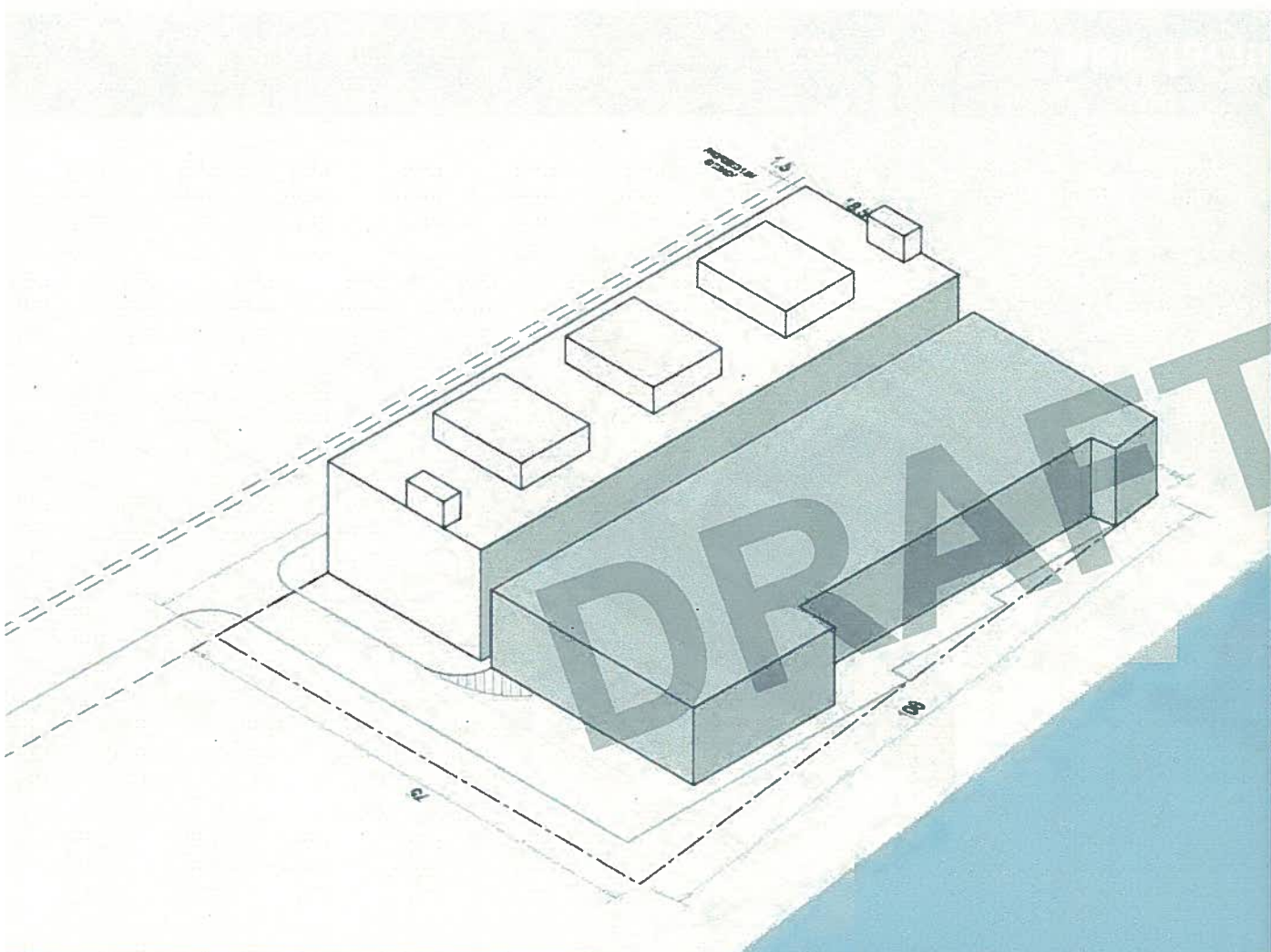


- | Phase 1 Construction of Film and Television Support Facility
- | Phase 1 Introduction of Interim Surface Parking Lot

NOTE:
Current SPA application focuses on Phase 1 only.

new facility future focused



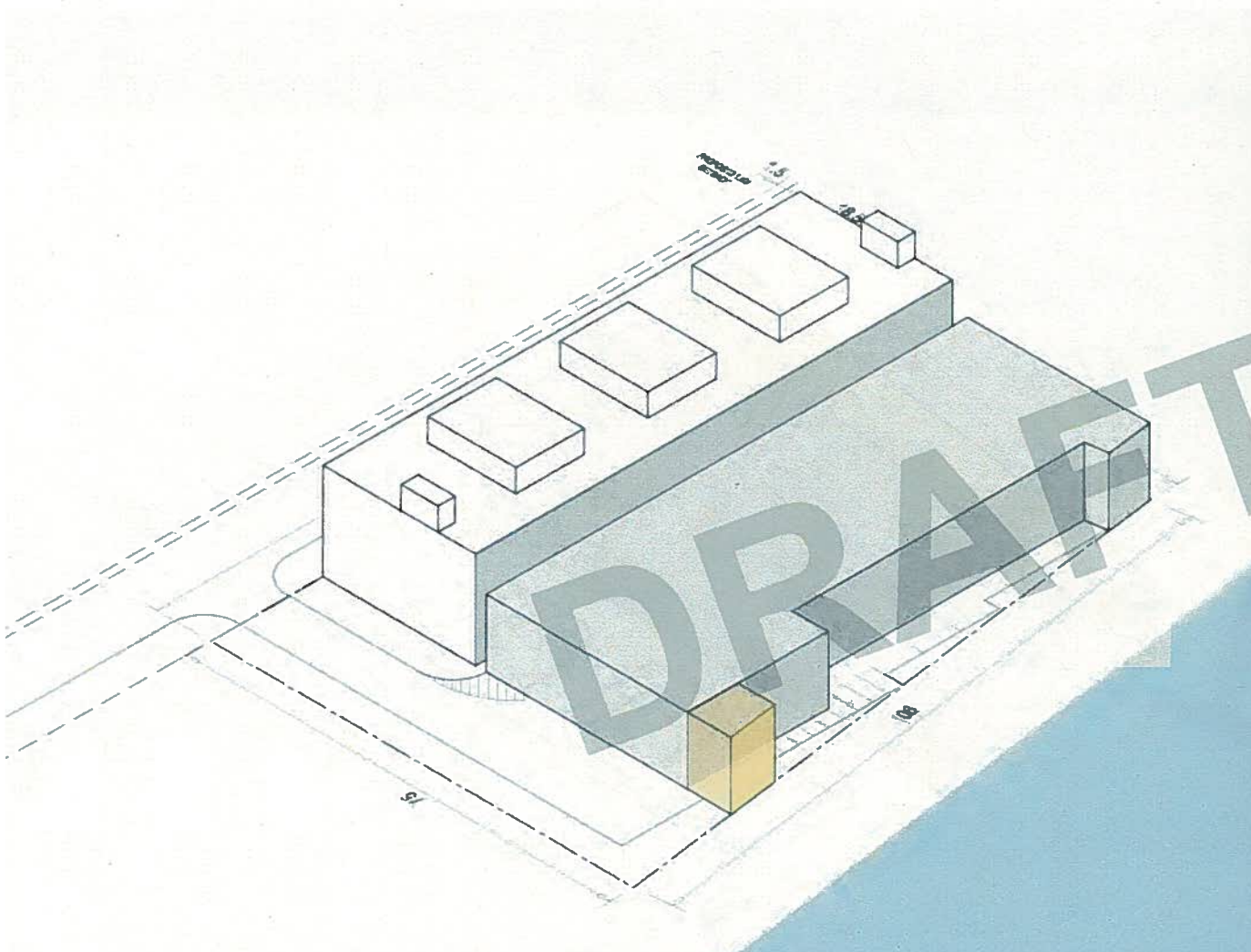


| Phase 2 Structured Parking
Replaces Interim Surface Parking
Lot

NOTE:
Current SPA application focuses
on Phase 1 only.

new facility future focused





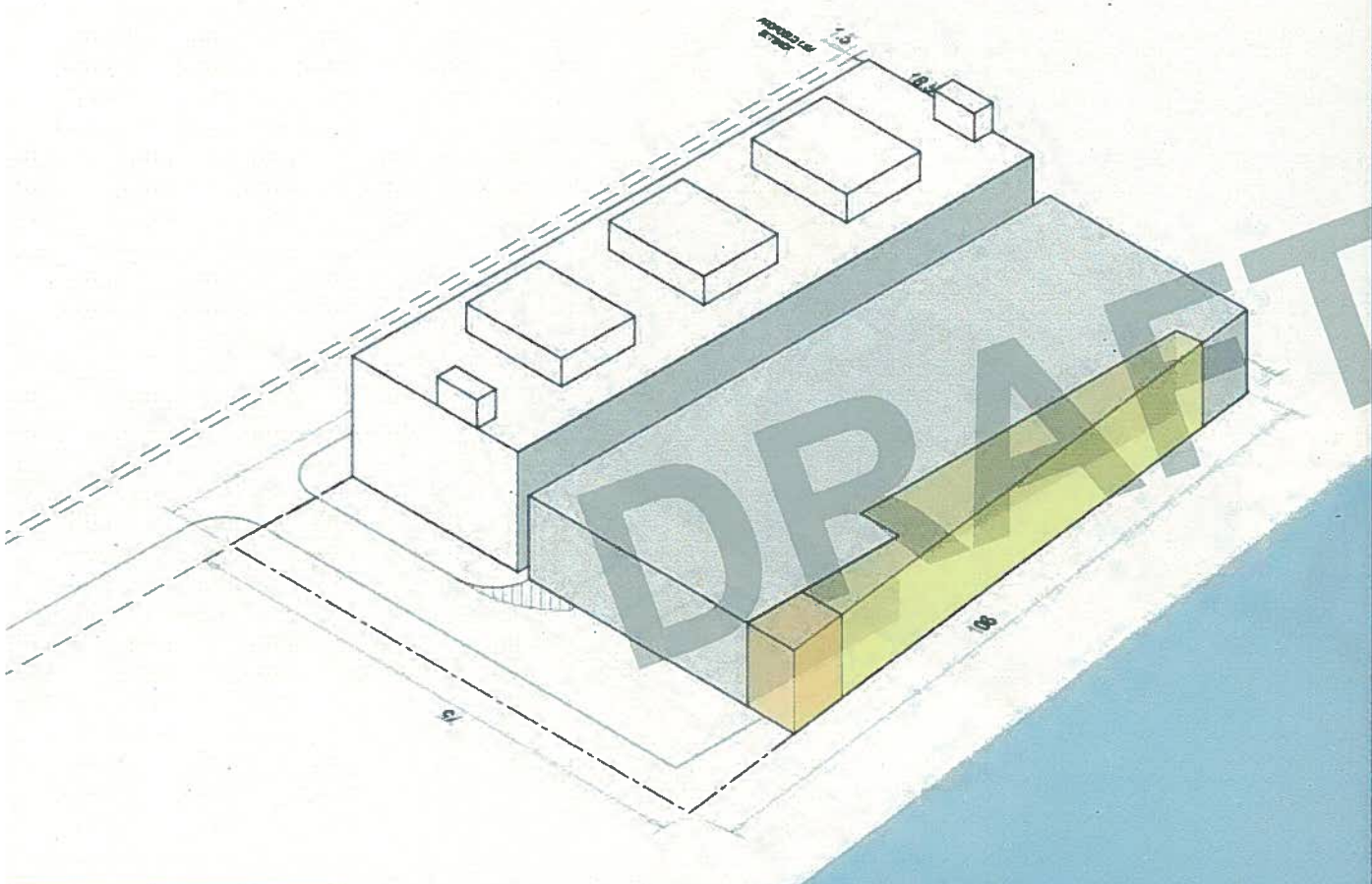
| Phase 2 Introduction of
Production Facilities – Entry
Lobby

| Service Lane

NOTE:
Current SPA application focuses
on Phase 1 only.

new facility future focused



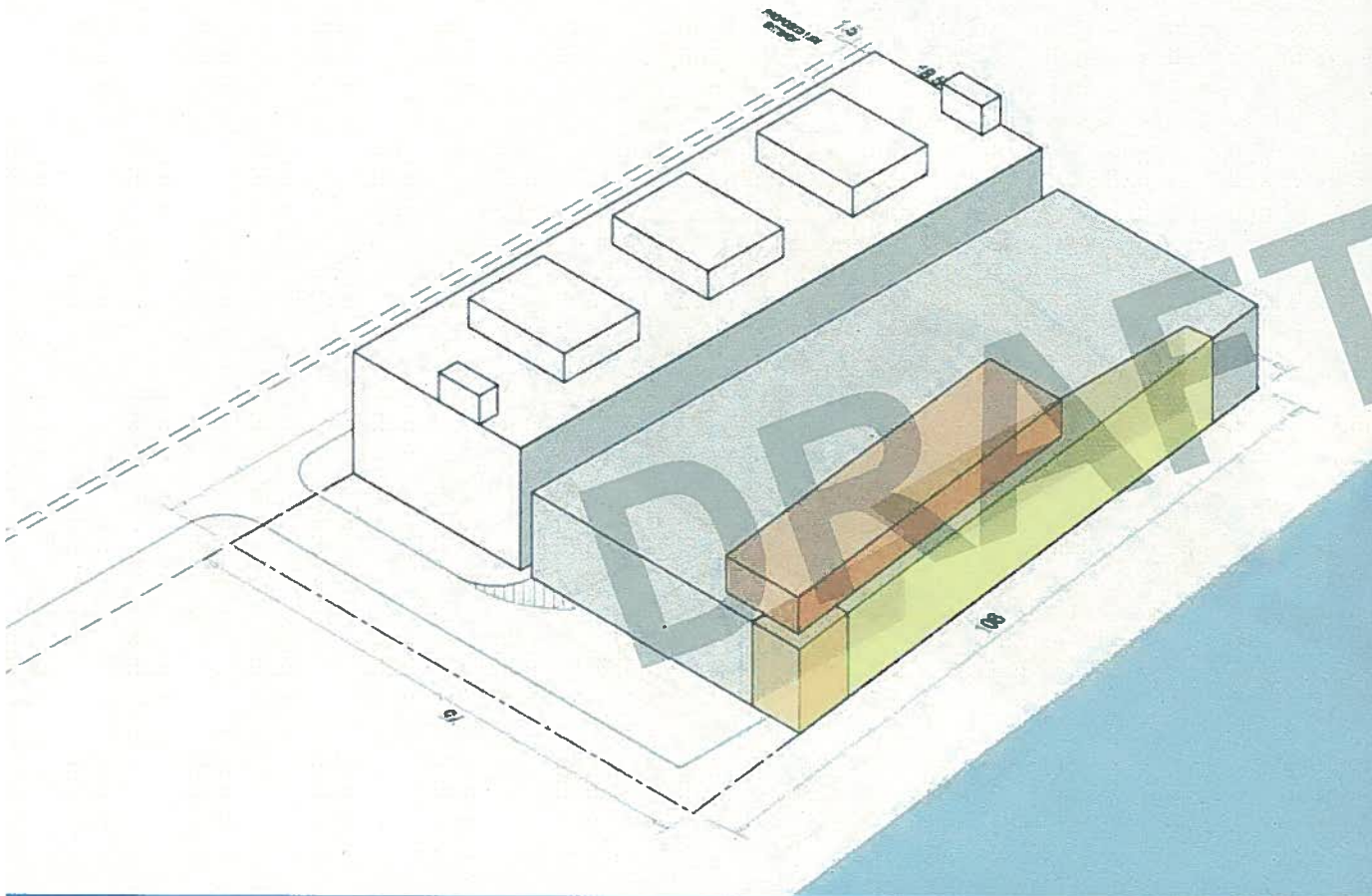


Phase 2 Introduction of Commercial - Fronting onto Water's Edge Promenade along Ship Channel

NOTE:
Current SPA application focuses on Phase 1 only.

new facility future focused



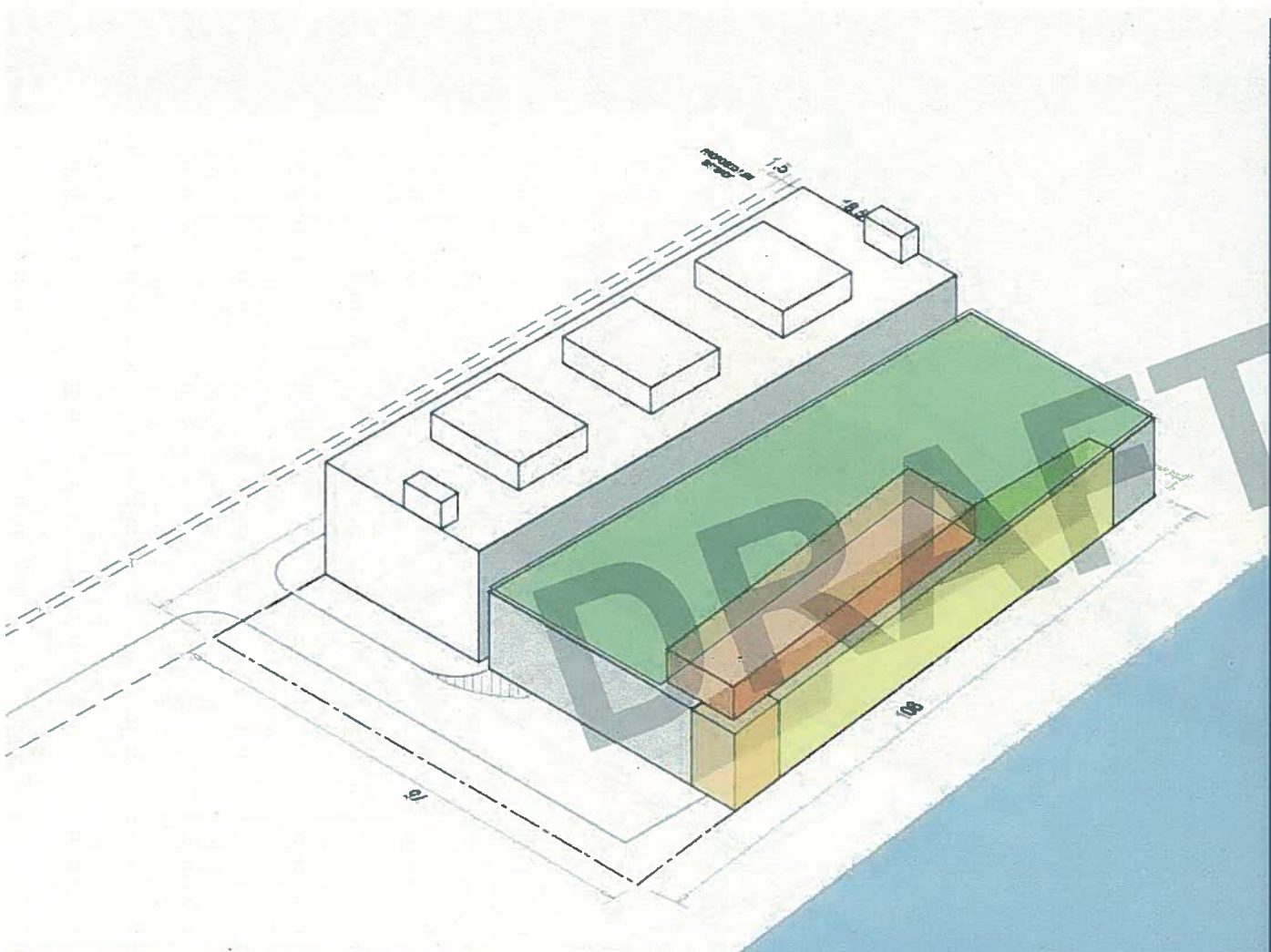


Phase 2 Introduction of
Production Facility Amenity Level

NOTE:
Current SPA application focuses
on Phase 1 only.

new facility future focused



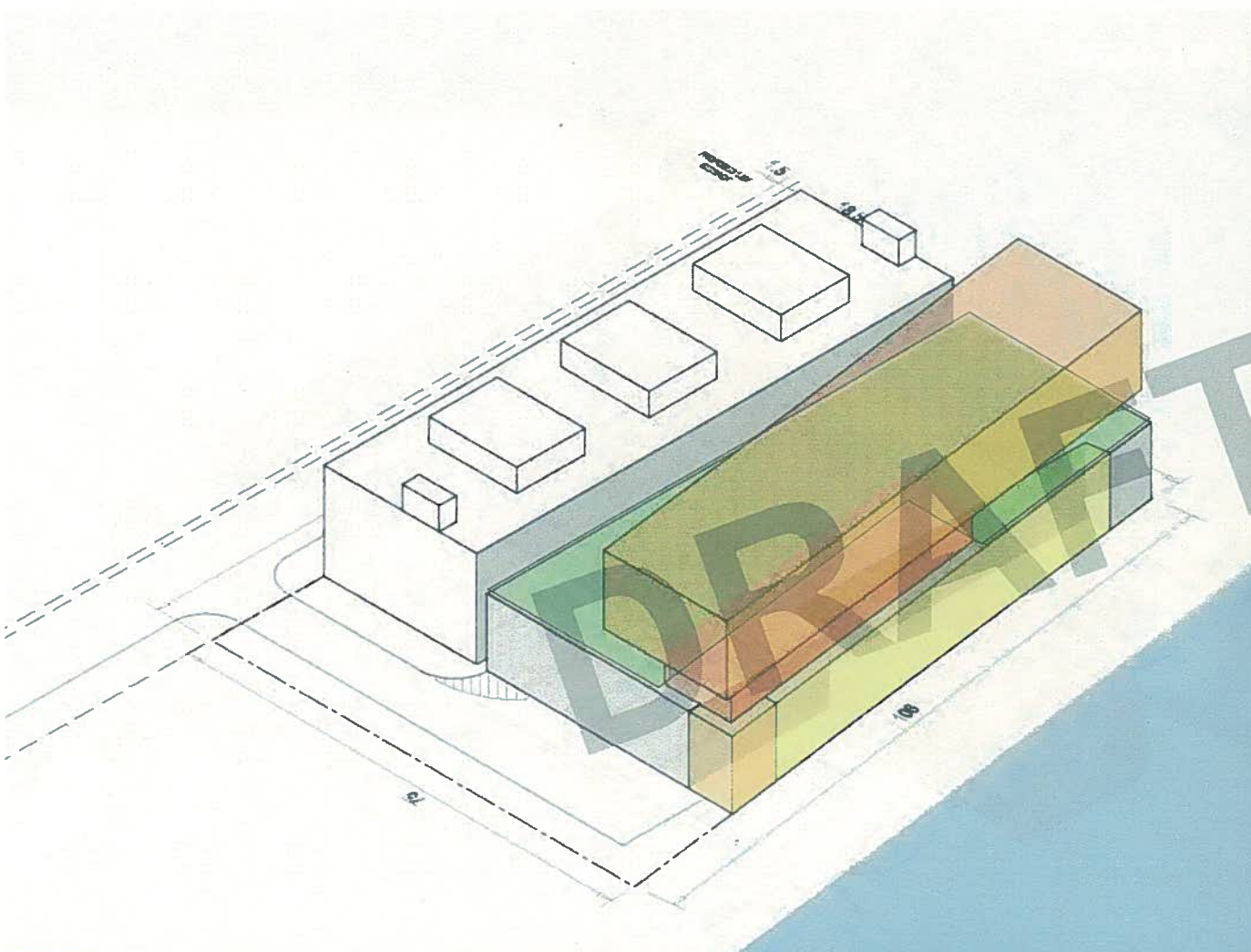


Phase 2 Introduction of Outdoor Amenity Area

NOTE:
Current SPA application focuses on Phase 1 only.

new facility future focused



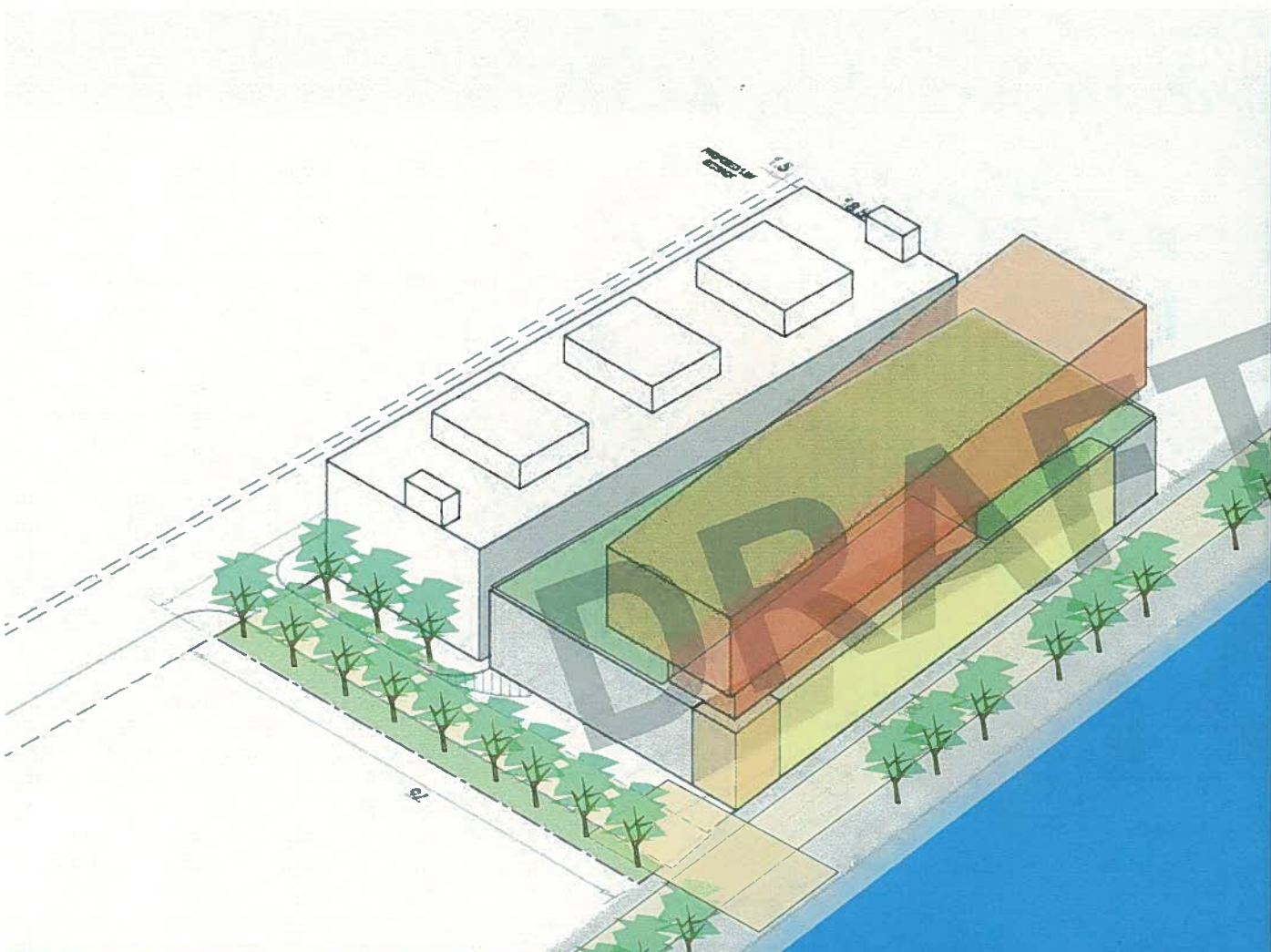


Phase 2 Introduction of
Additional Production Facility
Office Levels

NOTE:
Current SPA application focuses
on Phase 1 only.

new facility future focused





Phase 2 Future Ship Channel Promenade

NOTE:
Current SPA application focuses on Phase 1 only.

new facility future focused



TORONTO STUDIOS



new facility future focused





new facility future focused



TORONTO STUDIOS