

Virtual Town Hall

Waterfront Toronto

Watch the full presentation here:
<https://www.youtube.com/watch?v=HF4IWRgy9Fk>

DECEMBER 1, 2020



Toronto's waterfront— now more than ever

Part one

TORONTO'S WATERFRONT—NOW MORE THAN EVER



Our story begins with a city by
a lake in the midst of change.



TORONTO'S WATERFRONT—NOW MORE THAN EVER

For decades, industrial lands were
cut off from a rapidly growing city.



TORONTO'S WATERFRONT—NOW MORE THAN EVER

By 2001, the waterfront is
the last expanse of underused
land in our city.

 Waterfront Design Review District
 Designated Waterfront Area



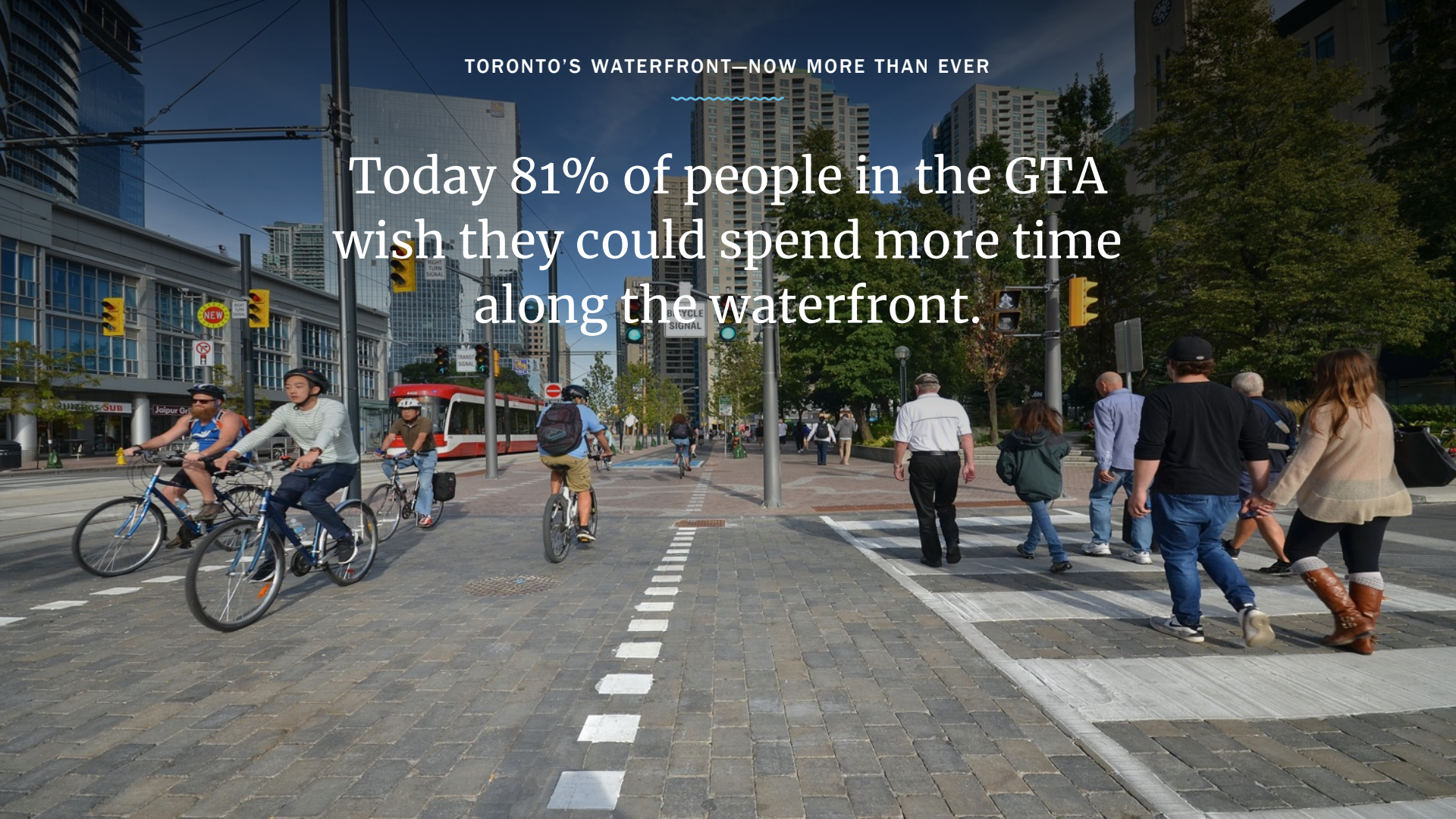
TORONTO'S WATERFRONT—NOW MORE THAN EVER

Waterfront Toronto is created out
of a need to take action and
realize the city's full potential.



TORONTO'S WATERFRONT—NOW MORE THAN EVER

Today 81% of people in the GTA
wish they could spend more time
along the waterfront.



20 years ago





Today



What Waterfront Toronto stands for

Part two

WHAT WATERFRONT TORONTO STANDS FOR

Be relentlessly collaborative




WHAT WATERFRONT TORONTO STANDS FOR



Always demand better



An aerial photograph of a waterfront park in Toronto. The park features a large green lawn, a modern building with a curved roof, and a swimming pool. A road with a crosswalk and a parking lot are visible in the foreground. The background shows a dense forest and a railway line.

WHAT WATERFRONT TORONTO STANDS FOR

Unpack the big issues

The challenges we face

Part three

WHAT WATERFRONT TORONTO STANDS FOR

Inclusive



WHAT WATERFRONT TORONTO STANDS FOR



Resilient



WHAT WATERFRONT TORONTO STANDS FOR



Dynamic



Where we go from here

Part four

WHERE WE GO FROM HERE



Transform the Port Lands

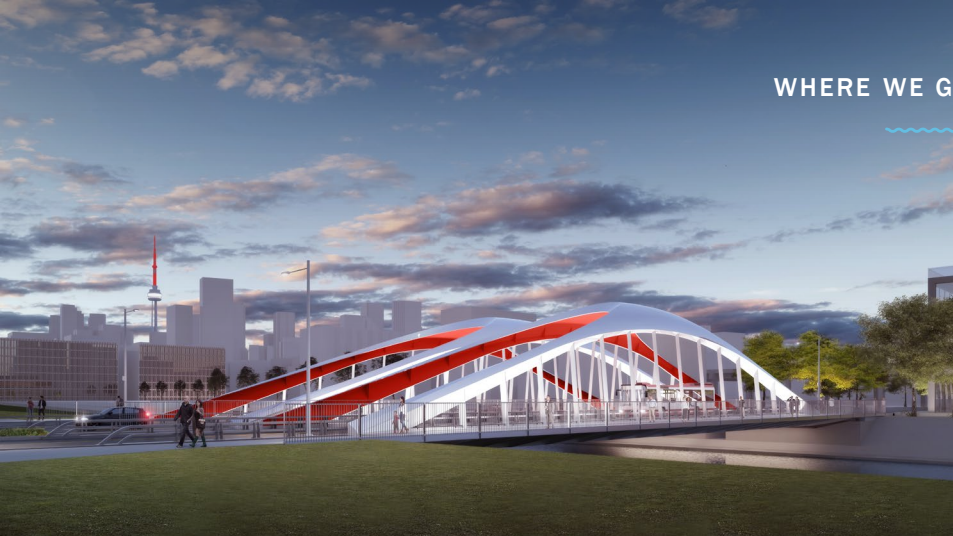


WHERE WE GO FROM HERE

Develop the first climate
positive neighbourhood




WHERE WE GO FROM HERE



WHERE WE GO FROM HERE

Connect a vibrant and
walkable waterfront

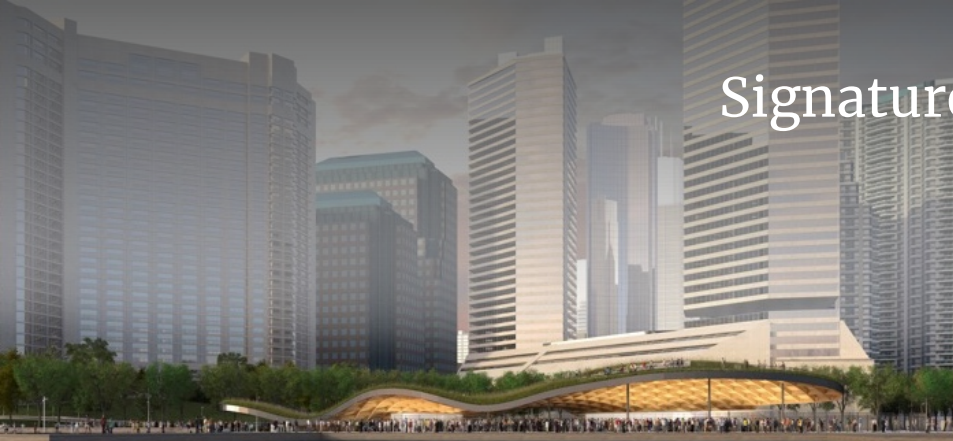


An aerial photograph of a city waterfront. In the foreground, a marina is filled with numerous sailboats and yachts. To the left, a park area with green trees and a paved walkway is visible. In the background, several tall apartment buildings and a highway interchange are seen. The text 'WHERE WE GO FROM HERE' is centered at the top, with a blue wavy line underneath it.

WHERE WE GO FROM HERE

Build stronger connections
to the water

Signature Projects



JACK LAYTON FERRY TERMINAL



MAGGIE DALEY PARK, CHICAGO



NETWORK OF PEDESTRIAN BRIDGES



SYDNEY OPERA HOUSE

WHERE WE GO FROM HERE



We are hard at work creating
a waterfront that belongs to everyone.

